



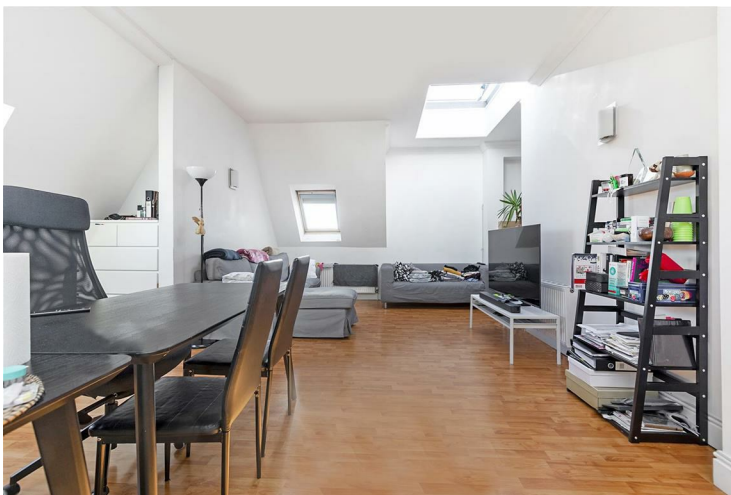
St Michaels Court Borough

£3,650 PCM

Leonard Leese are pleased to market this superb three double bedroom property in St Michaels Court. Situated in secure gated development nestled moments from London Bridge, Borough Market and South Bank, the apartment boasts 1100 sq ft of living space split over two levels.

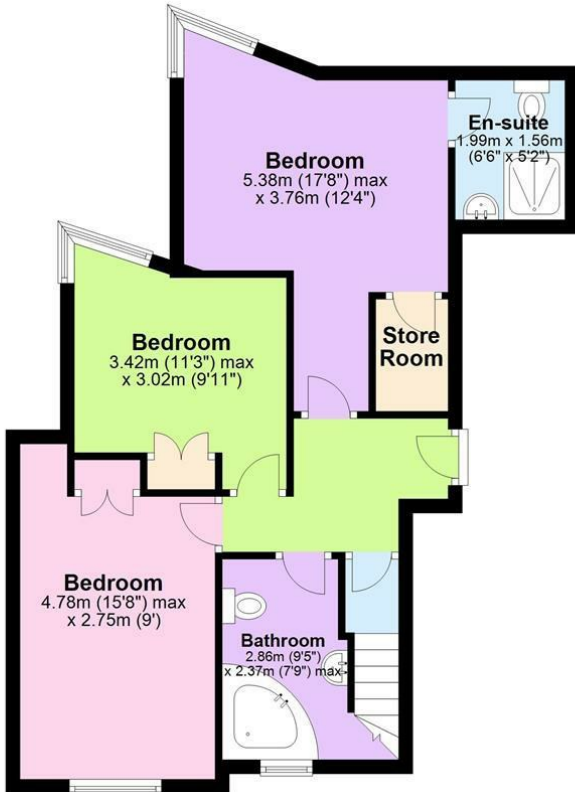
Gated off street parking is available with this apartment along with lift access and bike storage. The closest stations are Borough (Northern Line) or London Bridge (Mainline / Northern / Jubilee) and the Square Mile is located a pleasant walk over London Bridge..

Call the lettings department to reserve a viewing 0207 015 1360



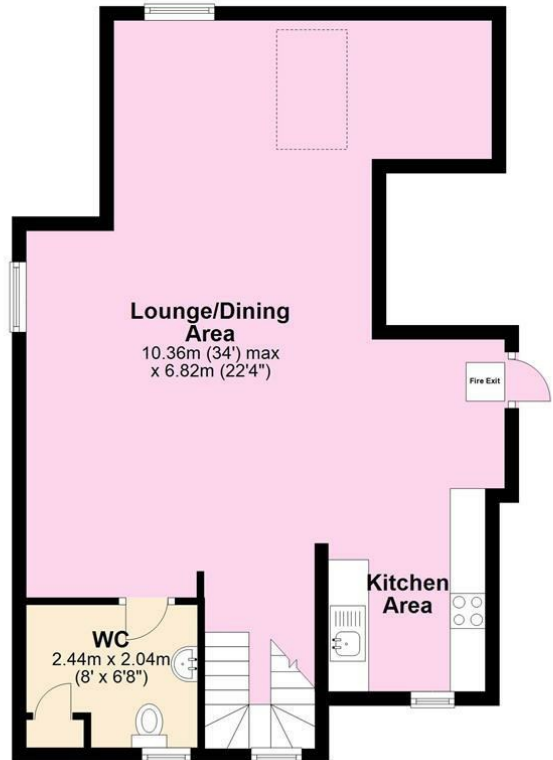
Third Floor

Approx. 52.3 sq. metres (562.9 sq. feet)



Fourth Floor

Approx. 58.7 sq. metres (631.9 sq. feet)



Total area: approx. 111.0 sq. metres (1194.8 sq. feet)

Whilst every attempt has been made to ensure the accuracy of the floor plan contained here, the measurements of doors, windows, rooms and any other items are approximate and no responsibility is taken for error, omission or representation. The floor plan is for illustrative purposes only and should be used as such by any prospective Purchaser.

Flat 12 St. Michaels Court, 3 Hulme Place, London



Energy Efficiency Rating		Current	Potential
Very energy efficient - lower running costs			
(92 plus)	A		
(81-91)	B		
(69-80)	C		
(55-68)	D		
(39-54)	E		
(21-38)	F		
(1-20)	G		
Not energy efficient - higher running costs			
England & Wales		EU Directive 2002/91/EC	

Agents Note: Whilst every care has been taken to prepare these particulars, they are for guidance purposes only. All measurements are approximate and are for general guidance purposes only and whilst every care has been taken to ensure their accuracy, they should not be relied upon and potential buyers/tenants are advised to recheck the measurements

Borough Lettings
230 Borough High Street
London
SE1 1JX

020 7015 1360
enquiries@leonardleese.com
www.leonardleese.com

