

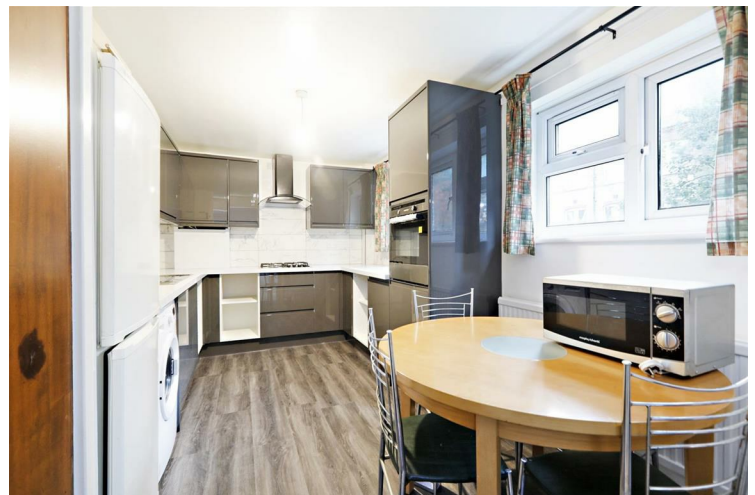


86 Rockingham Street London

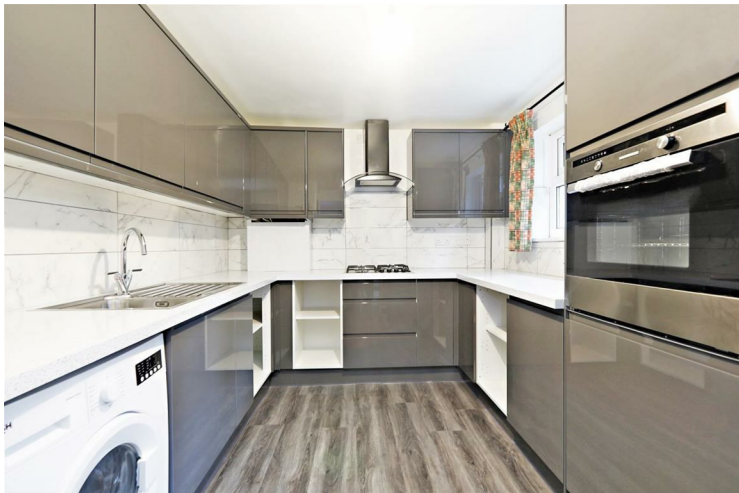
£2,300 Per

This large two bedroom apartment on Rockingham St SE1 - located near Elephant & Castle and Borough tube/high street. The property is set on the first floor and comprises two double bedrooms, a bright/spacious living room, a modern kitchen and a modern bathroom. The property is offered furnished.

Call the lettings department to reserve a viewing on 0207 015 1360.



- Two Double Bedrooms • Furnished • Superb Location • First Floor • Council Tax - Band C (£1,417 p/yr)







Energy Efficiency Rating		
	Current	Potential
Very energy efficient - lower running costs		
(92 plus) A		
(81-91) B		
(69-80) C		
(55-68) D		
(39-54) E		
(21-38) F		
(1-20) G		
Not energy efficient - higher running costs		
England & Wales	EU Directive 2002/91/EC	

Agents Note: Whilst every care has been taken to prepare these particulars, they are for guidance purposes only. All measurements are approximate and are for general guidance purposes only and whilst every care has been taken to ensure their accuracy, they should not be relied upon and potential buyers/tenants are advised to recheck the measurements

Borough Lettings
230 Borough High Street
London
SE1 1JX

020 7015 1360
enquiries@leonardleese.com
www.leonardleese.com

