



Black Prince Road SE11

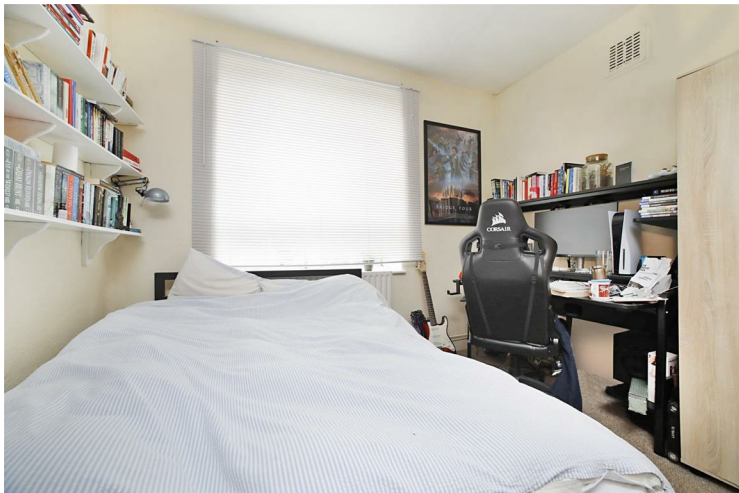
£2,200 PCM

LEONARD LEESE are pleased to announce the instruction of this beautifully presented two double bedroom apartment located moments from the river in the highly desirable SE11 area. The property is very well proportioned, comprising two double bedrooms, a large lounge, a fully fitted kitchen and bathroom. The apartment is situated on the 2nd floor of a small pleasant block and offered furnished. The apartment is well placed for easy access to Waterloo, Lambeth and Vauxhall tube stations.

Call the lettings department to reserve a viewing on 0207 015 1360.




- Two Bedroom Apartment • Available 3rd November • Great Location • Superb Location • Furnished







Energy Efficiency Rating		
	Current	Potential
Very energy efficient - lower running costs		
(92 plus) A		
(81-91) B		
(69-80) C		
(55-68) D		
(39-54) E		
(21-38) F		
(1-20) G		
Not energy efficient - higher running costs		
England & Wales		EU Directive 2002/91/EC 

Agents Note: Whilst every care has been taken to prepare these particulars, they are for guidance purposes only. All measurements are approximate and are for general guidance purposes only and whilst every care has been taken to ensure their accuracy, they should not be relied upon and potential buyers/tenants are advised to recheck the measurements

Borough Lettings
230 Borough High Street
London
SE1 1JX

020 7015 1360
enquiries@leonardleese.com
www.leonardleese.com

