



## 25 Joseph Hardcastle Close London

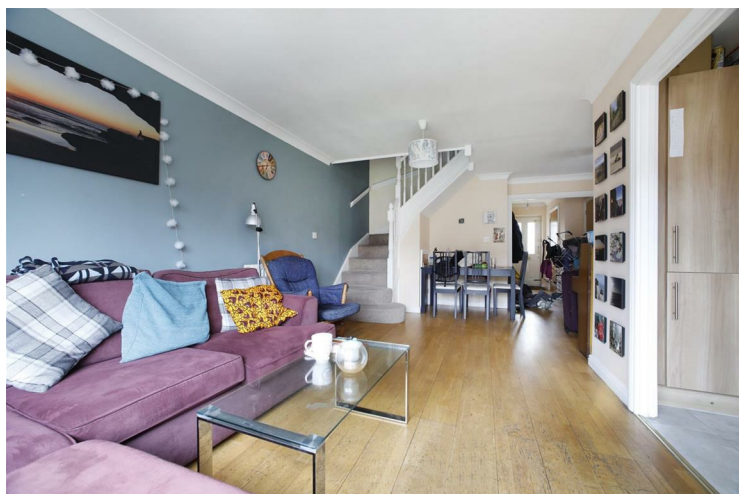
£3,800 PCM

Leonard Leese are very pleased to offer the rental market this superb 4 bedroom house, within walking distance to New Cross Gate & Brockley Train Station.

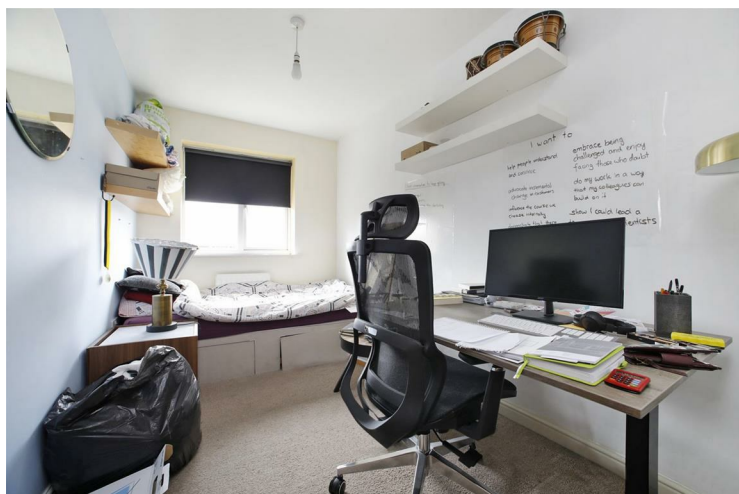
The ground floor of this lovely home offers a separate reception room, downstairs WC, kitchen with appliances and a double bedroom with en suite.

Floorplan available upon request!

Call the lettings department to reserve a viewing.




- Four Bedrooms • Walk In Wardrobe • Off Street Parking • Large Garden • Council Tax - Band D (£1,816 p/yr) • Three Bathrooms, Four Toilets









Energy Efficiency Rating		
	Current	Potential
Very energy efficient - lower running costs		
(92 plus) <b>A</b>		
(81-91) <b>B</b>		
(69-80) <b>C</b>		
(55-68) <b>D</b>		
(39-54) <b>E</b>		
(21-38) <b>F</b>		
(1-20) <b>G</b>		
Not energy efficient - higher running costs		
<b>England &amp; Wales</b>	EU Directive 2002/91/EC 	

Agents Note: Whilst every care has been taken to prepare these particulars, they are for guidance purposes only. All measurements are approximate and are for general guidance purposes only and whilst every care has been taken to ensure their accuracy, they should not be relied upon and potential buyers/tenants are advised to recheck the measurements

Borough Lettings  
230 Borough High Street  
London  
SE1 1JX

020 7015 1360  
enquiries@leonardleese.com  
www.leonardleese.com

