

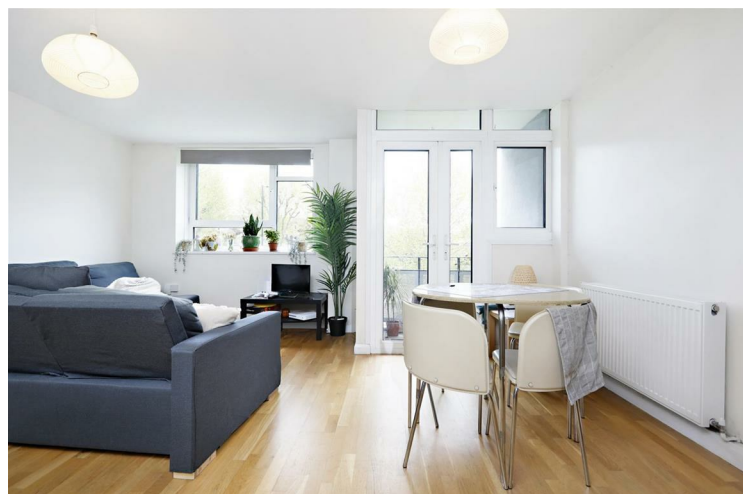


## Barlow House Rennie Estate

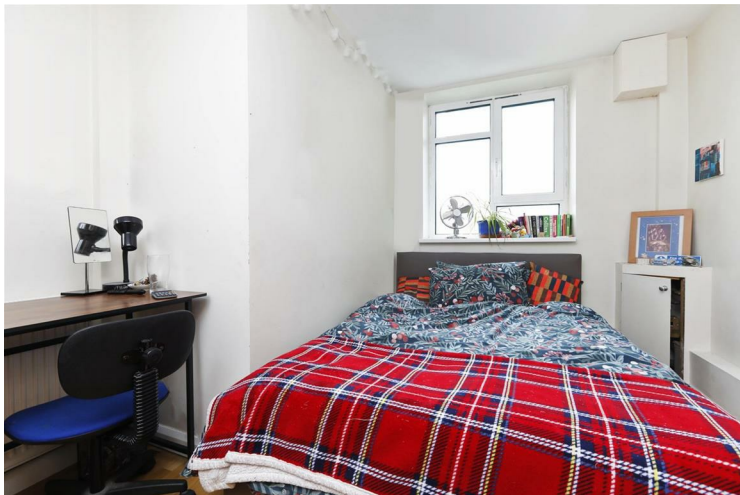
**£3,800 PCM**

A superb four double bedroom property perfect for sharers. Split over two levels, the property comprises a large open plan living room kitchen leading to a private balcony, four double bedrooms all fully furnished, one bathroom and a separate W/C. Available to view immediately.

Call the lettings department to reserve a viewing 0207 015 1360.



- NO TENANT FEE'S • \* 0% DEPOSIT Subject to Landlord Approval • Four Double Bedrooms • Split Level • Large Living Room • Furnished • Great Location







| Energy Efficiency Rating                    |                            |           |
|---|----------------------------|-----------|
|   | Current                    | Potential |
| Very energy efficient - lower running costs |                            |           |
| (92 plus) <b>A</b>                          |                            |           |
| (81-91) <b>B</b>                            |                            |           |
| (69-80) <b>C</b>                            |                            |           |
| (55-68) <b>D</b>                            |                            |           |
| (39-54) <b>E</b>                            |                            |           |
| (21-38) <b>F</b>                            |                            |           |
| (1-20) <b>G</b>                             |                            |           |
| Not energy efficient - higher running costs |                            |           |
| <b>England &amp; Wales</b>                  | EU Directive<br>2002/91/EC |           |

Agents Note: Whilst every care has been taken to prepare these particulars, they are for guidance purposes only. All measurements are approximate and are for general guidance purposes only and whilst every care has been taken to ensure their accuracy, they should not be relied upon and potential buyers/tenants are advised to recheck the measurements

Borough Lettings  
230 Borough High Street  
London  
SE1 1JX

020 7015 1360  
enquiries@leonardleese.com  
www.leonardleese.com

