

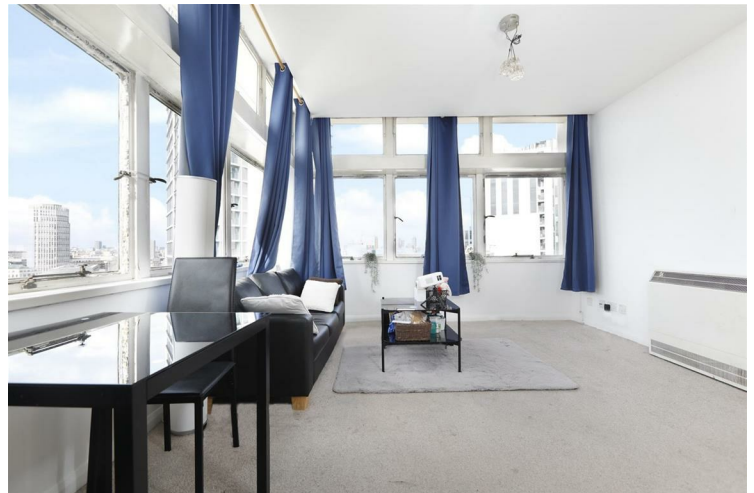


## Metro Central Heights North Block

**£325,000**  
**LEASEHOLD**

One bedroom apartment within the popular Metro Central Heights development in Elephant and Castle SE1. The property is a corner plot, set on the 13th floor of the North Block with stunning views of the City and comprises a spacious bedroom with built in storage, a bright/spacious open plan kitchen/living room and a modern bathroom. The development benefits from a 24 hour concierge, gym and swimming pool.

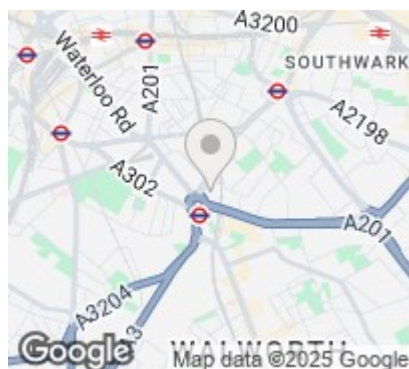
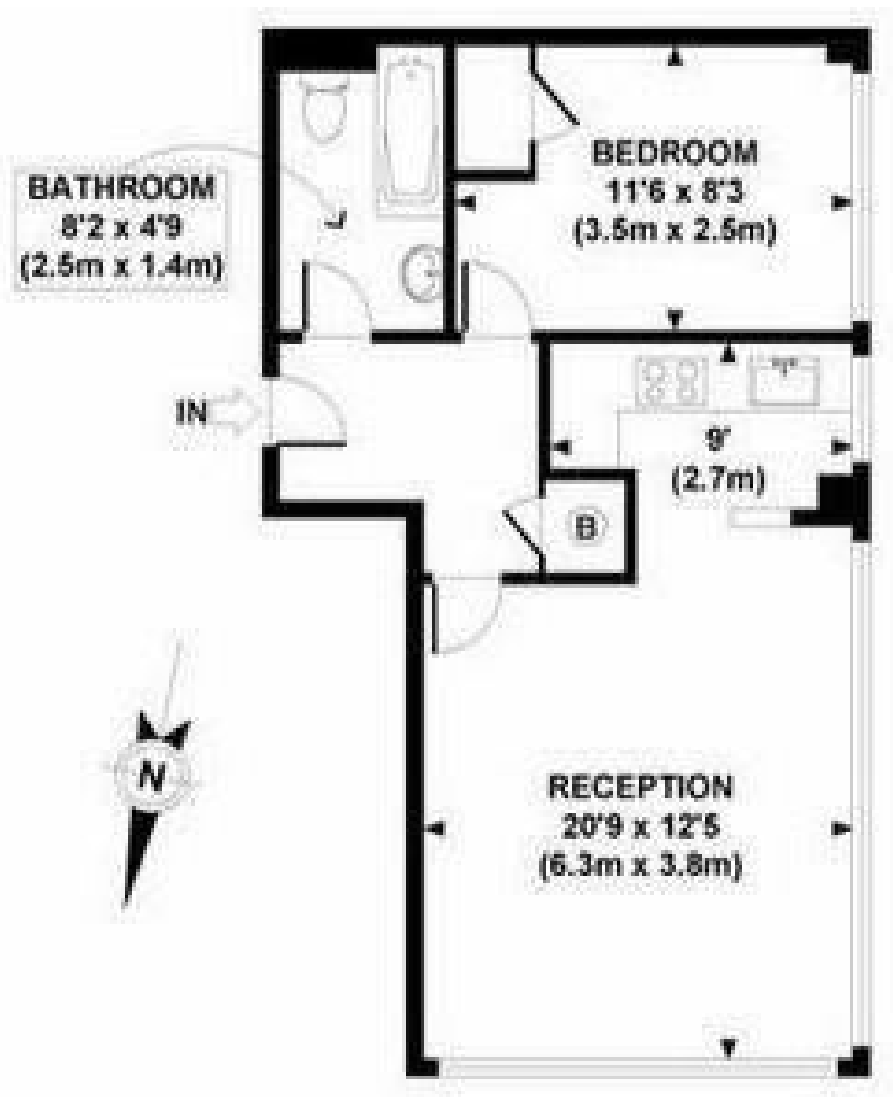
Call the Sales Department to reserve a viewing on 0207 015 1360.



- One Bedroom Apartment • 13th Floor • Metro Central Heights • 24 Hour Concierge • Gym + Swimming Pool • Superb Location







Energy Efficiency Rating		
	Current	Potential
Very energy efficient - lower running costs		
(92-plus) A		
(81-91) B		
(69-80) C	69	75
(55-68) D		
(39-54) E		
(21-38) F		
(1-20) G		
Not energy efficient - higher running costs		
England & Wales		EU Directive 2002/91/EC

Agents Note: Whilst every care has been taken to prepare these particulars, they are for guidance purposes only. All measurements are approximate and are for general guidance purposes only and whilst every care has been taken to ensure their accuracy, they should not be relied upon and potential buyers/tenants are advised to recheck the measurements

Borough Lettings  
230 Borough High Street  
London  
SE1 1JX

020 7015 1360  
enquiries@leonardleese.com  
www.leonardleese.com

