



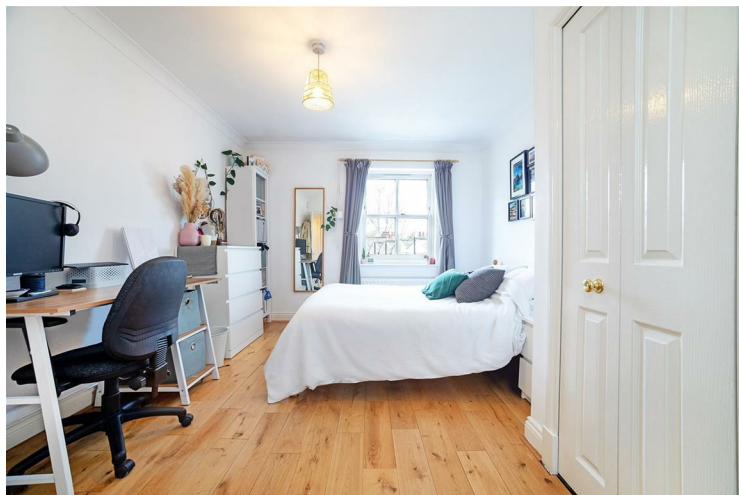
40 Portland Court Borough

£2,600 PCM

Bright and spacious two bedroom apartment set within a popular gated development in Chadwick Square, Borough SE1. This 3rd floor apartment comprises a large reception room with access to private balcony, a modern kitchen, two equally sized double bedrooms and two bathrooms (1 en-suite). The reception room and balcony overlook communal gardens and the apartment is presented in excellent condition throughout. Located very near to Borough tube. Offered furnished.



• Two Bedroom Apartment • Two Bathrooms • Chadwick Square • Furnished • Available
Mid June







Energy Efficiency Rating		
	Current	Potential
Very energy efficient - lower running costs		
(92 plus) A		
(81-91) B		
(69-80) C		
(55-68) D		
(39-54) E		
(21-38) F		
(1-20) G		
Not energy efficient - higher running costs		
	76	84
England & Wales		EU Directive 2002/91/EC

Agents Note: Whilst every care has been taken to prepare these particulars, they are for guidance purposes only. All measurements are approximate and are for general guidance purposes only and whilst every care has been taken to ensure their accuracy, they should not be relied upon and potential buyers/tenants are advised to recheck the measurements

Borough Lettings
230 Borough High Street
London
SE1 1JX

020 7015 1360
enquiries@leonardleese.com
www.leonardleese.com

