



Flat 2a Trinity Street SE1

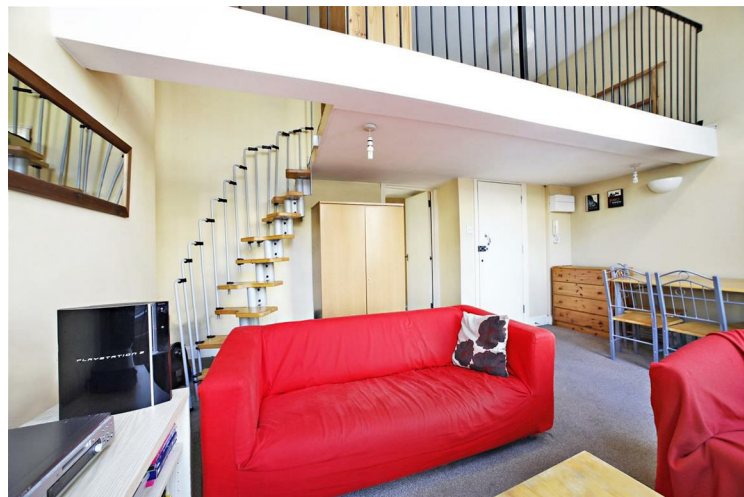
£1,800 PCM

A superbly located one bedroom apartment in the heart of Borough. Set on the first floor of a period building the property consists of a spacious lounge including a mezzanine bedroom, a fully fitted kitchen and a shower room bathroom. The apartment benefits from period features throughout such as high ceilings and large windows. Situated in a superb location, offered furnished and available to view immediately.

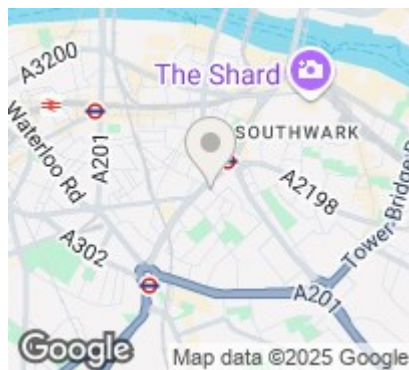
Call the lettings department to reserve a viewing 0207 015 1360.




- One Double Bedroom • Great Location • Furnished • Spacious • Available 5th June







Energy Efficiency Rating		
	Current	Potential
Very energy efficient - lower running costs		
(92 plus) A		
(81-91) B		
(69-80) C		
(55-68) D		
(39-54) E		
(21-38) F		
(1-20) G		
Not energy efficient - higher running costs		
England & Wales		EU Directive 2002/91/EC 

Agents Note: Whilst every care has been taken to prepare these particulars, they are for guidance purposes only. All measurements are approximate and are for general guidance purposes only and whilst every care has been taken to ensure their accuracy, they should not be relied upon and potential buyers/tenants are advised to recheck the measurements

Borough Lettings
230 Borough High Street
London
SE1 1JX

020 7015 1360
enquiries@leonardleese.com
www.leonardleese.com

