



**Lant Street**

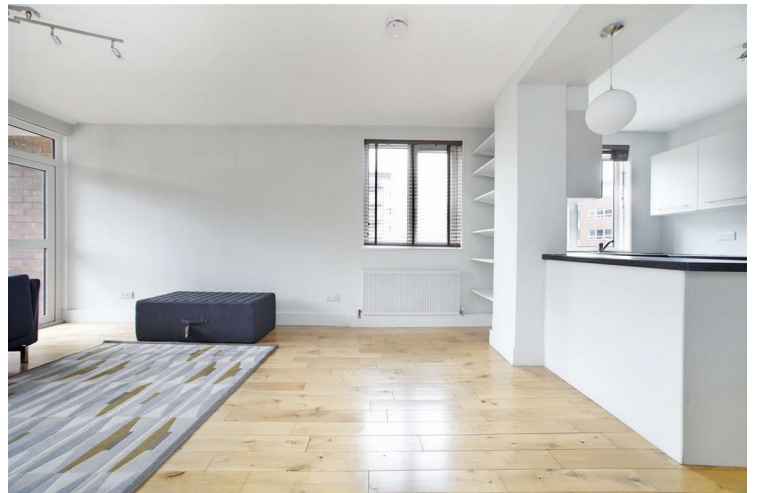
**£1,900 PCM**

Leonard Leese present this stunning one bedroom apartment located on Lant Street, Borough SE1. The property comprises one double bedroom, a separate reception room with a semi open plan modern kitchen, private balcony and a modern bathroom. Offered furnished, this property is a must see!

Call the lettings department to reserve a viewing 0207 015 1360.




- One Bedroom Apartment • Furnished • Great Location • Secure Fob Entry • Close to Borough Tube







Energy Efficiency Rating		
	Current	Potential
Very energy efficient - lower running costs		
(92 plus) A		
(81-91) B		
(69-80) C		
(55-68) D		
(39-54) E		
(21-38) F		
(1-20) G		
Not energy efficient - higher running costs		
England & Wales		EU Directive 2002/91/EC 

Agents Note: Whilst every care has been taken to prepare these particulars, they are for guidance purposes only. All measurements are approximate and are for general guidance purposes only and whilst every care has been taken to ensure their accuracy, they should not be relied upon and potential buyers/tenants are advised to recheck the measurements

Borough Lettings  
230 Borough High Street  
London  
SE1 1JX

020 7015 1360  
enquiries@leonardleese.com  
www.leonardleese.com

