



46 The Paragon London

£2,500 PCM

A superb Victorian situated in The Paragon development on Searles Road, close to Borough, Elephant and Castle and an easy walk to London Bridge and the City. The Paragon is a beautiful gated development with a great community feel.

The house is split over two levels with two double bedrooms and a bathroom, along with an open plan kitchen and living area with a down stairs W/C downstairs.

This is offered furnished or unfurnished.

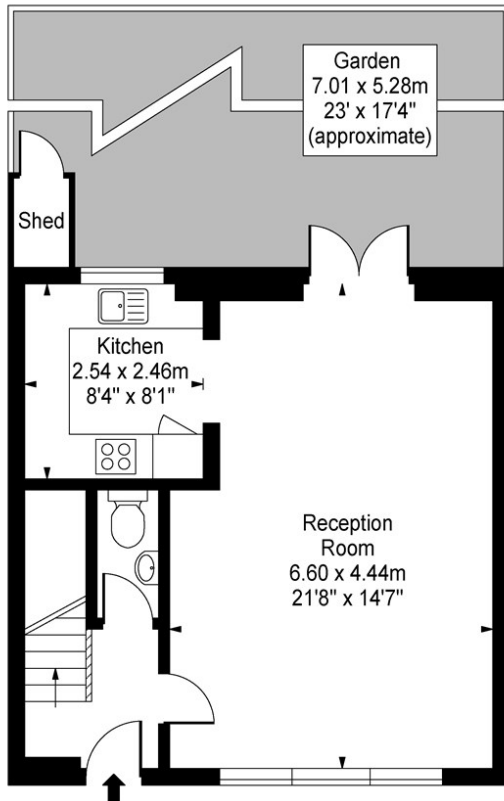
Call the lettings department to reserve a viewing 0207 015 1360.



- Two Double Bedroom • Available 18th June • 862 sq ft • Furnished or Unfurnished • Private Garden

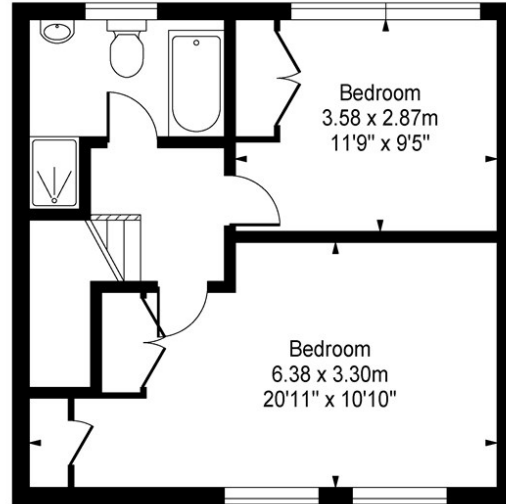






Ground Floor

Searles Road, SE1



First Floor

Approx Gross Internal Area 862 Sq Ft - 80.08 Sq M

This floor plan should be used as a general outline for guidance only and does not constitute in whole or in part an offer or contract. Any intending purchaser or lessee should satisfy themselves by inspection, searches, enquiries and full survey as to the correctness of each statement. Any areas, measurements or distances quoted are approximate and should not be used to value a property or be the basis of any sale or let.



Energy Efficiency Rating		
	Current	Potential
Very energy efficient - lower running costs		
(92 plus) A		
(81-91) B		
(69-80) C		
(55-68) D		
(39-54) E		
(21-38) F		
(1-20) G		
Not energy efficient - higher running costs		
England & Wales		EU Directive 2002/91/EC

Agents Note: Whilst every care has been taken to prepare these particulars, they are for guidance purposes only. All measurements are approximate and are for general guidance purposes only and whilst every care has been taken to ensure their accuracy, they should not be relied upon and potential buyers/tenants are advised to recheck the measurements

Borough Lettings
230 Borough High Street
London
SE1 1JX

020 7015 1360
enquiries@leonardleese.com
www.leonardleese.com

