

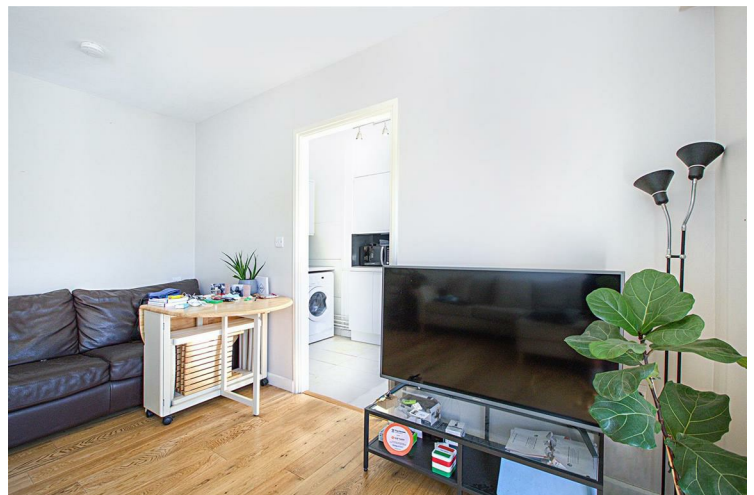


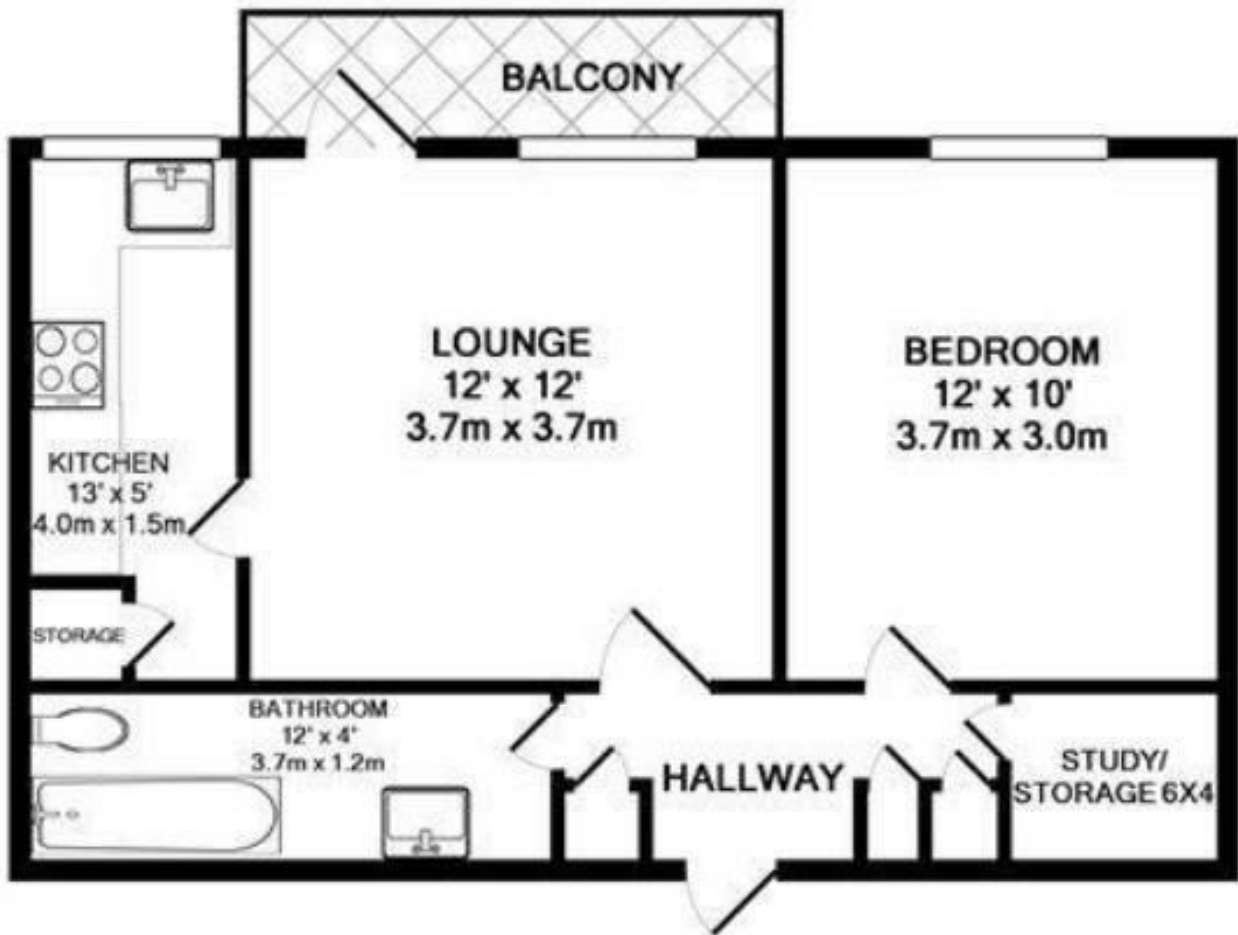
**124 Great Dover Street  
SE1**

**£400,000  
LEASEHOLD**

Superb one double bedroom apartment in the heart of SE1. Situated on Great Dover St and within a five minute walk to Borough tube station, this property is an absolute must see! Comprising of a large semi open plan kitchen living room leading to a private balcony, a good size double bedroom with ample storage space and a modern bathroom.

Call the sales department to reserve a viewing 0207 015 1360.





Energy Efficiency Rating		
	Current	Potential
Very energy efficient - lower running costs		
(92 plus) A		
(81-91) B		
(69-80) C	71	71
(55-68) D		
(39-54) E		
(21-38) F		
(1-20) G		
Not energy efficient - higher running costs		
England & Wales	EU Directive 2002/91/EC	

Agents Note: Whilst every care has been taken to prepare these particulars, they are for guidance purposes only. All measurements are approximate and are for general guidance purposes only and whilst every care has been taken to ensure their accuracy, they should not be relied upon and potential buyers/tenants are advised to recheck the measurements

**Borough Lettings**  
230 Borough High Street  
London  
SE1 1JX

020 7015 1360  
enquiries@leonardleese.com  
www.leonardleese.com

