



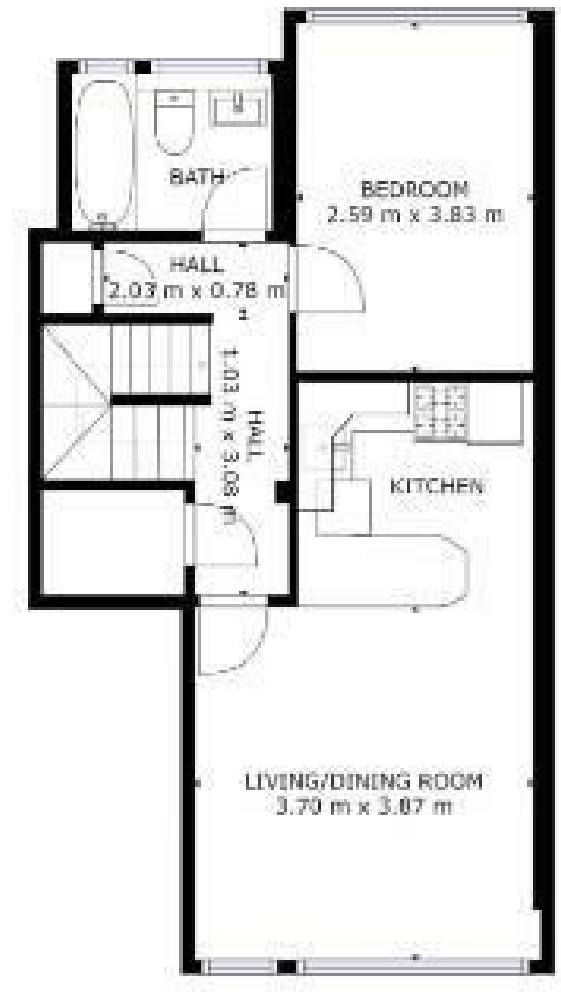
Flat 21, 80, Lambeth Towers Kennington Road


£350,000
LEASEHOLD

Leonard Leese are pleased to present this bright and spacious apartment located close to Lambeth North underground station. The apartment provides the best views in London and an abundance of natural light! Recently renovated to a high standard with modern interiors, updated kitchen and bathroom - this really is a turnkey opportunity!

Comprising of a spacious living room/kitchen including windows spanning the full width of the room providing unobstructed views of London, a equally spacious double bedroom with ample storage space and a modern family sized bathroom. Residents further enjoy access to a communal garden and on-site parking is also available subject to application and availability.





Energy Efficiency Rating		
	Current	Potential
Very energy efficient - lower running costs		
(92 plus) A	62	76
(81-91) B		
(69-80) C		
(55-68) D		
(39-54) E		
(21-38) F		
(1-20) G		
Not energy efficient - higher running costs		
England & Wales		EU Directive 2002/91/EC 

Agents Note: Whilst every care has been taken to prepare these particulars, they are for guidance purposes only. All measurements are approximate and are for general guidance purposes only and whilst every care has been taken to ensure their accuracy, they should not be relied upon and potential buyers/tenants are advised to recheck the measurements

Borough Sales
230 Borough High Street
London
SE1 1JX

020 7015 1360
enquiries@leonardleese.com
www.leonardleese.com

