



97 Park Street London

£475,000
LEASEHOLD

A superbly located first floor flat with a recently replaced modern kitchen, a large living room, with ample room for a dining table, a private balcony and ample storage . Permit parking is available.

Park Street is set in the heart of SE1, just off Bankside, one street back from the River Thames, with Borough Market and London Bridge on one side and the Tate Modern and Globe Theatre on the other.

Call the Sales department to reserve a viewing 0207 0151 360.

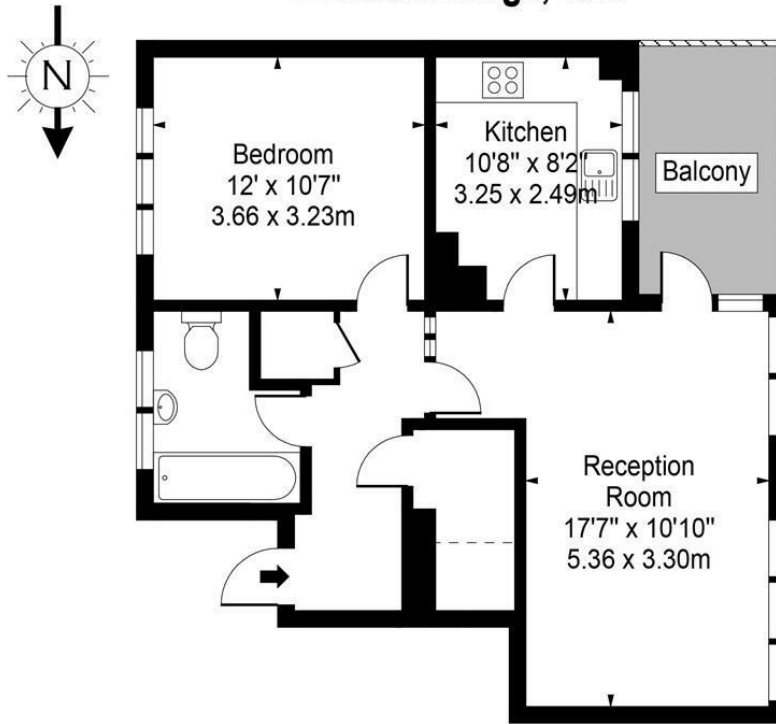


- Large One Bed Apartment • Great Location • 1st Floor • Over 600 St Ft • Private Balcony • Council Tax - Band C





Park Street. London Bridge, SE1



First Floor

Approx Gross Internal Area 610 Sq Ft - 56.67 Sq M

This floor plan should be used as a general outline for guidance only. Any intending purchaser or lessee should satisfy themselves by inspection, searches, enquiries and full survey as to the correctness of each statement. Any areas, measurements or distances quoted are approximate and should not be used to value a property or be the basis of any sale or let.



Energy Efficiency Rating		
	Current	Potential
Very energy efficient - lower running costs		
(92 plus) A		
(81-91) B	77	79
(69-80) C		
(55-68) D		
(39-54) E		
(21-38) F		
(1-20) G		
Not energy efficient - higher running costs		
England & Wales		EU Directive 2002/91/EC

Agents Note: Whilst every care has been taken to prepare these particulars, they are for guidance purposes only. All measurements are approximate and are for general guidance purposes only and whilst every care has been taken to ensure their accuracy, they should not be relied upon and potential buyers/tenants are advised to recheck the measurements

Borough Sales
230 Borough High Street
London
SE1 1JX

020 7015 1360
enquiries@leonardleese.com
www.leonardleese.com

