



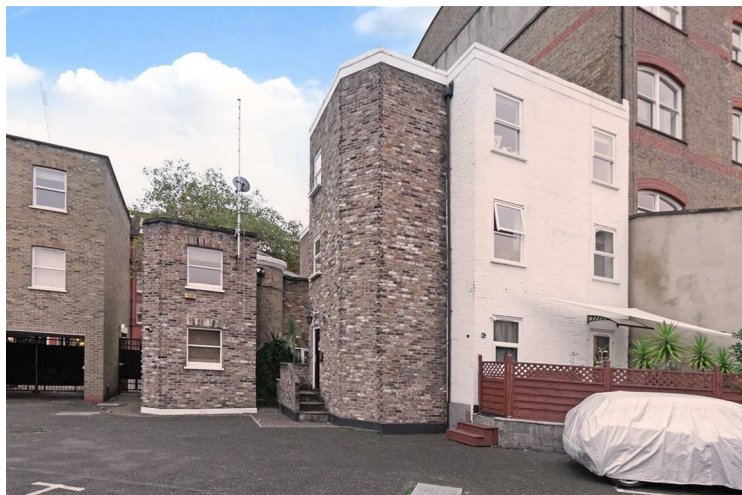
2 Freestone Court Borough Road

£625,000

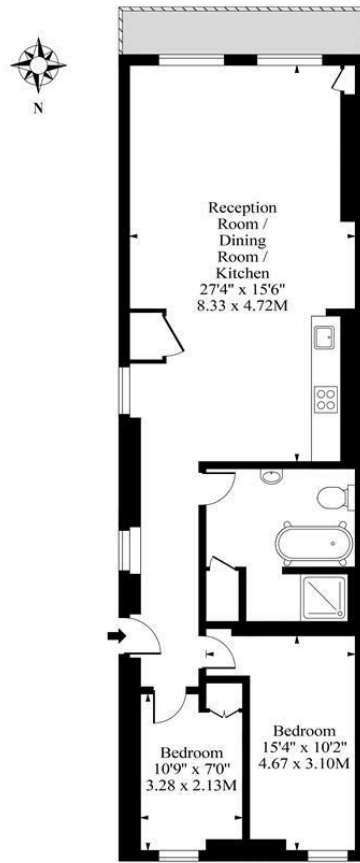
LEASEHOLD -
SHADE OF

A stunning two bedroom apartment set within an attractive Georgian Block in Borough/Southwark SE1. Presented in excellent condition with modern fittings throughout and comprising a spacious open-plan living room/kitchen, two double bedrooms and a modern bathroom including a separate shower.

Call the sales department to reserve a viewing on 0207 015 1360.



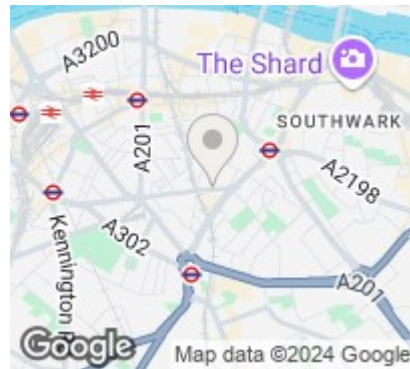
Freestone Court, Borough Road Borough, SE1



First Floor

Approx Gross Internal Area 827 Sq Ft - 76.83 Sq M

Measured in accordance with RICS guidelines. Every attempt is made to ensure accuracy
However all measurements are approximate.
The floor plan is illustrative purposes only and is not to scale



| Energy Efficiency Rating | | |
|---|-------------------------|-----------|
| | Current | Potential |
| Very energy efficient - lower running costs | | |
| (92 plus) A | | |
| (81-91) B | | |
| (69-80) C | | |
| (55-68) D | | |
| (39-54) E | | |
| (21-38) F | | |
| (1-20) G | | |
| Not energy efficient - higher running costs | | |
| England & Wales | EU Directive 2002/91/EC | |

Agents Note: Whilst every care has been taken to prepare these particulars, they are for guidance purposes only. All measurements are approximate and are for general guidance purposes only and whilst every care has been taken to ensure their accuracy, they should not be relied upon and potential buyers/tenants are advised to recheck the measurements

Borough Lettings
230 Borough High Street
London
SE1 1JX

020 7015 1360
enquiries@leonardleese.com
www.leonardleese.com

