



## Ifield House Elephant & Castle

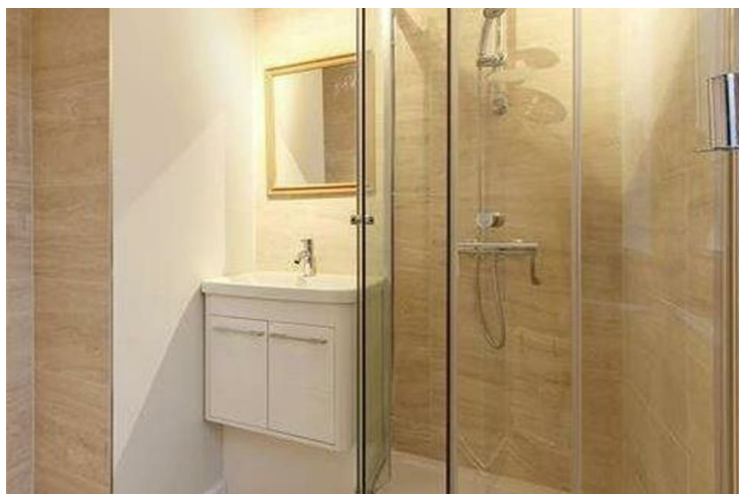
£2,700 PCM

Well presented three bedroom apartment. The property is split over two levels and comprises three bedrooms, an eat-in kitchen, separate reception room and a modern bathroom. Offered furnished.

Call the lettings department to reserve a viewing 0207 015 1360.

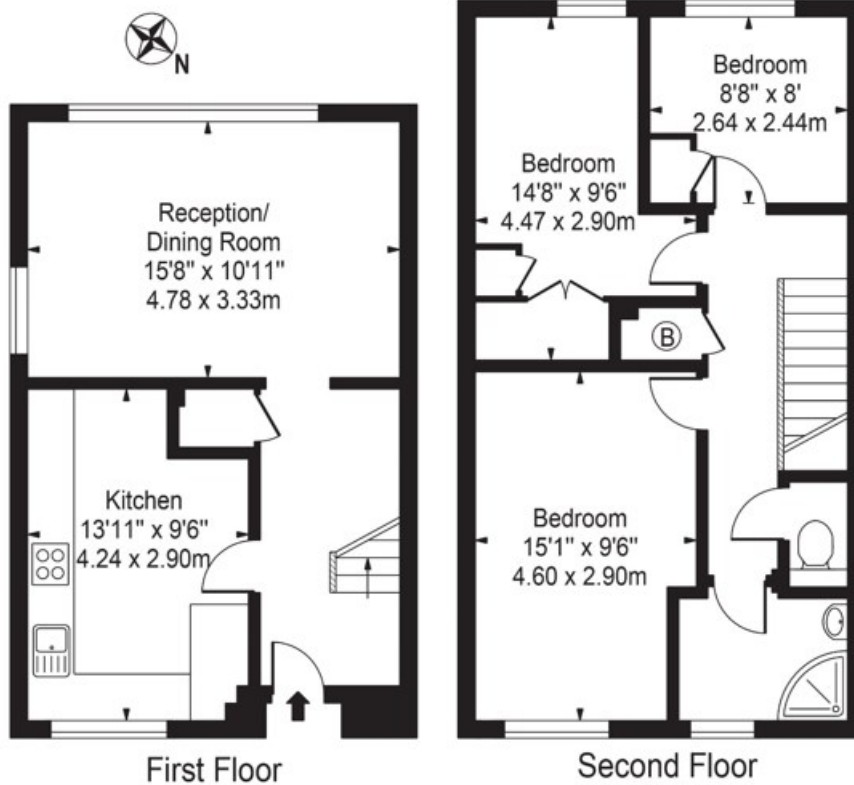


• Three Bedroom Apartment • Ifield House SE17 • Split Level • Furnished • Available 1st November





**Ifield House,  
Madron Street, SE17 2LS**  
Approx. Gross Internal Area 885 Sq Ft - 82.22 Sq M



For Illustration Purposes Only - Not To Scale - Floor Plan by interDesign Photography  
www.interdesignphotography.com  
This floor plan should be used as general outline for guidance only.  
All measurements are approximate and for illustration purposes only as defined by the RICS Code of Measuring Practice ©2016.



Energy Efficiency Rating		
	Current	Potential
<i>Very energy efficient - lower running costs</i>		
(92 plus) <b>A</b>		
(81-91) <b>B</b>		
(69-80) <b>C</b>		
(55-68) <b>D</b>		
(39-54) <b>E</b>		
(21-38) <b>F</b>		
(1-20) <b>G</b>		
<i>Not energy efficient - higher running costs</i>		
<b>England &amp; Wales</b>	EU Directive 2002/91/EC	

Agents Note: Whilst every care has been taken to prepare these particulars, they are for guidance purposes only. All measurements are approximate and are for general guidance purposes only and whilst every care has been taken to ensure their accuracy, they should not be relied upon and potential buyers/tenants are advised to recheck the measurements

Borough Lettings  
230 Borough High Street  
London  
SE1 1JX

020 7015 1360  
enquiries@leonardleese.com  
www.leonardleese.com

