



Great Suffolk Street SE1

£3,250 PCM

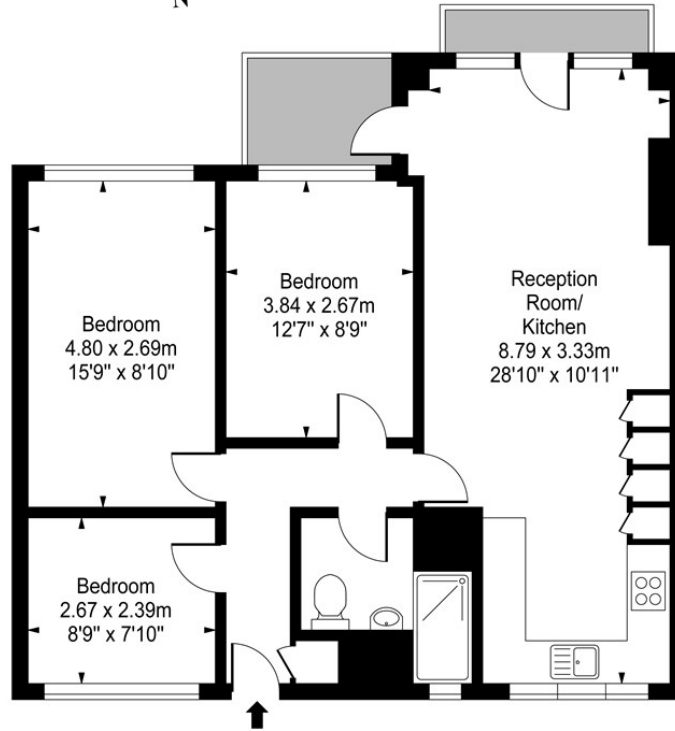
Leonard Leese are pleased to market this stunning three bedroom apartment located on Great Suffolk Street, Borough SE1. The property is set within a popular block, comprising three double bedrooms, a large open plan reception / modern/recently fitted kitchen, a stylish bathroom and a private balcony. The property is located close to great amenities including Borough Market and within easy walking distance to either Borough, London Bridge, Southwark and/or Waterloo stations.

Call the lettings department to reserve a viewing 0207 015 1360.





Collinson Walk SE1



Third Floor

Approx Gross Internal Area

776 Sq Ft - 72.11 Sq M

Measured in accordance with RICS guidelines. Every attempt is made to ensure accuracy
However all measurements are approximate.
The floor plan is illustrative purposes only and is not to scale



Energy Efficiency Rating		
	Current	Potential
Very energy efficient - lower running costs		
(92 plus) A		
(81-91) B		
(69-80) C		
(55-68) D		
(39-54) E		
(21-38) F		
(1-20) G		
Not energy efficient - higher running costs		
England & Wales	EU Directive 2002/91/EC	

Agents Note: Whilst every care has been taken to prepare these particulars, they are for guidance purposes only. All measurements are approximate and are for general guidance purposes only and whilst every care has been taken to ensure their accuracy, they should not be relied upon and potential buyers/tenants are advised to recheck the measurements

Borough Lettings
230 Borough High Street
London
SE1 1JX

020 7015 1360
enquiries@leonardleese.com
www.leonardleese.com

