



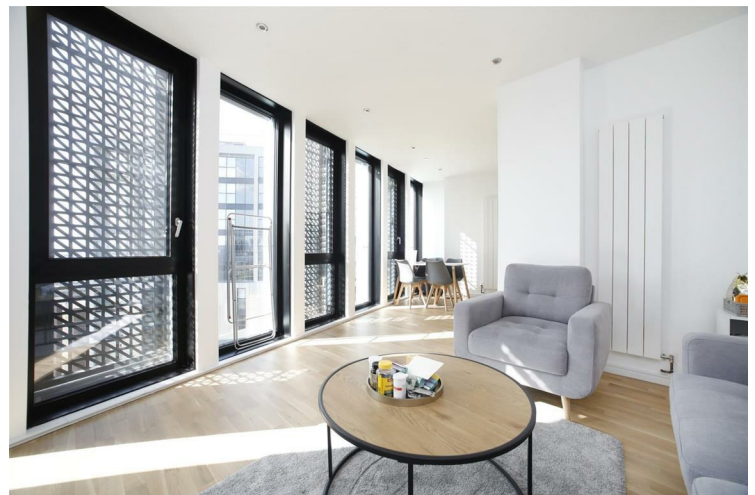
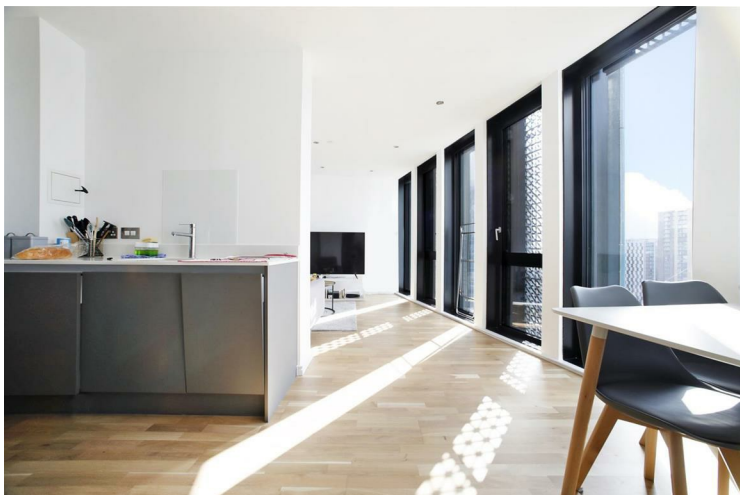
## Apt 22 Ceramic Building Newington Causeway

£3,300 PCM

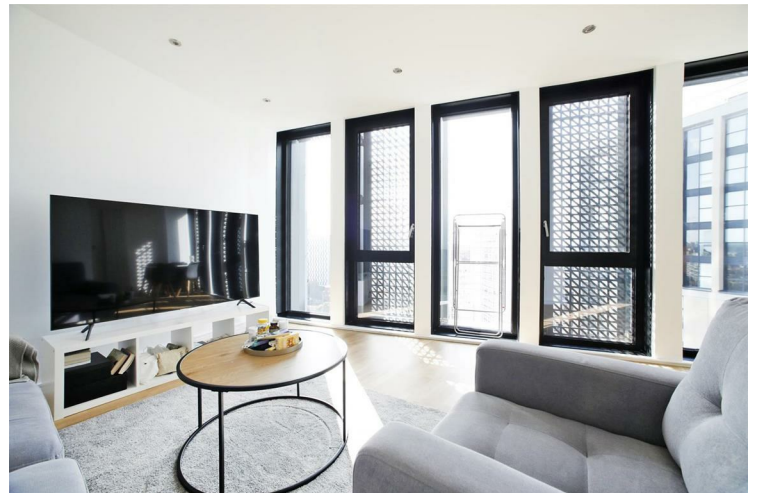
A spacious, well-presented two bedroom flat to rent in a brand new development opposite the trendy Italian Market Mercato Metropolitano between Borough and Elephant & Castle.

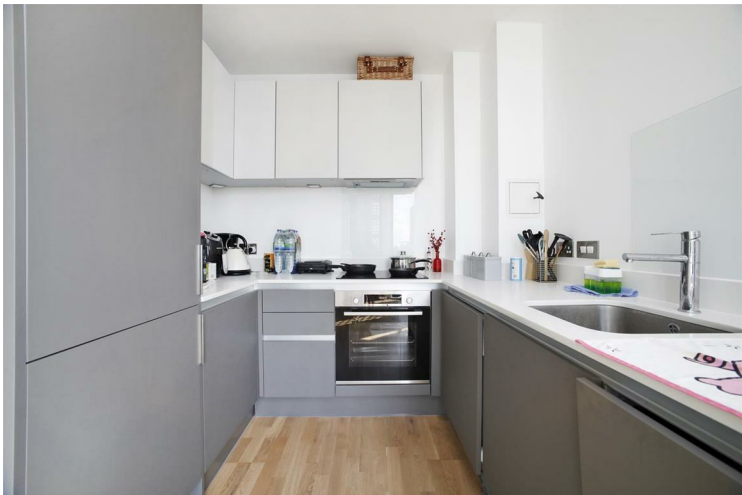
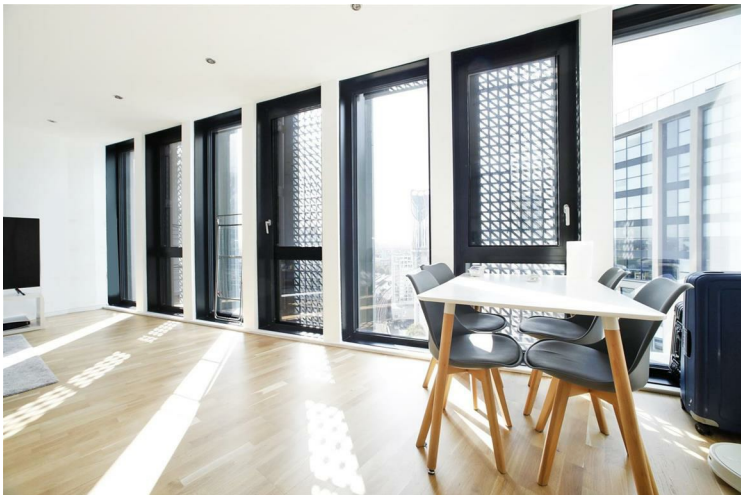
Elephant and Castle has fantastic transport links with two tube lines, over ground and a huge amount of bus options. It's also within walking distance of Borough and London Bridge as well as Waterloo and the South Bank. There are shops and restaurants on your doorstep and the changing nature of the area means there are new amenities opening all the time.

Call the lettings department to reserve a viewing 0207 015 1360.




- Two Bedroom Apartment • Two Bathrooms • Furnished • Available 17th September • Wooden flooring throughout







| Energy Efficiency Rating                           |   |           |
|--|---|-----------|
|  | Current   | Potential |
| <i>Very energy efficient - lower running costs</i> |   |           |
| (92 plus) <b>A</b>                                 |   |           |
| (81-91) <b>B</b>                                   |   |           |
| (69-80) <b>C</b>                                   |   |           |
| (55-68) <b>D</b>                                   |   |           |
| (39-54) <b>E</b>                                   |   |           |
| (21-38) <b>F</b>                                   |   |           |
| (1-20) <b>G</b>                                    |   |           |
| <i>Not energy efficient - higher running costs</i> |   |           |
| <b>England &amp; Wales</b>                         | EU Directive 2002/91/EC  |           |

Agents Note: Whilst every care has been taken to prepare these particulars, they are for guidance purposes only. All measurements are approximate and are for general guidance purposes only and whilst every care has been taken to ensure their accuracy, they should not be relied upon and potential buyers/tenants are advised to recheck the measurements

Borough Lettings  
230 Borough High Street  
London  
SE1 1JX

020 7015 1360  
enquiries@leonardleese.com  
www.leonardleese.com

