

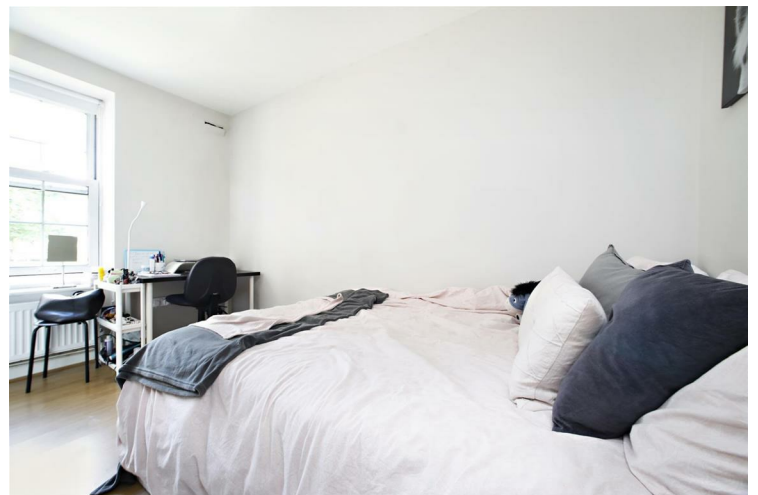


Bath Terrace SE1

£2,100 PCM

Modern, newly refurbished two bedroom apartment on Bath Terrace, Elephant and Castle SE1. The property comprises two large double bedrooms, a spacious living room, a modern kitchen and a modern bathroom. Offered furnished.

Call the lettings department to reserve a viewing on 0207 015 1360.



- Great Location • Two Bedroom Apartment • SE1 • Furnished • 0.3 miles - Elephant & Castle tube • 0.5 miles - Borough tube







| Energy Efficiency Rating | | |
|--|----------------------------|-----------|
| | Current | Potential |
| <i>Very energy efficient - lower running costs</i> | | |
| (92 plus) A | | |
| (81-91) B | | |
| (69-80) C | | |
| (55-68) D | 64 | |
| (39-54) E | | |
| (21-38) F | | |
| (1-20) G | | |
| <i>Not energy efficient - higher running costs</i> | | |
| England & Wales | EU Directive 2002/91/EC | |

Agents Note: Whilst every care has been taken to prepare these particulars, they are for guidance purposes only. All measurements are approximate and are for general guidance purposes only and whilst every care has been taken to ensure their accuracy, they should not be relied upon and potential buyers/tenants are advised to recheck the measurements

Borough Lettings
230 Borough High Street
London
SE1 1JX

020 7015 1360
enquiries@leonardleese.com
www.leonardleese.com

