



147b Farmer's Road
SE5

£2,000 PCM

Attractive two bedroom property on Farmers Road. The property is in excellent condition throughout with a smart interior design and comprises two bedrooms, large reception / dining room, kitchen and a modern bathroom.

A lovely, spacious lower ground floor flat with its own private entrance located just off Camberwell New Road with its numerous bus routes and excellent transport links to the West End and the City.

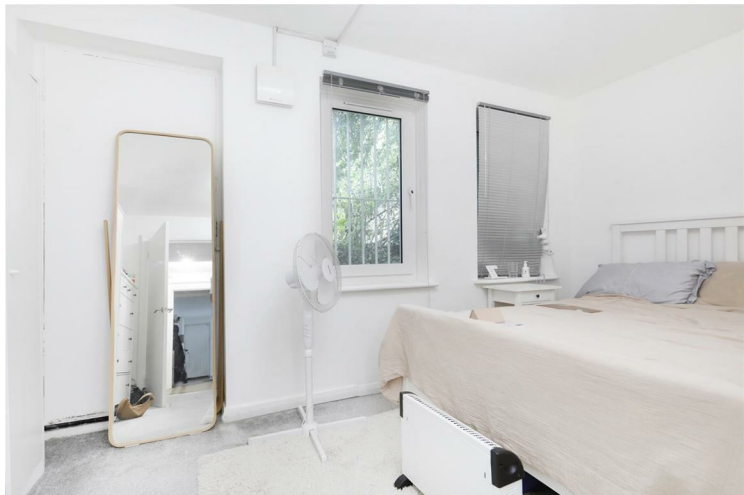
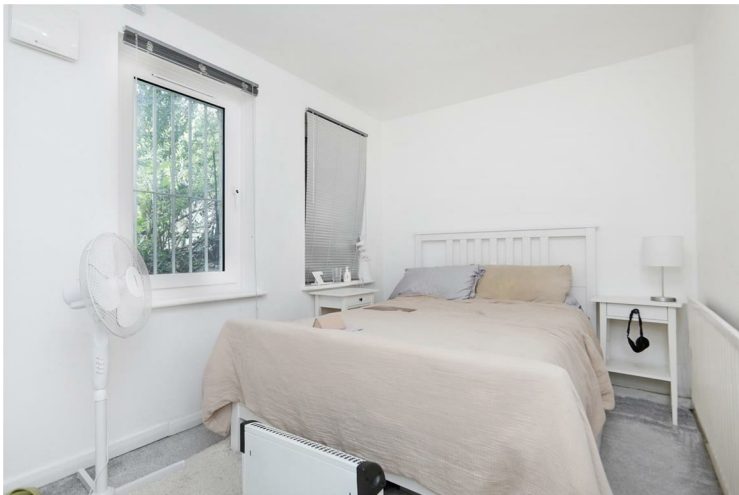
The property boasts fantastic storage and secure bike storage space in the porch.

Call the lettings team on 0207 015 1360 to arrange a viewing or for more information.



• Two Bedroom Apartment • Farmer's Road • Lower Ground • Period • Smaller 2nd Bedroom • Furnished







Energy Efficiency Rating		
	Current	Potential
Very energy efficient - lower running costs		
(92 plus) A		
(81-91) B		
(69-80) C	69	75
(55-68) D		
(39-54) E		
(21-38) F		
(1-20) G		
Not energy efficient - higher running costs		
England & Wales	EU Directive 2002/91/EC	

Agents Note: Whilst every care has been taken to prepare these particulars, they are for guidance purposes only. All measurements are approximate and are for general guidance purposes only and whilst every care has been taken to ensure their accuracy, they should not be relied upon and potential buyers/tenants are advised to recheck the measurements

Borough Lettings
230 Borough High Street
London
SE1 1JX

020 7015 1360
enquiries@leonardleese.com
www.leonardleese.com

