



11 St Michaels Court Borough

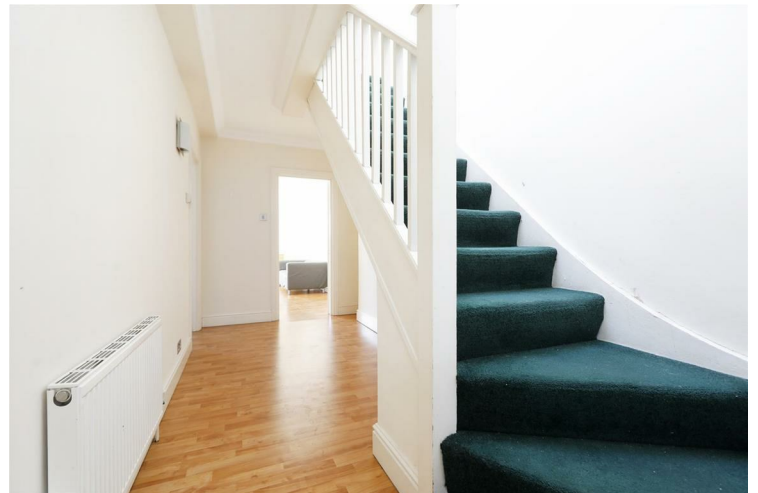
£2,800 PCM

LEONARD LEESE present to market this well located two double bedroom apartment in Borough SE1. Set over the top two floors of a modern, gated development, the property offers excellent living space comprising two spacious double bedrooms, two bathrooms and large open plan lounge kitchen. Offered furnished.

Call the lettings department to reserve a viewing 0207 015 1360.




- Two Double Bedrooms • Two Bathrooms (one en-suite) • Furnished • Split Level • Hulme Place SE1 • Seconds From Borough Tube • Gated Development







Energy Efficiency Rating		
	Current	Potential
<i>Very energy efficient - lower running costs</i>		
(92 plus) A		
(81-91) B		
(69-80) C		
(55-68) D		
(39-54) E		
(21-38) F		
(1-20) G		
<i>Not energy efficient - higher running costs</i>		
England & Wales	EU Directive 2002/91/EC 	

Agents Note: Whilst every care has been taken to prepare these particulars, they are for guidance purposes only. All measurements are approximate and are for general guidance purposes only and whilst every care has been taken to ensure their accuracy, they should not be relied upon and potential buyers/tenants are advised to recheck the measurements

Borough Lettings
230 Borough High Street
London
SE1 1JX

020 7015 1360
enquiries@leonardleese.com
www.leonardleese.com

