

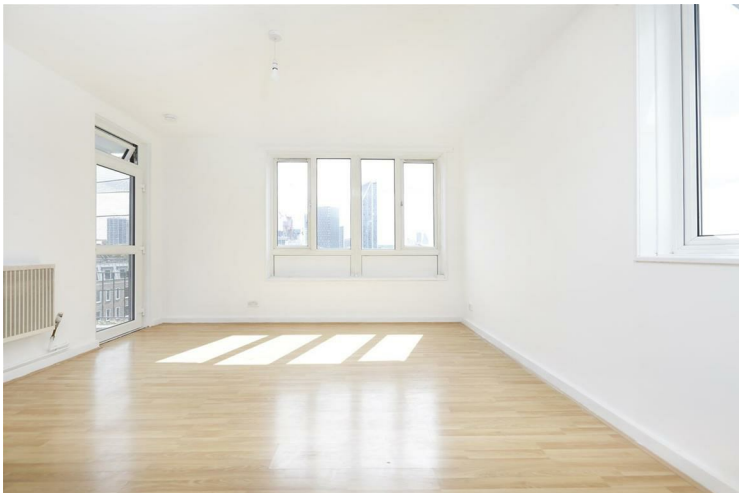


Redman House Lant Street

£360,000
LEASEHOLD

Modern one bedroom apartment set on the 8th floor of Redman House situated in the heart of Borough SE1. The property comprises a large reception room, modern kitchen, double bedroom and a modern bathroom. Providing amazing views of the City skyline from a spacious private balcony.

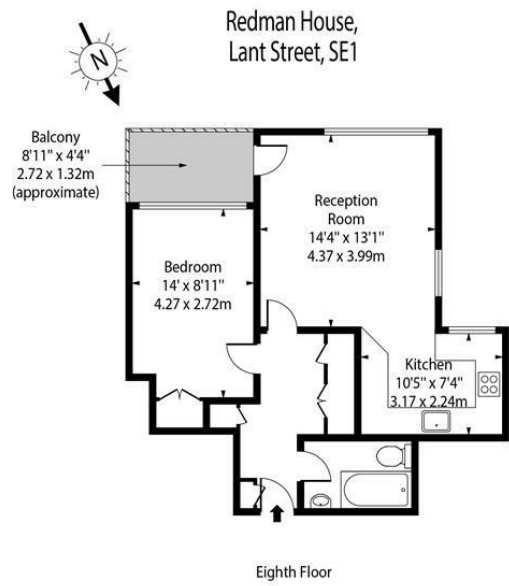
Call the sales department to reserve a viewing 0207 015 1360.



• One Bedroom Apartment • 8th Floor • Superb Views • Nice Condition
Throughout • Lease - 102 Years







Approx Gross Internal Area 545 Sq Ft - 50.63 Sq M

This floor plan should be used as a general outline for guidance only and does not constitute in whole or in part an offer or contract. Any intending purchaser or lessee should satisfy themselves by inspection, searches, enquiries and full survey as to the correctness of each statement. Any areas, measurements or distances quoted are approximate and should not be used to value a property or be the basis of any sale or let.



Energy Efficiency Rating		
	Current	Potential
Very energy efficient - lower running costs		
(92 plus) A		
(81-91) B		
(69-80) C	68	68
(55-68) D		
(39-54) E		
(21-38) F		
(1-20) G		
Not energy efficient - higher running costs		
England & Wales	EU Directive 2002/91/EC	

Agents Note: Whilst every care has been taken to prepare these particulars, they are for guidance purposes only. All measurements are approximate and are for general guidance purposes only and whilst every care has been taken to ensure their accuracy, they should not be relied upon and potential buyers/tenants are advised to recheck the measurements

Borough Sales
230 Borough High Street
London
SE1 1JX

020 7015 1360
enquiries@leonardleese.com
www.leonardleese.com

