



Borough Square London

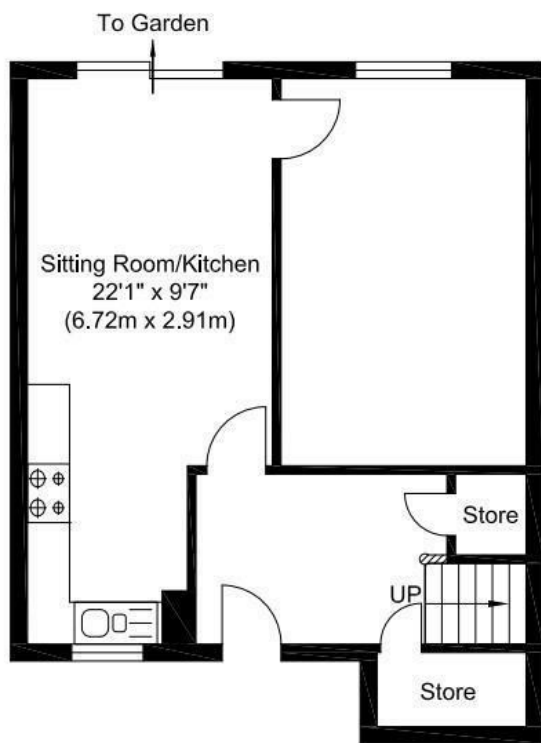
£750,000
FREEHOLD

LEONARD LEESE present to market this extremely rare opportunity of a two bedroom terraced house situated in the heart of SE1. The property comprises two double bedrooms, an open plan kitchen/living room, a separate living room, a modern bathroom and a private garden.

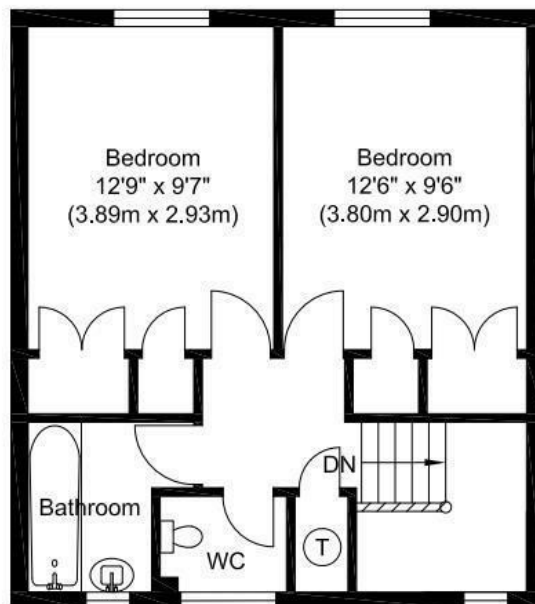
The property has been rented out for 10 years and licensed as a three bedroom property. It is a superb opportunity for any investor.

Call the sales department to reserve a viewing on 0207 015 1360.





Ground Floor
Approximate Floor Area
446.91 sq. ft.
(41.52 sq. m)




First Floor
Approximate Floor Area
428.18 sq. ft.
(39.78 sq. m)



Total Gross Internal Area
875.10 sq. ft.
(81.30 sq. m)



Energy Efficiency Rating		Current	Potential
Very energy efficient - lower running costs			
(92 plus) A			87
(81-91) B			
(69-80) C		67	
(55-68) D			
(39-54) E			
(21-38) F			
(1-20) G			
Not energy efficient - higher running costs			
England & Wales		EU Directive 2002/91/EC	

Agents Note: Whilst every care has been taken to prepare these particulars, they are for guidance purposes only. All measurements are approximate and are for general guidance purposes only and whilst every care has been taken to ensure their accuracy, they should not be relied upon and potential buyers/tenants are advised to recheck the measurements

Borough Lettings
230 Borough High Street
London
SE1 1JX

020 7015 1360
enquiries@leonardleese.com
www.leonardleese.com

