



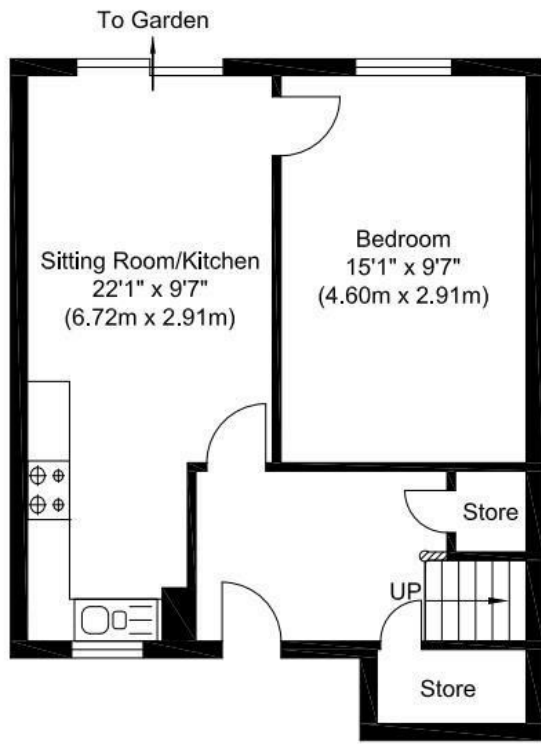
Borough Square London

£800,000
FREEHOLD

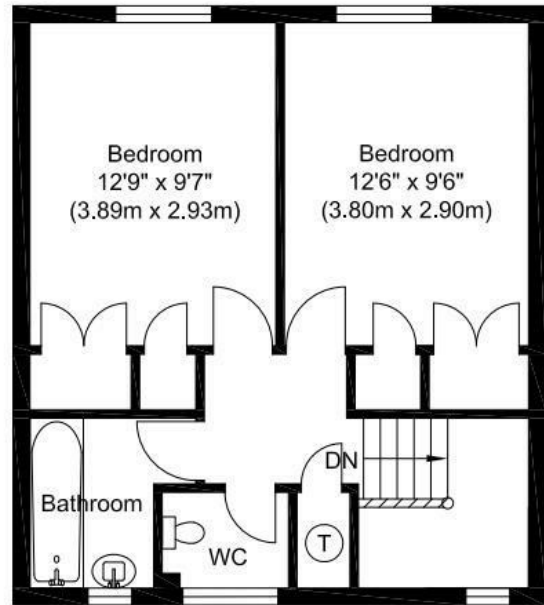
LEONARD LEESE present to market this extremely rare opportunity of a three bedroom terraced house situated in the heart of SE1. The property comprises three double bedrooms, an open plan kitchen/living room, a modern bathroom and a private garden.

Call the sales department to reserve a viewing on 0207 015 1360.





Ground Floor
 Approximate Floor Area
 446.91 sq. ft.
 (41.52 sq. m)



First Floor
 Approximate Floor Area
 428.18 sq. ft.
 (39.78 sq. m)



Total Gross Internal Area
 875.10 sq. ft.
 (81.30 sq. m)



Energy Efficiency Rating		Current	Potential
Very energy efficient - lower running costs			
(92 plus) A			87
(81-91) B			
(69-80) C			
(55-68) D		67	
(39-54) E			
(21-38) F			
(1-20) G			
Not energy efficient - higher running costs			
England & Wales		EU Directive 2002/91/EC	

Agents Note: Whilst every care has been taken to prepare these particulars, they are for guidance purposes only. All measurements are approximate and are for general guidance purposes only and whilst every care has been taken to ensure their accuracy, they should not be relied upon and potential buyers/tenants are advised to recheck the measurements

Borough Lettings
 230 Borough High Street
 London
 SE1 1JX

020 7015 1360
 enquiries@leonardleese.com
 www.leonardleese.com

