



Winchester House Southwark Bridge Road

£600,000
LEASEHOLD

Located in the heart of Borough and within a ten minute walk of the Southbank is this beautifully presented two double bedroom flat, comprising a large living/dining area with exposed brickwork and Juliette balcony, modern open plan kitchen with solid granite worktops, two double bedrooms and a smart family bathroom. Situated within a very sought after location with local shops, restaurants and bars, Winchester House is a well-managed block of nine flats. The Northern and Jubilee underground lines are both within easy reach, as are London Waterloo and London Bridge mainline stations.

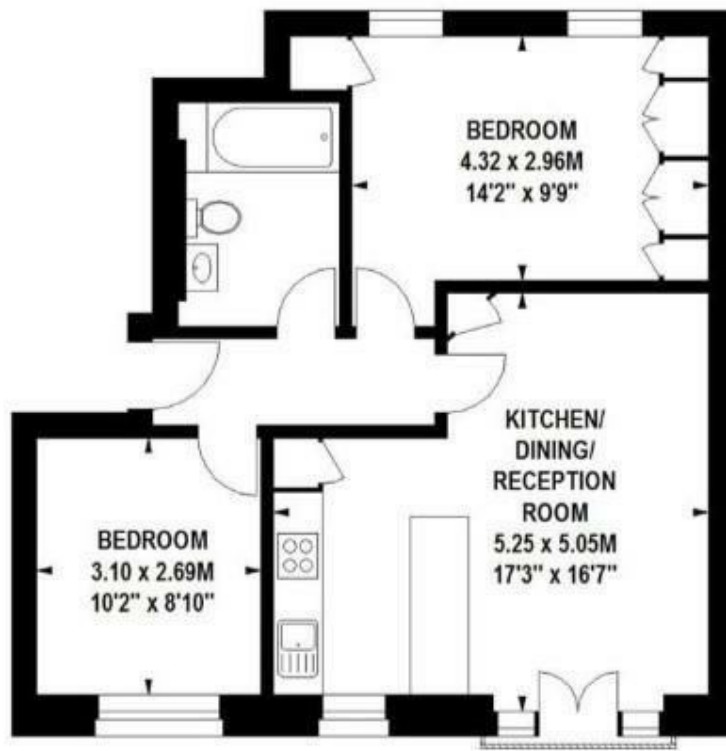
Call the sales department to reserve a viewing 0207 015 1360.



Winchester House, Southwark Bridge Road, SE1

Approximate gross internal area

56 sq m / 603 sq ft



Second Floor



Energy Efficiency Rating		Current	Potential
Very energy efficient - lower running costs			
(92 plus) A			
(81-91) B			
(69-80) C		74	79
(55-68) D			
(39-54) E			
(21-38) F			
(1-20) G			
Not energy efficient - higher running costs			
England & Wales		EU Directive 2002/91/EC	

Agents Note: Whilst every care has been taken to prepare these particulars, they are for guidance purposes only. All measurements are approximate and are for general guidance purposes only and whilst every care has been taken to ensure their accuracy, they should not be relied upon and potential buyers/tenants are advised to recheck the measurements

Borough Lettings
230 Borough High Street
London
SE1 1JX

020 7015 1360
enquiries@leonardleese.com
www.leonardleese.com

