



## Kitson Road

£4,000 PCM

Four bedroom period house on Kitson Road SE5 comprising a large double reception room, separate kitchen with access onto patio garden, four large bedrooms, two bathrooms and a study. Offered furnished.

Call the lettings department to reserve a viewing 0207 015 1360.

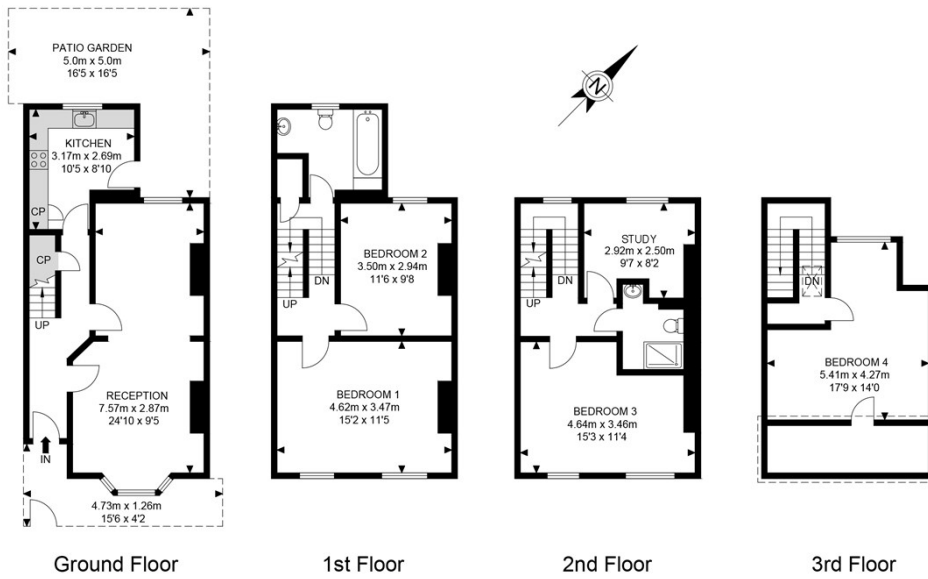


- Four Bedroom Period House • Two Bathrooms • Patio Garden • Double Reception • Furnished





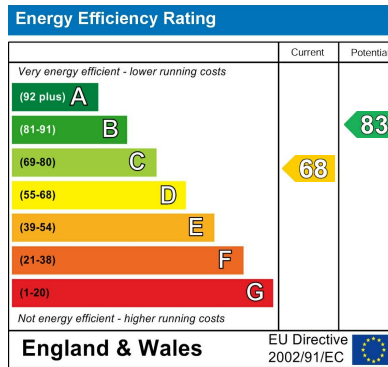
# Kitson Road



APPROX. GROSS INTERNAL FLOOR AREA 1422.98 SQ FT / 132.20 SQM  
 APPROX. GROSS EXTERNAL FLOOR AREA 193.75 SQ FT / 18.0 SQM  
 RESTRICTED AREA 80.72 SQ FT / 7.50 SQM

measurements of doors, windows, rooms and any other items are approximates and no responsibility is taken for any error, omission or mis-statement. this plan is for illustrative purposes only and should be used as such by any prospective purchaser. the service, system and appliances shown have not been tested and no guarantee as to their operability or efficiency can be given.

© SpacePhoto  
 Photography and Floor Plan



Agents Note: Whilst every care has been taken to prepare these particulars, they are for guidance purposes only. All measurements are approximate and are for general guidance purposes only and whilst every care has been taken to ensure their accuracy, they should not be relied upon and potential buyers/tenants are advised to recheck the measurements

Borough Lettings  
 230 Borough High Street  
 London  
 SE1 1JX

020 7015 1360  
 enquiries@leonardleese.com  
 www.leonardleese.com

