



18B Lyndhurst Way SE15

£529,950
LEASEHOLD

A generously-proportioned two bed, two bath conversion flat of 793 square feet. It takes the first floor of a Victorian terrace at the Peckham Road end of Lyndhurst Way. You're a short walk from Peckham Rye's zone 2 station (half a mile/10 minutes), and close to brilliant bus routes too, as well as Peckham and Camberwell's town centres. The flat's been recently renovated (new kitchen plus new bath and shower room, plus a new Worcester Bosch boiler).

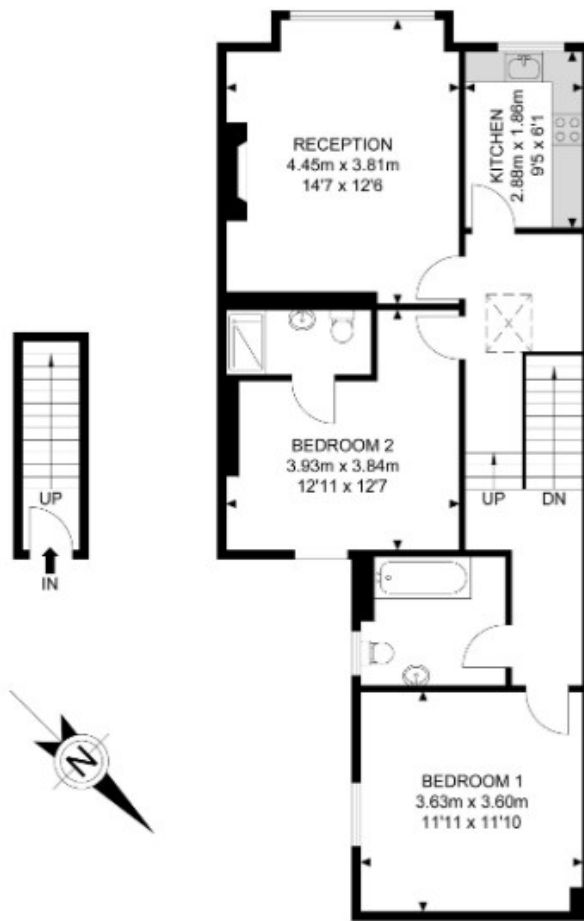
Call the sales department to reserve a viewing 0207 015 1360.



- Two Double Bedrooms • Two Bathrooms (one en-suite) • Victorian Conversion • Split Level • Length of Lease - 160 years • Service Charge - £450 PA • Superb Location







Ground Floor

1st Floor



APPROX. GROSS INTERNAL FLOOR AREA 793.30 SQ FT / 73.70 SQM



Energy Efficiency Rating		
	Current	Potential
Very energy efficient - lower running costs		
(92 plus) A		
(81-91) B	77	77
(69-80) C		
(55-68) D		
(39-54) E		
(21-38) F		
(1-20) G		
Not energy efficient - higher running costs		
England & Wales	EU Directive 2002/91/EC	

Agents Note: Whilst every care has been taken to prepare these particulars, they are for guidance purposes only. All measurements are approximate and are for general guidance purposes only and whilst every care has been taken to ensure their accuracy, they should not be relied upon and potential buyers/tenants are advised to recheck the measurements

Borough Sales
230 Borough High Street
London
SE1 1JX

020 7015 1360
enquiries@leonardleese.com
www.leonardleese.com

