



Westcliffe Apartment Prade Street

£2,400 Per

A modern one double bedroom apartment to let. Located on the second floor of a modern development offering almost 500 square feet of living space. Accommodation comprises of an open plan kitchen and reception room, bedroom with fitted wardrobes and a tiled bathroom. Located close to Paddington and Edgware Road underground station and local amenities. Benefits include 24 hour concierge - Finished with neutral décor and wood floors. Offered furnished and available from Mid September 2023.

Call the lettings department to reserve a viewing 0207 015 1360.



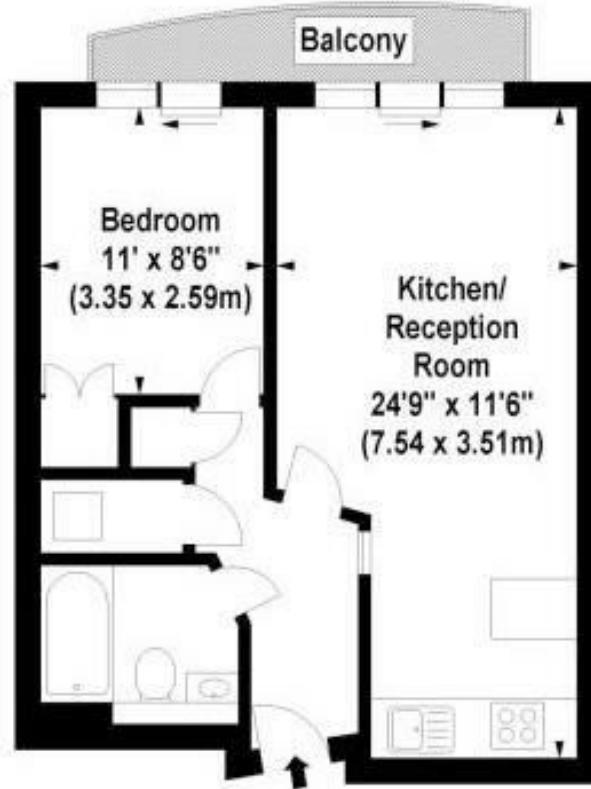
• One Bed Apartment • Superb Location • Concierge • Furnished • Available 1st June





Westcliffe Apartments, South Wharf Road, W2

Approx. Gross Internal Area *
495 Sq Ft - 46.02 Sq M



| Energy Efficiency Rating | | Current | Potential |
|---|--|-------------------------|-----------|
| Very energy efficient - lower running costs | | | |
| (92 plus) A | | | |
| (81-91) B | | | |
| (69-80) C | | | |
| (55-68) D | | | |
| (39-54) E | | | |
| (21-38) F | | | |
| (1-20) G | | | |
| Not energy efficient - higher running costs | | | |
| England & Wales | | EU Directive 2002/91/EC | |

Agents Note: Whilst every care has been taken to prepare these particulars, they are for guidance purposes only. All measurements are approximate and are for general guidance purposes only and whilst every care has been taken to ensure their accuracy, they should not be relied upon and potential buyers/tenants are advised to recheck the measurements

Borough Lettings
230 Borough High Street
London
SE1 1JX

020 7015 1360
enquiries@leonardleese.com
www.leonardleese.com

