

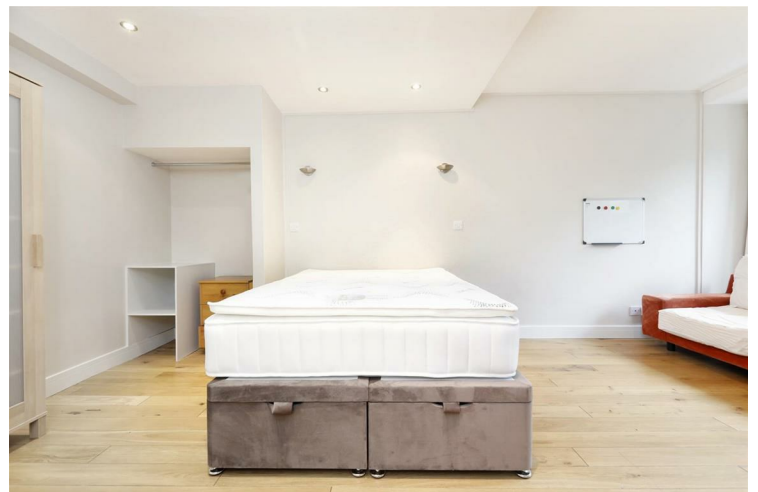


## Redman House Lant Street

£1,700 PCM

Leonard Leese are please to present a very well proportioned and located studio apartment within Redman House, Borough SE1. Internally, the property offers generous living space and comprises a spacious semi open-plan reception room/bedroom with direct access onto a private patio, fully equipped kitchen and a brand new bathroom with shower. Residents benefit from well maintained communal gardens.

Call the lettings department to reserve a viewing 0207 015 1360.




• Studio Apartment • Furnished • Ground Floor • Private Patio • Great Condition Throughout







Energy Efficiency Rating		
	Current	Potential
<i>Very energy efficient - lower running costs</i>		
(92 plus) <b>A</b>		
(81-91) <b>B</b>		
(69-80) <b>C</b>		
(55-68) <b>D</b>		
(39-54) <b>E</b>		
(21-38) <b>F</b>		
(1-20) <b>G</b>		
<i>Not energy efficient - higher running costs</i>		
<b>England &amp; Wales</b>	EU Directive 2002/91/EC 	

Agents Note: Whilst every care has been taken to prepare these particulars, they are for guidance purposes only. All measurements are approximate and are for general guidance purposes only and whilst every care has been taken to ensure their accuracy, they should not be relied upon and potential buyers/tenants are advised to recheck the measurements

Borough Lettings  
230 Borough High Street  
London  
SE1 1JX

020 7015 1360  
enquiries@leonardleese.com  
www.leonardleese.com

