

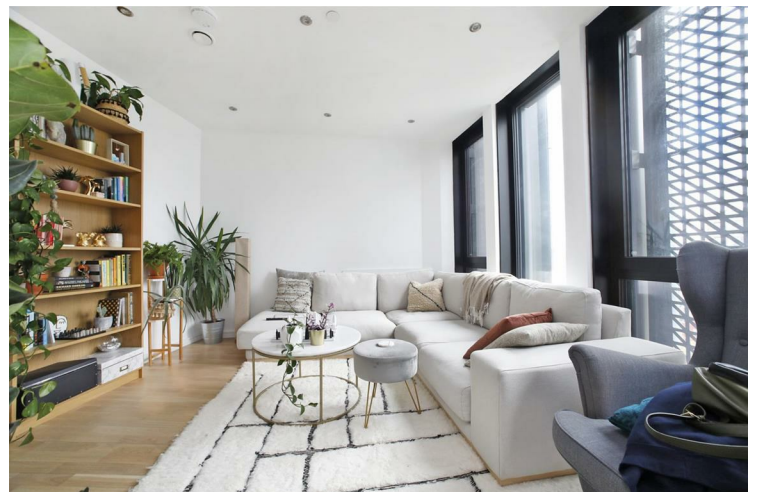
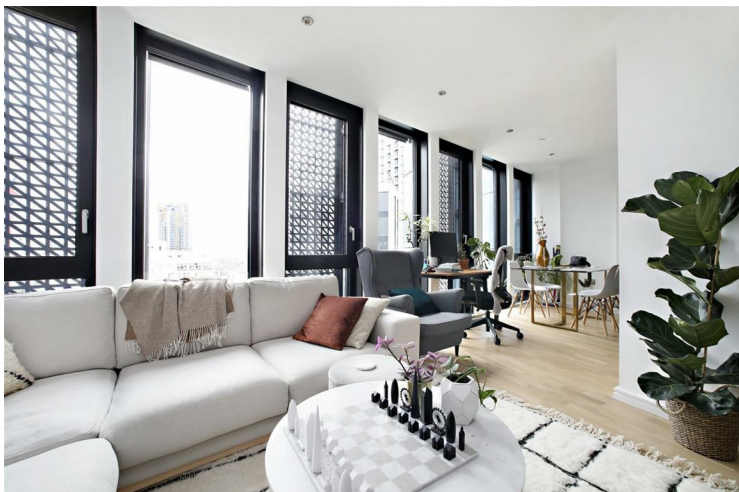


## 26 Newington Causeway London

£3,000 Per

Leonard Leese are pleased to market this spacious, extremely modern two bedroom two bathroom apartment to rent in a brand new development situated in the heart of SE1. Compromising of wood flooring throughout, city views, a superb private balcony and well-proportioned open plan living, this property is a must see! Positioned opposite the trendy Italian Market Mercato Metropolitano between Borough and Elephant & Castle.


Call the lettings department to reserve a viewing 0207 015 1360.









Energy Efficiency Rating		
	Current	Potential
<i>Very energy efficient - lower running costs</i>		
(92 plus) <b>A</b>		
(81-91) <b>B</b>		
(69-80) <b>C</b>		
(55-68) <b>D</b>		
(39-54) <b>E</b>		
(21-38) <b>F</b>		
(1-20) <b>G</b>		
<i>Not energy efficient - higher running costs</i>		
<b>England &amp; Wales</b>	EU Directive 2002/91/EC 	

Agents Note: Whilst every care has been taken to prepare these particulars, they are for guidance purposes only. All measurements are approximate and are for general guidance purposes only and whilst every care has been taken to ensure their accuracy, they should not be relied upon and potential buyers/tenants are advised to recheck the measurements

Borough Lettings  
230 Borough High Street  
London  
SE1 1JX

020 7015 1360  
enquiries@leonardleese.com  
www.leonardleese.com

