



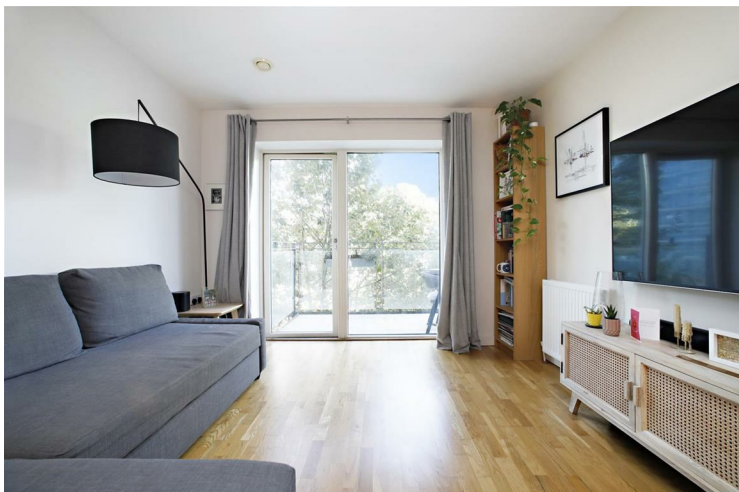
Eyot House Sun Passage

£400,000
LEASEHOLD

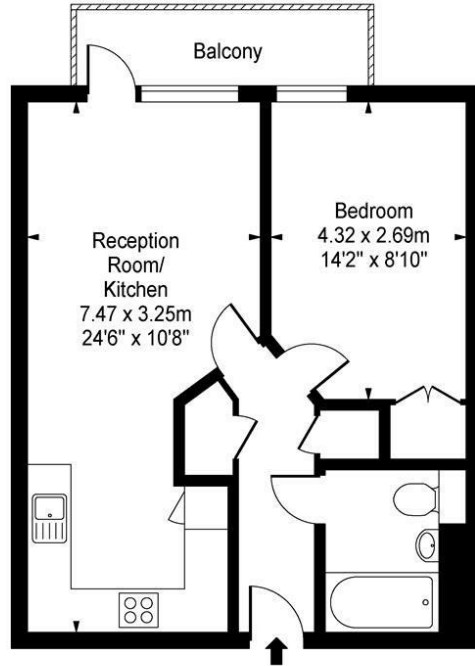
Leonard Leese are pleased to market this beautiful one bedroom apartment presented in fantastic condition throughout situated in the heart of SE16 Bermondsey. A sought after development, the property comprises a spacious double bedroom, a large open plan kitchen living space, private balcony, ample storage and lots of natural light.

Eyot House is only 0.2 miles from Bermondsey station. Shad Thames, London Bridge, Maltby Street Market and a wide range of shops, cafés and restaurants are all close by.

Call the sales department to reserve a viewing 0207 015 1360.



Sun Passage London, SE16



Third Floor

Approx Gross Internal Area 490 Sq Ft - 45.52Sq M

This floor plan should be used as a general outline for guidance only and does not constitute in whole or in part an offer or contract. Any intending purchaser or lessee should satisfy themselves by inspection, searches, enquiries and full survey as to the correctness of each statement. Any areas, measurements or distances quoted are approximate and should not be used to value a property or be the basis of any sale or let.



Energy Efficiency Rating		
	Current	Potential
Very energy efficient - lower running costs		
(92 plus) A		
(81-91) B	84	84
(69-80) C		
(55-68) D		
(39-54) E		
(21-38) F		
(1-20) G		
Not energy efficient - higher running costs		
England & Wales	EU Directive 2002/91/EC	

Agents Note: Whilst every care has been taken to prepare these particulars, they are for guidance purposes only. All measurements are approximate and are for general guidance purposes only and whilst every care has been taken to ensure their accuracy, they should not be relied upon and potential buyers/tenants are advised to recheck the measurements

Borough Sales
230 Borough High Street
London
SE1 1JX

020 7015 1360
enquiries@leonardleese.com
www.leonardleese.com

