



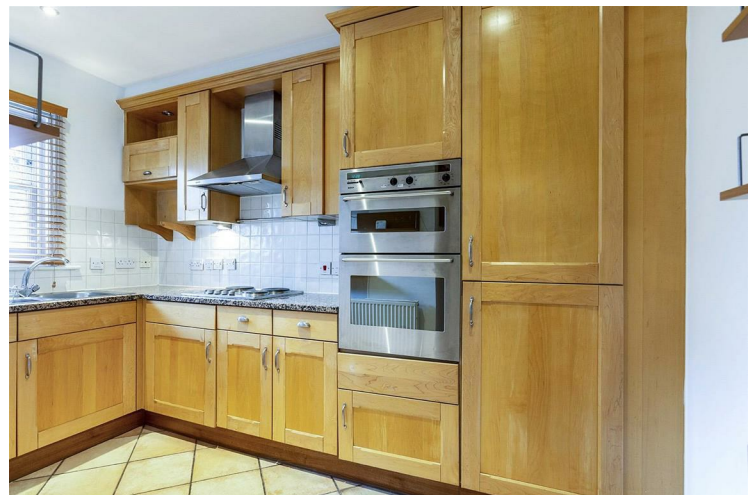
Brockham Street SE1

£650,000
LEASEHOLD

A spacious two-bedroom, two-bathroom apartment set within this attractive purpose-built development located just off the tranquil Trinity Church Square. The property comprises two double bedrooms, two bathrooms (one en-suite shower room), generous reception room and a separate fully fitted kitchen. Fraser Court is located within a five-minute walk from Borough Tube Station while London Bridge, Elephant & Castle, Borough Market, Bermondsey Street and the South Bank are minutes away.

The property also comes with a gated parking space.

Call the sales department to reserve a viewing 0207 015 1360.

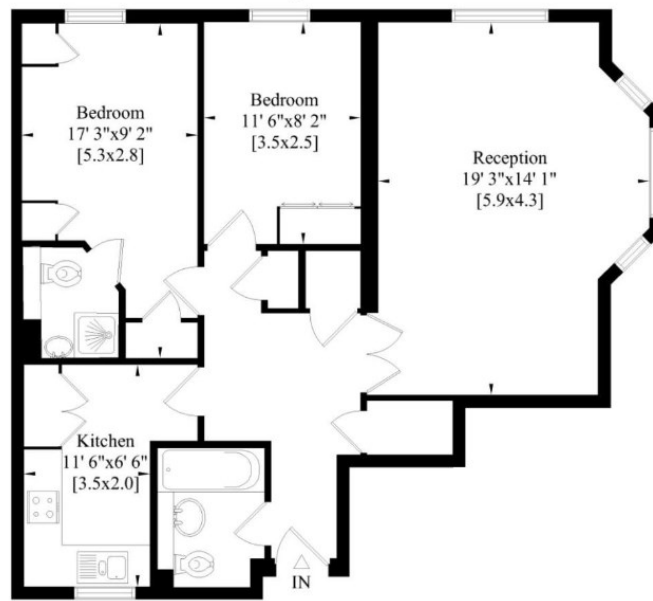


- Two Double Bedrooms • Two Bathrooms (one en-suite) • Ground Floor • Great Location • Service Charge - £355 per month



• Council Tax - Band E (£1,948 p/yr) • Gated Parking Space Included





Energy Efficiency Rating		
	Current	Potential
Very energy efficient - lower running costs		
(92 plus) A		
(81-91) B		
(69-80) C	71	78
(55-68) D		
(39-54) E		
(21-38) F		
(1-20) G		
Not energy efficient - higher running costs		
England & Wales	EU Directive 2002/91/EC	

Agents Note: Whilst every care has been taken to prepare these particulars, they are for guidance purposes only. All measurements are approximate and are for general guidance purposes only and whilst every care has been taken to ensure their accuracy, they should not be relied upon and potential buyers/tenants are advised to recheck the measurements

Borough Sales
230 Borough High Street
London
SE1 1JX

020 7015 1360
enquiries@leonardleese.com
www.leonardleese.com

