

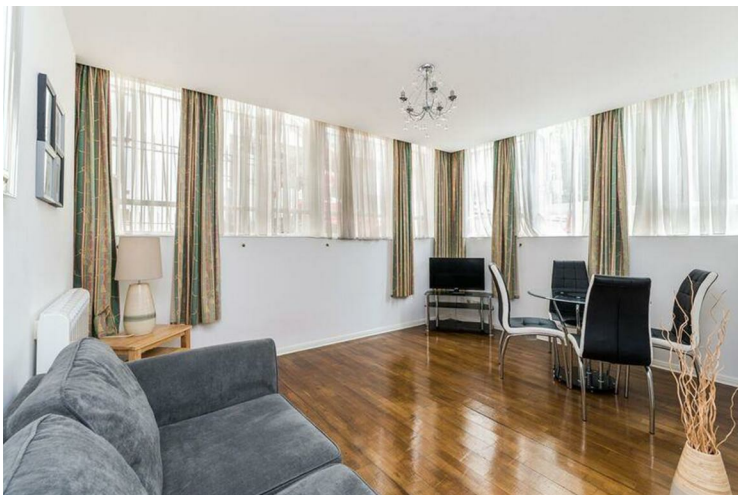


Newington Causeway London


£1,850 PCM

One bedroom apartment in Metro Central Heights, SE1. The property boasts a large open plan kitchen living area, a large double bedroom with built-in storage and a good sized bathroom. This property offers 24 hour concierge service, access to the gym and steam room, all inclusive. Excellently situated with Elephant and Castle tube station minutes away. Offered Furnished.

Call the lettings department to reserve a viewing on 0207 015 1360.





Energy Efficiency Rating		
	Current	Potential
<i>Very energy efficient - lower running costs</i>		
(92 plus) A		
(81-91) B		
(69-80) C		
(55-68) D	65	73
(39-54) E		
(21-38) F		
(1-20) G		
<i>Not energy efficient - higher running costs</i>		
England & Wales	EU Directive 2002/91/EC 	

Agents Note: Whilst every care has been taken to prepare these particulars, they are for guidance purposes only. All measurements are approximate and are for general guidance purposes only and whilst every care has been taken to ensure their accuracy, they should not be relied upon and potential buyers/tenants are advised to recheck the measurements

Borough Lettings
 230 Borough High Street
 London
 SE1 1JX

020 7015 1360
enquiries@leonardleese.com
www.leonardleese.com

