



Lockwood Square London

£290,000
LEASEHOLD

Located moments from Bermondsey station and Southwark Park, this one double bedroom flat is immaculately presented and boasts great views, a modern kitchen and bathroom, large living space, ample storage, and a private balcony.

Lockwood Square is located only 0.2 miles from Bermondsey station. Southwark Park along with a wide range of artisan delis, shops and markets are close by.

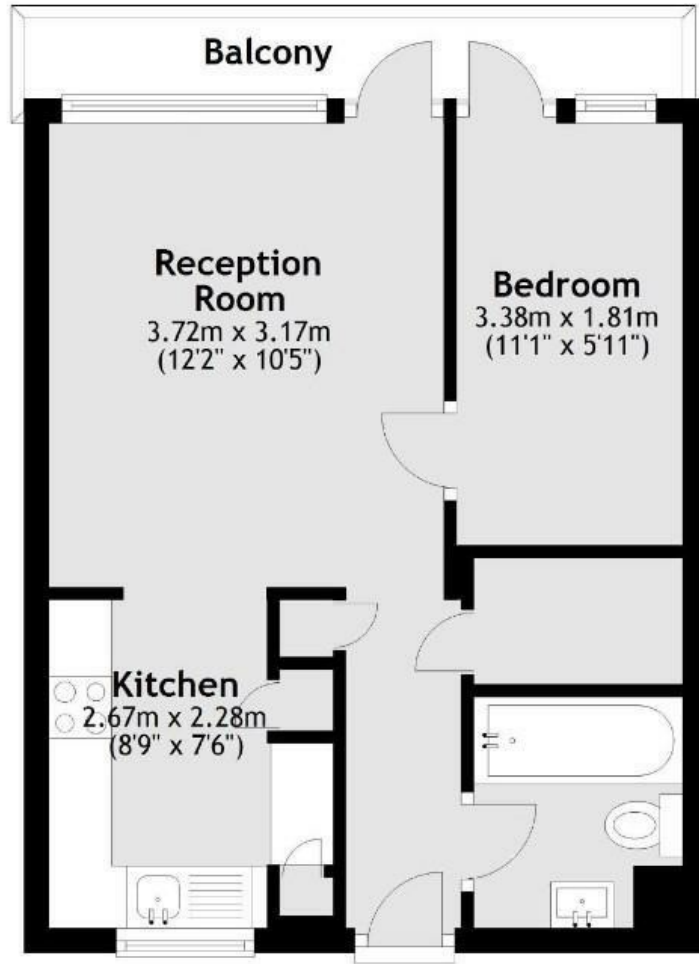
Call the Sales Department to reserve a viewing 0207 015 1360.



- One Bedroom Apartment • Private Balcony • Excellent Condition • Parking Available • Great Views







Main area: Approx. 32.8 sq. metres (352.7 sq. feet)
 Plus balconies, approx. 3.9 sq. metres (42.3 sq. feet)



Energy Efficiency Rating		
	Current	Potential
Very energy efficient - lower running costs		
(92 plus) A		
(81-91) B	82	82
(69-80) C		
(55-68) D		
(39-54) E		
(21-38) F		
(1-20) G		
Not energy efficient - higher running costs		
England & Wales	EU Directive 2002/91/EC	

Agents Note: Whilst every care has been taken to prepare these particulars, they are for guidance purposes only. All measurements are approximate and are for general guidance purposes only and whilst every care has been taken to ensure their accuracy, they should not be relied upon and potential buyers/tenants are advised to recheck the measurements

Borough Sales
 230 Borough High Street
 London
 SE1 1JX

020 7015 1360
 enquiries@leonardleese.com
 www.leonardleese.com

