



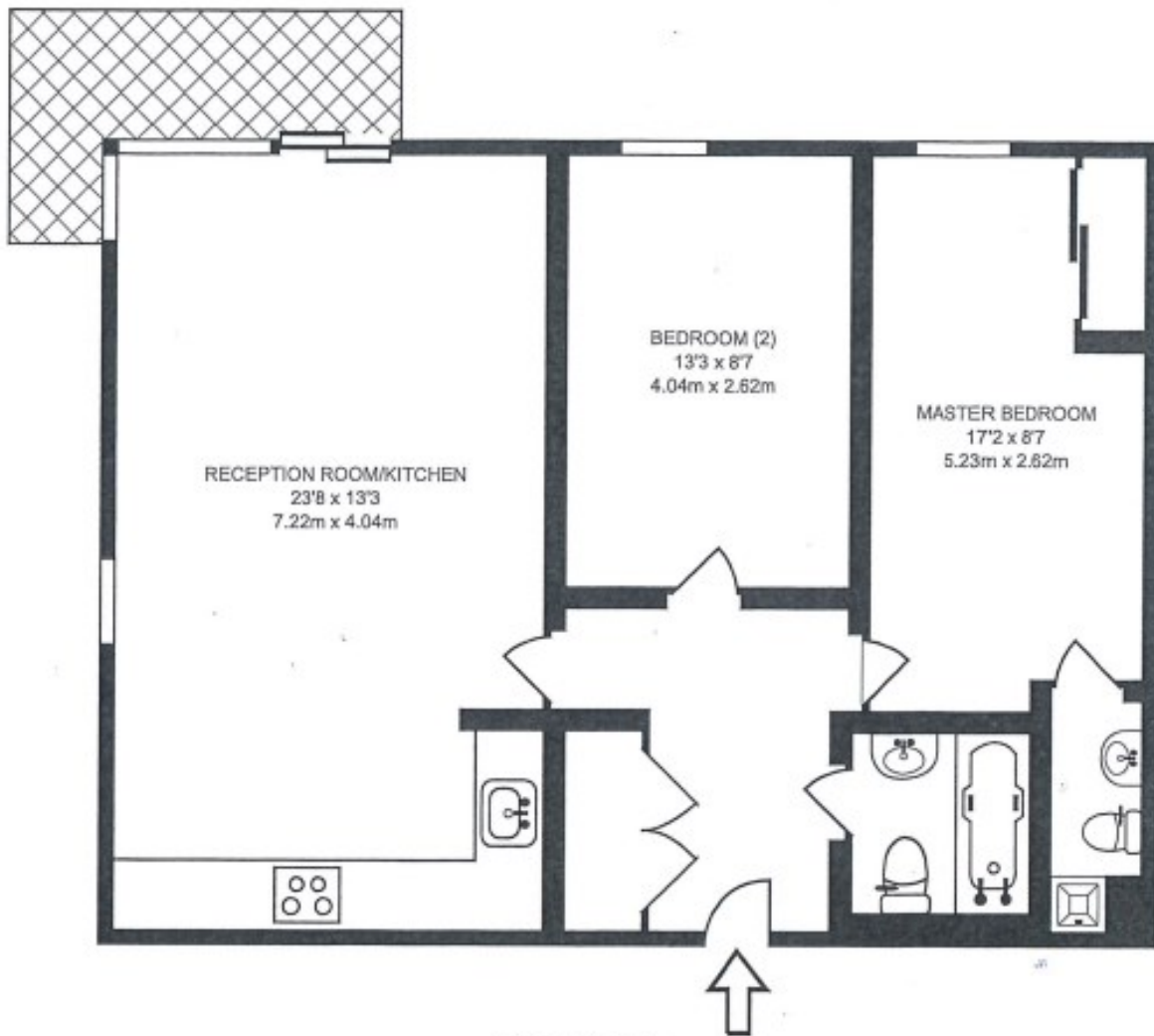
## Pollard House Bermondsey

**£568,000**  
LEASEHOLD

LEONARD LEESE presents to the market this well presented two bed two bath apartment in Pollard House, SE16. This spacious two double bedroom apartment is set on the first floor and comprises a large open plan lounge/kitchen with direct access onto a large private balcony, two double bedrooms and two bathrooms (one en-suite). Superbly located with all the amenities of Bermondsey only a short walk away whilst offering excellent access into the City and West End.

Call the sales department to reserve a viewing on 0207 015 1360.





FIRST FLOOR  
744 SQ FT/69.11 SQ M



Energy Efficiency Rating		
	Current	Potential
<i>Very energy efficient - lower running costs</i>		
(92 plus) <b>A</b>		
(81-91) <b>B</b>		
(69-80) <b>C</b>		
(55-68) <b>D</b>		
(39-54) <b>E</b>		
(21-38) <b>F</b>		
(1-20) <b>G</b>		
<i>Not energy efficient - higher running costs</i>		
<b>England &amp; Wales</b>	EU Directive 2002/91/EC	

Agents Note: Whilst every care has been taken to prepare these particulars, they are for guidance purposes only. All measurements are approximate and are for general guidance purposes only and whilst every care has been taken to ensure their accuracy, they should not be relied upon and potential buyers/tenants are advised to recheck the measurements

**Borough Sales**  
230 Borough High Street  
London  
SE1 1JX

020 7015 1360  
enquiries@leonardleese.com  
www.leonardleese.com

