



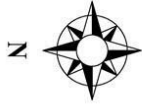
**Rockingham Street**  
**SE1**

**£520,000**  
**LEASEHOLD**

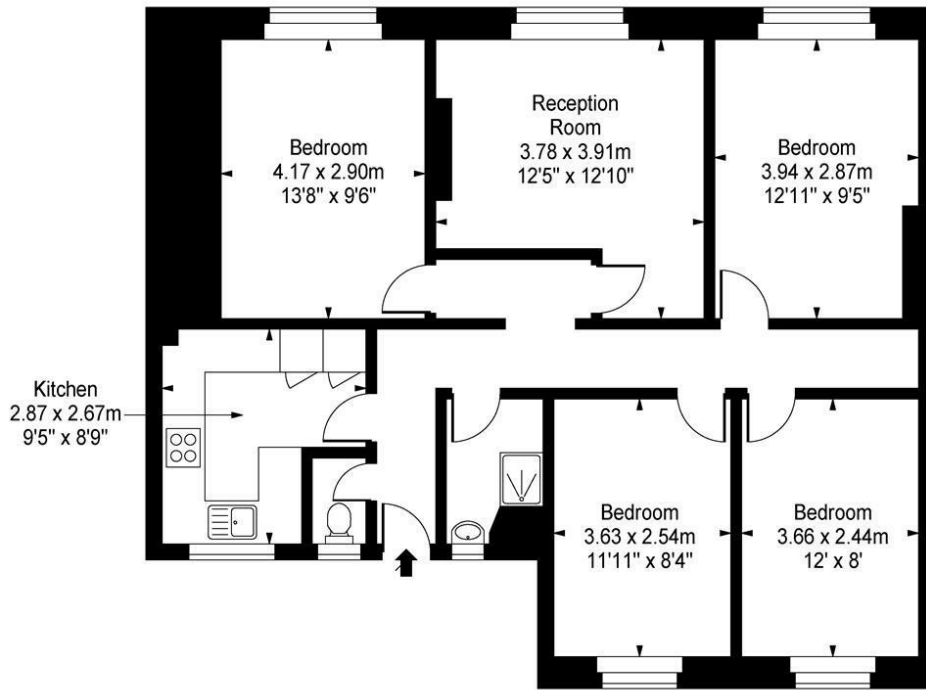
Leonard Leese are pleased to market this amazing four double bedroom property situated in the heart of SE1. Comprising of four really good size double bedrooms, a lovely & spacious living room, a recently refurbished bathroom with separate WC and a modern kitchen. Close to great amenities with E&C and Borough market close by.

Call the sales department to reserve a viewing 0207 015 1360.





## Rockingham Street, SE1



First Floor

Approx Gross Internal Area 875 Sq Ft - 81.29 Sq M

This floor plan should be used as a general outline for guidance only and does not constitute in whole or in part an offer or contract. Any intending purchaser or lessee should satisfy themselves by inspection, searches, enquiries and full survey as to the correctness of each statement. Any areas, measurements or distances quoted are approximate and should not be used to value a property or be the basis of any sale or let.



Energy Efficiency Rating		Current	Potential
Very energy efficient - lower running costs			
(92 plus) A			
(81-91) B			
(69-80) C		72	81
(55-68) D			
(39-54) E			
(21-38) F			
(1-20) G			
Not energy efficient - higher running costs			
England & Wales		EU Directive 2002/91/EC	

Agents Note: Whilst every care has been taken to prepare these particulars, they are for guidance purposes only. All measurements are approximate and are for general guidance purposes only and whilst every care has been taken to ensure their accuracy, they should not be relied upon and potential buyers/tenants are advised to recheck the measurements

**Borough Lettings**  
230 Borough High Street  
London  
SE1 1JX

020 7015 1360  
enquiries@leonardleese.com  
www.leonardleese.com

