



Bryan Bishop
and partners

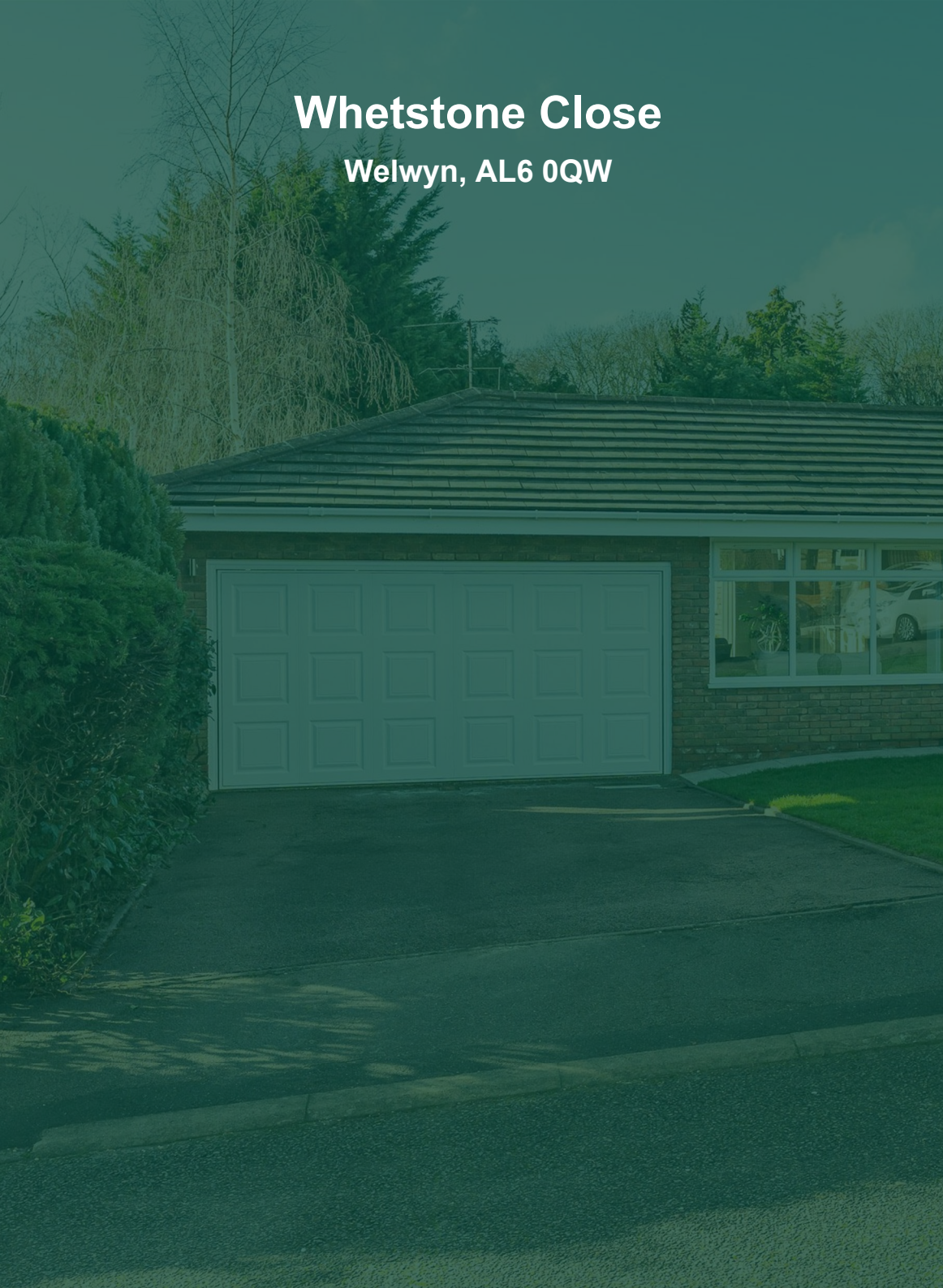
Whetstone Close
Welwyn, AL6 0QW

Guide price £850,000



Whetstone Close

Welwyn, AL6 0QW

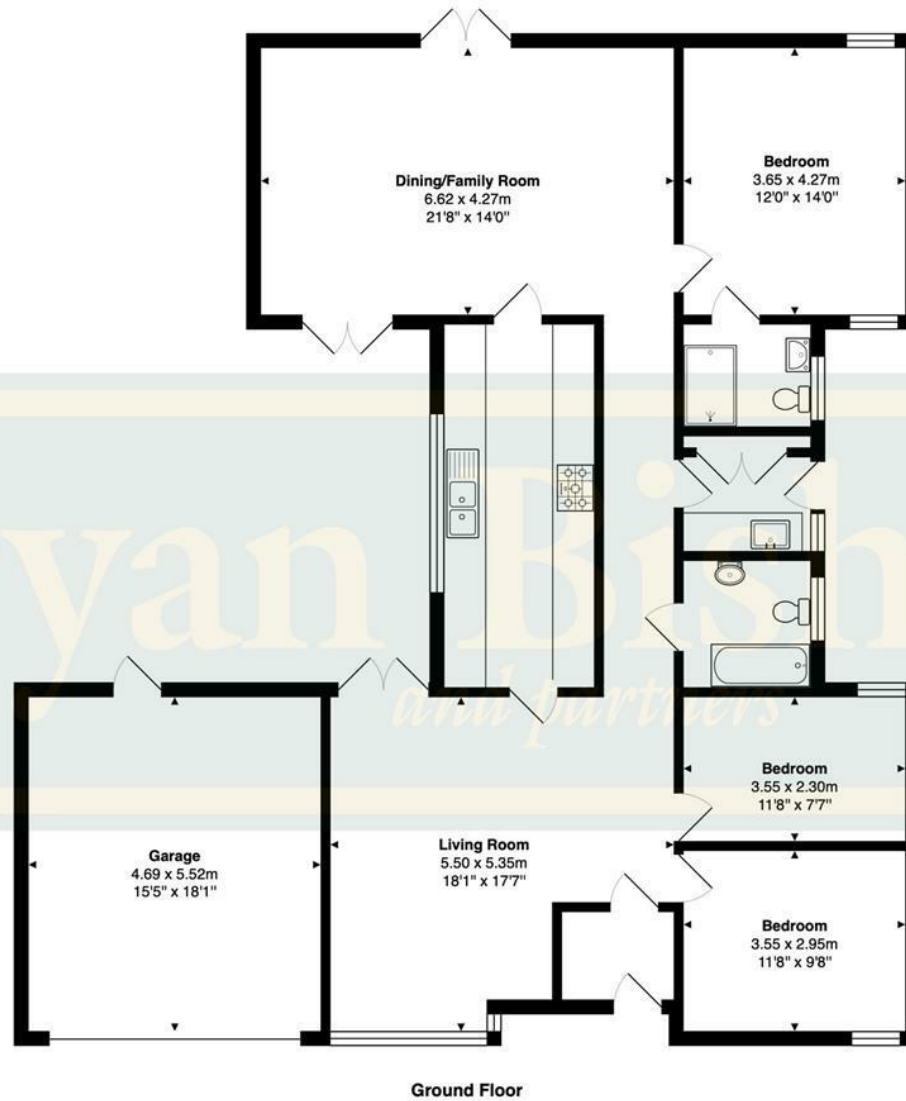








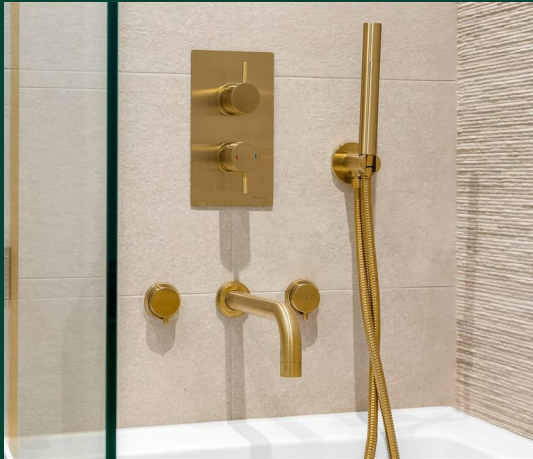
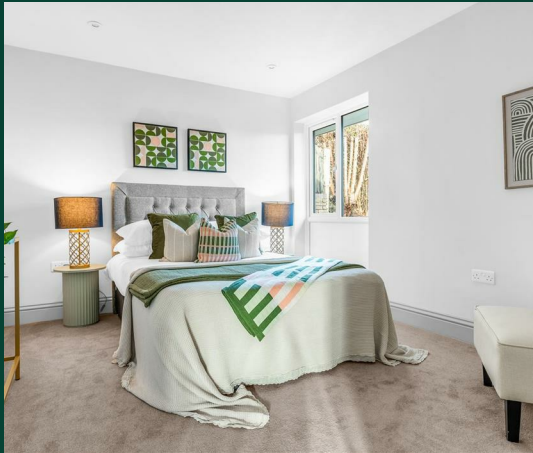




Total Area: 153.7 m² ... 1654 ft²

Energy Efficiency Rating		
	Current	Potential
Very energy efficient - lower running costs		
(92 plus) A		
(81-91) B		
(69-80) C		
(55-68) D		
(39-54) E		
(21-38) F		
(1-20) G		
Not energy efficient - higher running costs		
	62	77
England & Wales <small>EU Directive 2002/91/EC</small>		









Bryan Bishop
and partners

6a High Street | Welwyn | AL6 9EG | 01438 718877 | info@bryanbishop.co.uk | www.bryanbishop.co.uk Find us on

