



Bryan Bishop
and partners

Barbara Court
Welwyn, AL6 9GB

Guide price £425,000



Barbara Court

Welwyn, AL6 9GB

A stylish two-bedroom terraced home in a sought-after Wilshere Park location, perfect for buyers seeking comfort, elegance and convenience. Benefiting from off-street parking, a generous garden and spacious living areas.

Property Description:

Tucked away in the heart of the prestigious Wilshere Park development and backing onto the historic Frythe Building, this beautifully presented home offers spacious and thoughtfully arranged accommodation.

The welcoming entrance hall includes a convenient downstairs cloakroom, stairs to the first floor and access to both the kitchen and the lounge. The lounge is a bright and airy space, featuring dual aspect windows and double doors opening onto the rear garden, seamlessly connecting indoor and outdoor living.

The contemporary kitchen is finished to a high standard with quality fittings and provides a practical yet stylish space for cooking and dining.

Upstairs, the property offers two well-proportioned bedrooms, each designed with a modern feel, along with a tastefully appointed family bathroom.

Outside, the garden is mainly laid to lawn, complemented by flower bed borders and a patio area—ideal for entertaining or relaxing in the warmer months.

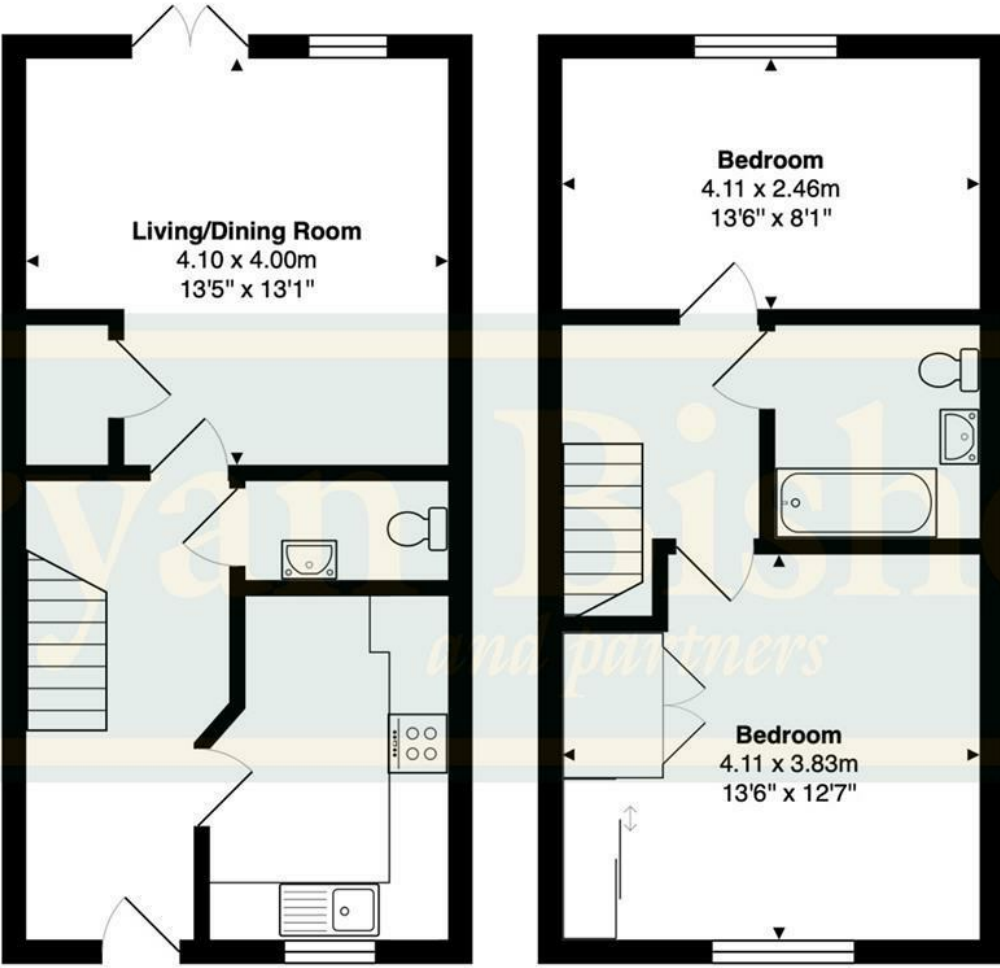
Additional benefits include off-street parking, adding to the everyday convenience this delightful home has to offer.











Energy Efficiency Rating		
	Current	Potential
Very energy efficient - lower running costs		
(92 plus) A		87
(81-91) B		
(69-80) C		
(55-68) D		
(39-54) E		
(21-38) F		
(1-20) G		
Not energy efficient - higher running costs		
		73
England & Wales		EU Directive 2002/91/EC



Bryan Bishop
and partners

6a High Street | Welwyn | AL6 9EG | 01438 718877 | info@bryanbishop.co.uk | www.bryanbishop.co.uk Find us on

