



**Bryan Bishop**  
*and partners*

**Godfries Close**  
Tewin, AL6 0LQ



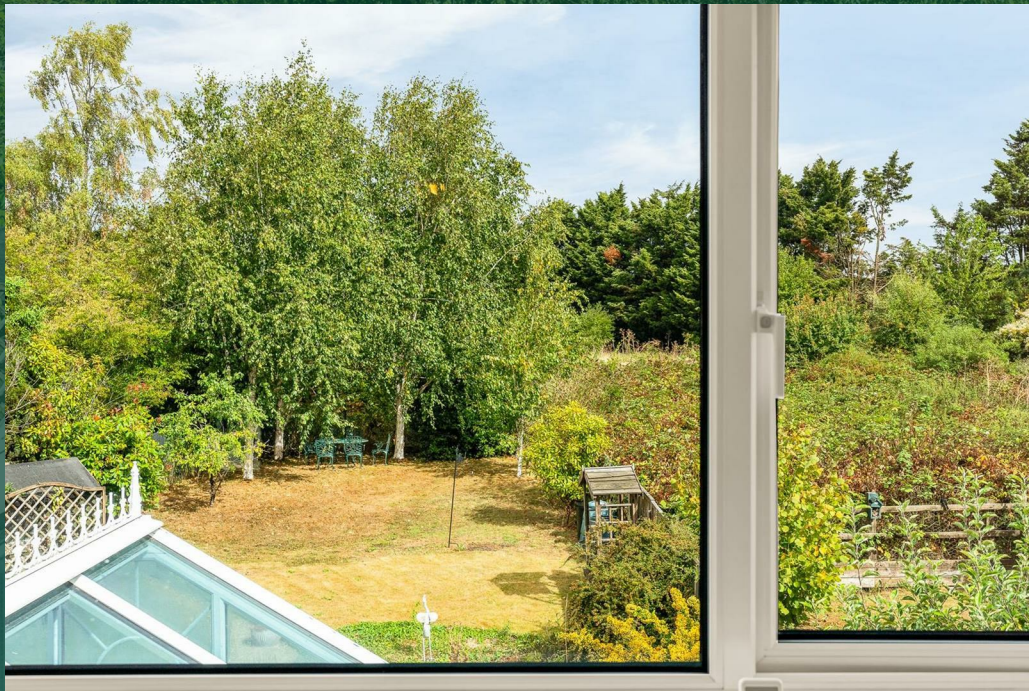
# Godfries Close

Tewin, AL6 0LQ

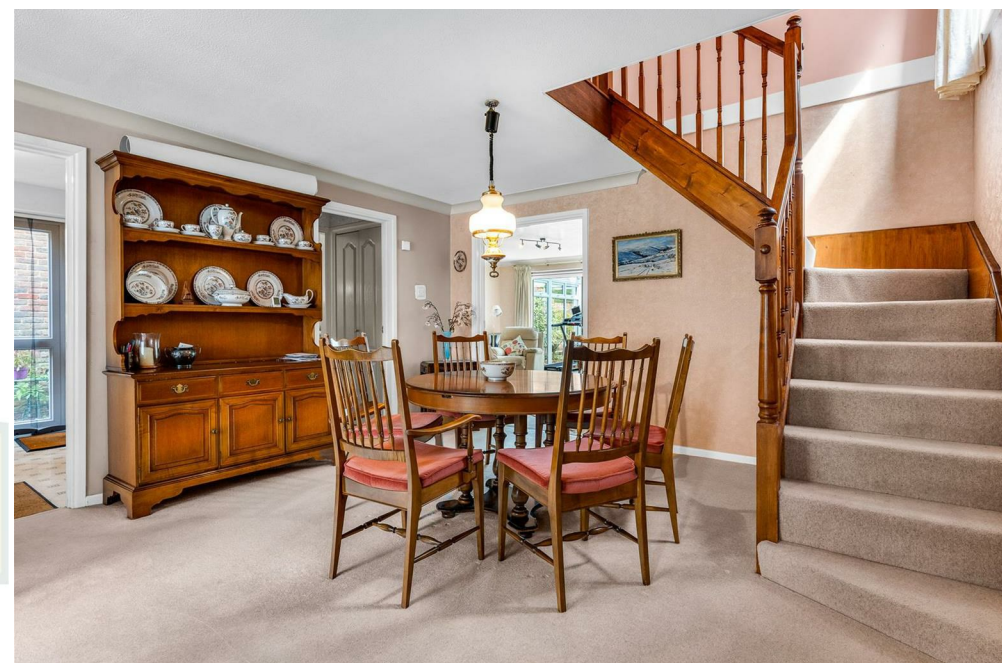
## Summary

### Summary:

Bryan Bishop and Partners are delighted to bring to the market this lovely four bedroom, two bathroom family home set in a quiet residential cul de sac in the extremely popular village of Tewin. This modern detached property enjoys a generous plot with a double garage and plenty of off street parking to the front and a charming garden of considerable length to the rear, adjoined by a full width conservatory/garden room. With a downstairs cloakroom, office and spacious, flexible living space, this house represents a fantastic opportunity to acquire your forever home in one of Hertfordshire's most sought after village locations.







Energy Efficiency Rating		
	Current	Potential
Very energy efficient - lower running costs		
(92 plus) <b>A</b>		
(81-91) <b>B</b>		
(69-80) <b>C</b>		
(55-68) <b>D</b>		
(39-54) <b>E</b>		
(21-38) <b>F</b>		
(1-20) <b>G</b>		
Not energy efficient - higher running costs		
<b>England &amp; Wales</b> EU Directive 2002/91/EC		





**Bryan Bishop**  
*and partners*

6a High Street | Welwyn | AL6 9EG | 01438 718877 | [info@bryanbishop.co.uk](mailto:info@bryanbishop.co.uk) | [www.bryanbishop.co.uk](http://www.bryanbishop.co.uk) Find us on

