



**Bryan Bishop**  
*and partners*

**Watton Road**  
**Datchworth, SG3 6RS**

# Watton Road

## Datchworth, SG3 6RS

### Summary

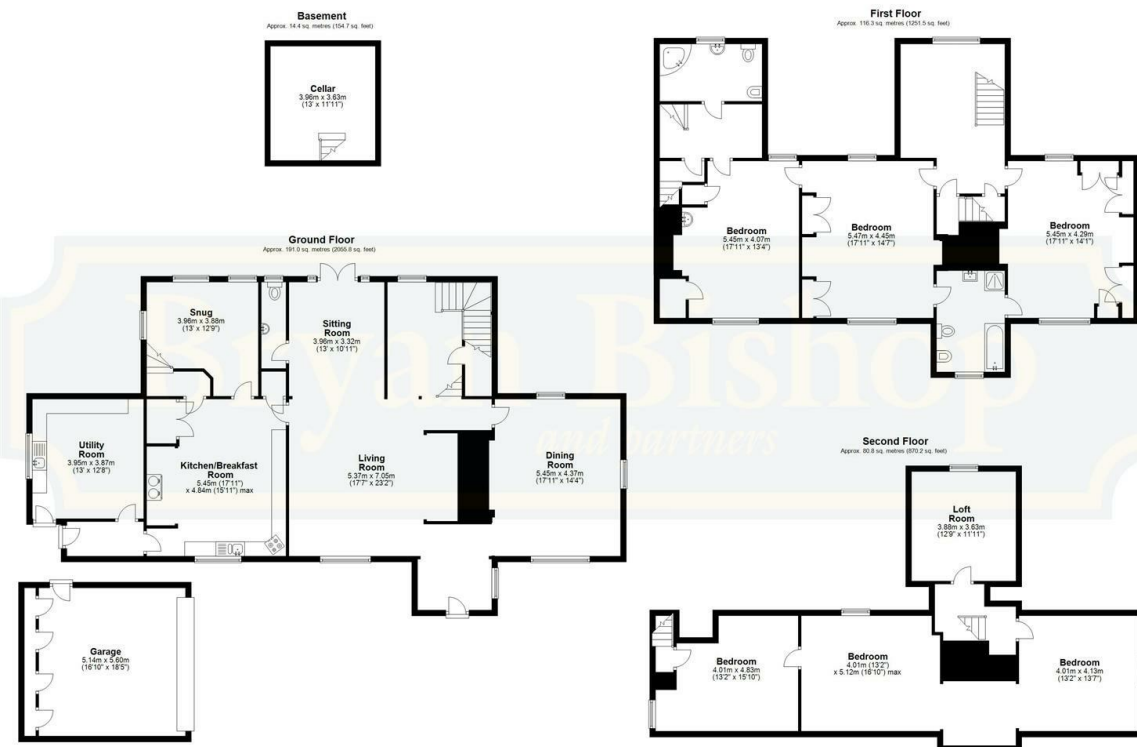
#### Summary:

Bryan Bishop and Partners are delighted to bring to the market this enchanting Grade II listed building in the ever popular Hertfordshire village of Datchworth. Ranged across three main floors plus an additional cellar room this is an incredible opportunity to own a fascinating piece of Hertfordshire history, much of which has mercifully been preserved intact due to the listing by Historic England. Originally dating from 1640, with a number of alterations and improvements in the decades that followed, including an early 18th century open well staircase, this property exudes charm and authentic period character from every timber. Six bedrooms occupy the first and second floor, ably served by two bathrooms, with the expansive ground floor providing flexible and visually stunning space just perfect for family life as well as being a glorious and enviable home in which to entertain.

#### Accommodation:

The solid oak front door opens into an inner lobby that divides around a double sided chimney of truly impressive proportions. To the left is a wonderful living room, nicely lit by a front facing window and ready to be warmed by an open inglenook fireplace. This was clearly a substantial house built and further enhanced by owners of wealth and some local importance. The footprint is large and its clear to see that every aspect, including the staircases, are built to be spacious and suitably lavish as befits the owner's standing in the community. This means there is a wonderful openness to the whole house, with multiple short flights of stairs leading to other interesting levels throughout. A charming feature that brings architectural and spacial interest to every corner, further enhanced by an occasional wall being stripped back, leaving the exposed structural beams on view.





Total area: approx. 402.5 sq. metres (4332.2 sq. feet)





**Bryan Bishop**  
*and partners*

6a High Street | Welwyn | AL6 9EG | 01438 718877 | [info@bryanbishop.co.uk](mailto:info@bryanbishop.co.uk) | [www.bryanbishop.co.uk](http://www.bryanbishop.co.uk) Find us on

