



**Bryan Bishop**  
*and partners*

**Osborne Gardens**  
Little Heath, EN6 1RS



# Osborne Gardens

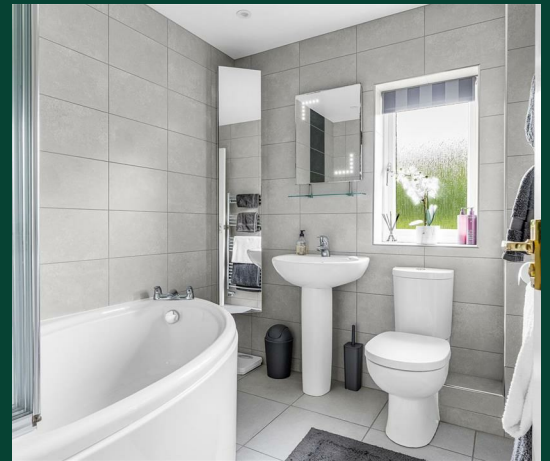
Little Heath, EN6 1RS





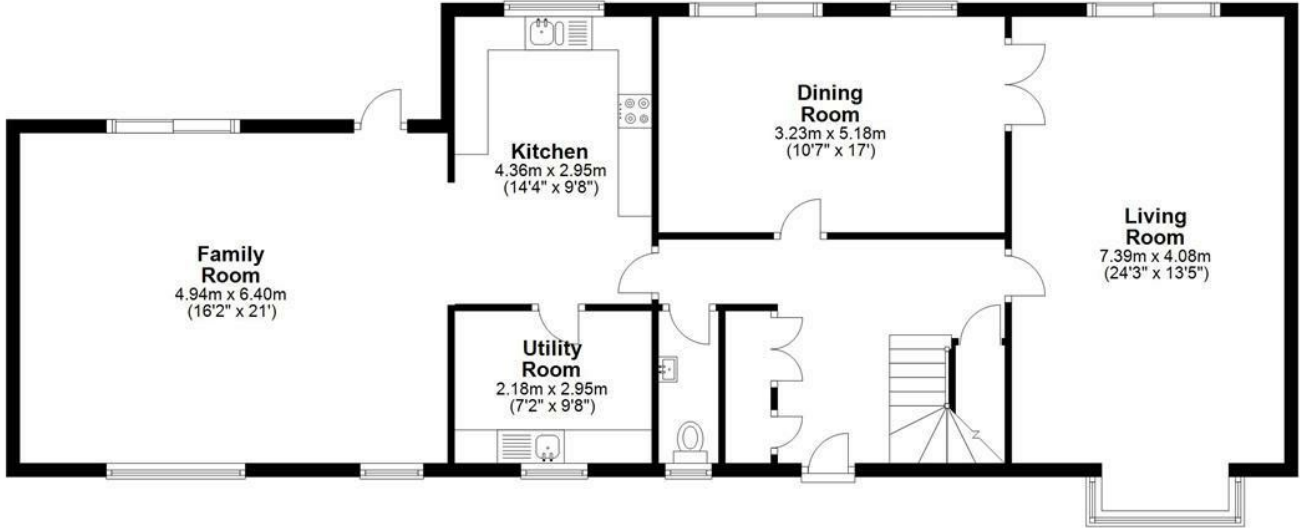






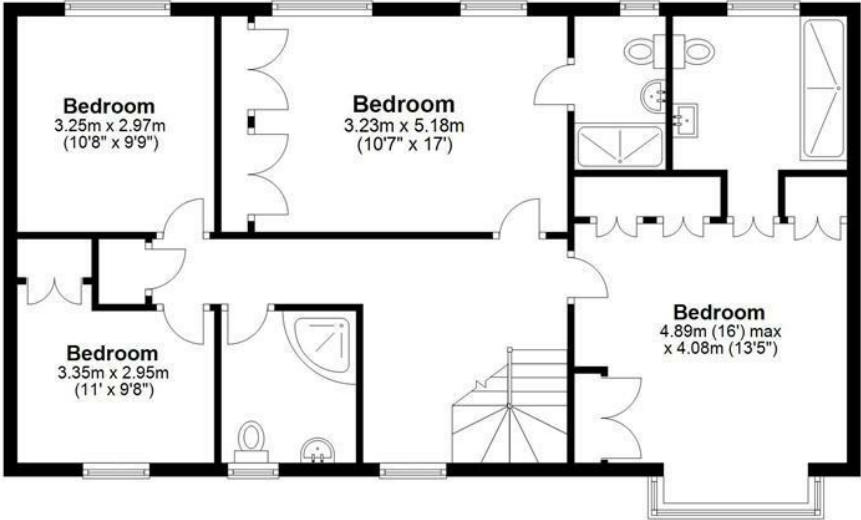
**Ground Floor**

Approx. 115.6 sq. metres (1243.9 sq. feet)



**First Floor**

Approx. 83.2 sq. metres (896.1 sq. feet)



Total area: approx. 198.8 sq. metres (2140.0 sq. feet)

Energy Efficiency Rating		Current	Potential
Very energy efficient - lower running costs			
(92 plus) <b>A</b>			
(81-91) <b>B</b>			
(69-80) <b>C</b>		69	78
(55-68) <b>D</b>			
(39-54) <b>E</b>			
(21-38) <b>F</b>			
(1-20) <b>G</b>			
Not energy efficient - higher running costs			
<b>England &amp; Wales</b>		EU Directive 2002/91/EC	











**Bryan Bishop**  
*and partners*

6a High Street | Welwyn | AL6 9EG | 01438 718877 | [info@bryanbishop.co.uk](mailto:info@bryanbishop.co.uk) | [www.bryanbishop.co.uk](http://www.bryanbishop.co.uk) Find us on

