



Bryan Bishop
and partners

Green Close
Brookmans Park, AL9 7ST



Green Close

Brookmans Park, AL9 7ST







- First Floor -

Hallway

Living Room

Kitchen/Dining Room

Balcony

Bedroom One

En-suite

Bedroom Two

Bathroom

- Exterior -

Garage

19'2" x 15'11"

10'0" x 18'3"

5'0" x 16'8"

12'3" x 11'7"

10'2" x 9'0"

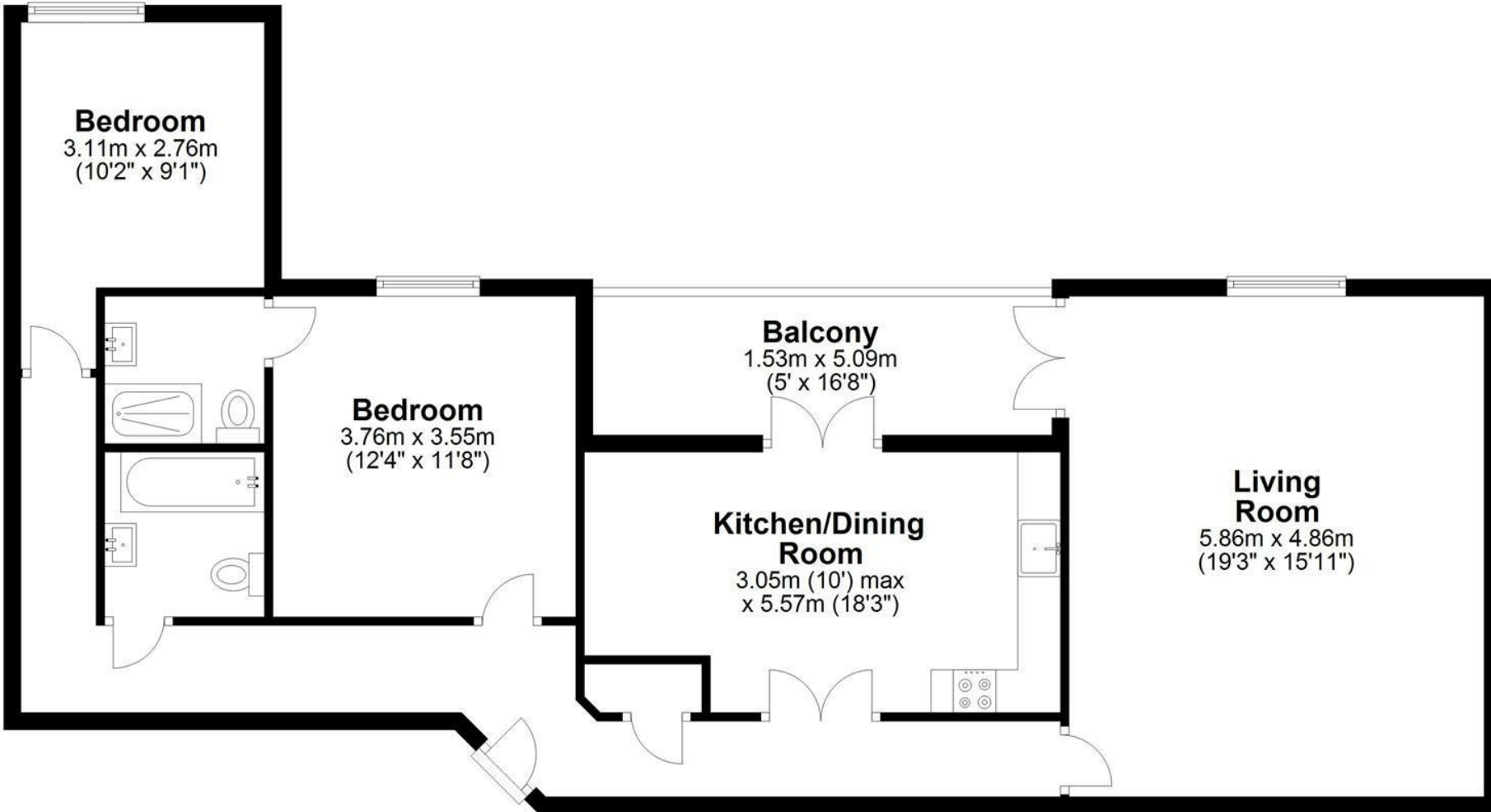






First Floor

Approx. 93.2 sq. metres (1002.7 sq. feet)



Total area: approx. 93.2 sq. metres (1002.7 sq. feet)

Energy Efficiency Rating

	Current	Potential
Very energy efficient - lower running costs		
(92 plus) A		
(81-91) B	83	83
(69-80) C		
(55-68) D		
(39-54) E		
(21-38) F		
(1-20) G		
Not energy efficient - higher running costs		

England & Wales

EU Directive 2002/91/EC





Bryan Bishop
and partners

6a High Street | Welwyn | AL6 9EG | 01438 718877 | info@bryanbishop.co.uk | www.bryanbishop.co.uk Find us on

