



Bryan Bishop
and partners

Bramfield Road
Datchworth, SG3 6RX



Bramfield Road

Datchworth, SG3 6RX

Outside

The property is approached via a private drive from Bramfield Rd leading to a pair of remote control iron gates which open in to a large driveway with ample parking and a detached double garage. The gardens are a special feature of Lismore and it has a lovely open aspect across sweeping lawns which stretch all the way to the boundary, interspersed with a wide variety of ornamental trees and shrubs, a small copse gives additional seclusion and a great place for children to explore and there is a west facing summerhouse and two timber garden sheds. Ideal for those wanting privacy and peace and quiet and yet easy access to major road and rail communications.

Location

The location of this property is ideal for those wishing to commute; Knebworth and Stevenage main line railway stations are within 10 minutes' drive, the A1(M) and A10 can be reached at Welwyn and Hertford respectively, whilst access to Heath Mount and Haileybury independent schools is at Watton at Stone and Hertford Heath a short drive to the East. Also, nearby are many bridle paths and footpaths, a local general store and 2 public houses.

Tenure

Freehold

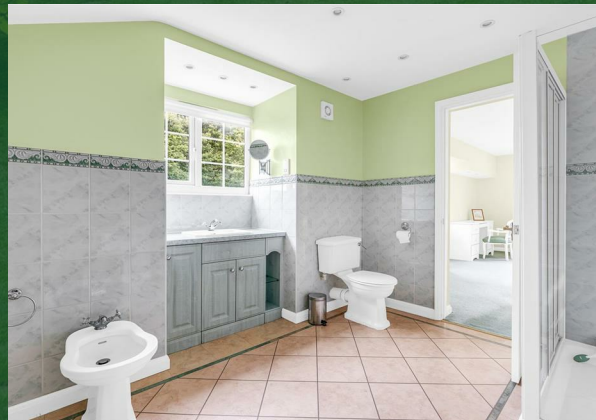
Services

Mains water, Gas and electricity, mains drainage.

Rating Authority East Herts District Council Tel: 01279 65526





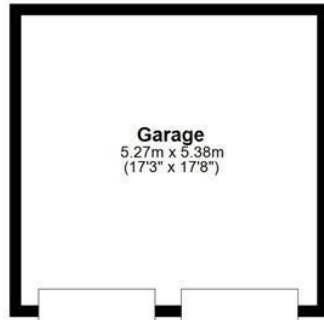






Ground Floor

Approx. 211.4 sq. metres (2275.2 sq. feet)

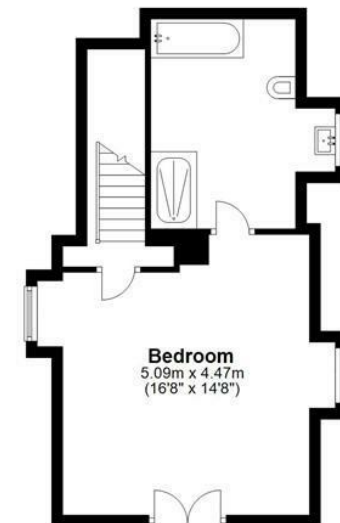


Garage
5.27m x 5.38m
(17'3" x 17'8")



First Floor

Approx. 38.6 sq. metres (415.2 sq. feet)



Bedroom
5.09m x 4.47m
(16'8" x 14'8")

Total area: approx. 249.9 sq. metres (2690.4 sq. feet)









Bryan Bishop
and partners

6a High Street | Welwyn | AL6 9EG | 01438 718877 | info@bryanbishop.co.uk | www.bryanbishop.co.uk Find us on

