



Bryan Bishop
and partners

Firs Walk
Tewin, AL6 0NY



Firs Walk

Tewin, AL6 0NY

A Fine-looking 6 bedroom detached house on a superb sunny plot of just under half an acre, in a quiet private road well placed for the access to highly reputable independent schools, including Heath Mount and Haileybury..

Number 33 Firs Walk has been the family home of the current owners for many years, it sits centrally on a plot approaching half an acre and faces south to the rear. The property is approached via an impressive carriage drive with parking for several cars, there is also an integral garage with internal access to small lobby next to the kitchen. From the main drive is a door to a large, enclosed porch and panelled oak front door to a spacious reception hall with parquet flooring and stairs to upper floors. Off the hall is a cloakroom with WC, and door to a separate dining room with parquet floor, next to this is the main drawing room which has triple aspect windows, an open fireplace with gas coals, and to the rear the room opens into a double glazed conservatory which has double doors onto the rear garden. The kitchen and family room are also located at the rear of the house and operate as one large room. There is a range of fitted storage cupboards, a Westahl gas cooking range, dishwasher, American style fridge/freezer and microwave oven, the family room has a double glazed conservatory addition and opens on to the garden. Door to rear lobby with Utility Room and access to garage.

On the first floor is a bright and spacious galleried landing, a master bedroom suite of, separate dressing room, bedroom with a range of additional wardrobes and a large en suite bathroom, with panelled bath, WC, wash basin, bidet and shower cubicle. There are 3 further double bedrooms all with fitted wardrobes and a family bathroom with jacuzzi bath, WC, wash basin and shower cubicle. From the landing is another staircase to a second floor galleried landing, leading to 2 double bedrooms with plenty of eaves storage, served by a shower room.

This property has a particularly lovely garden which comprises a patio backing onto the house with brick retaining wall, steps up to a large main lawn stretching to the far end of the plot, to one side is an attractive ornamental pond with rockery, a gravel path extends one side and gives access to a detached Cedar Chalet approx. 20 x 12 feet, it is double glazed and has windows to 3 sides, it would make an ideal home office or studio. The whole of the rear garden is very private and screened by mature hedges and ornamental trees and shrubs and there is paved access either side of the house leading to the front drive and garden. All mains services are connected to the property and there is a small, yearly service charge which covers maintenance of the private road.







GROUND FLOOR

- Lobby
- Entrance Hall
- Kitchen
- Sitting Room
- Conservatory
- Utility
- Dining Room
- Cloakroom
- Living Room
- Conservatory

FIRST FLOOR

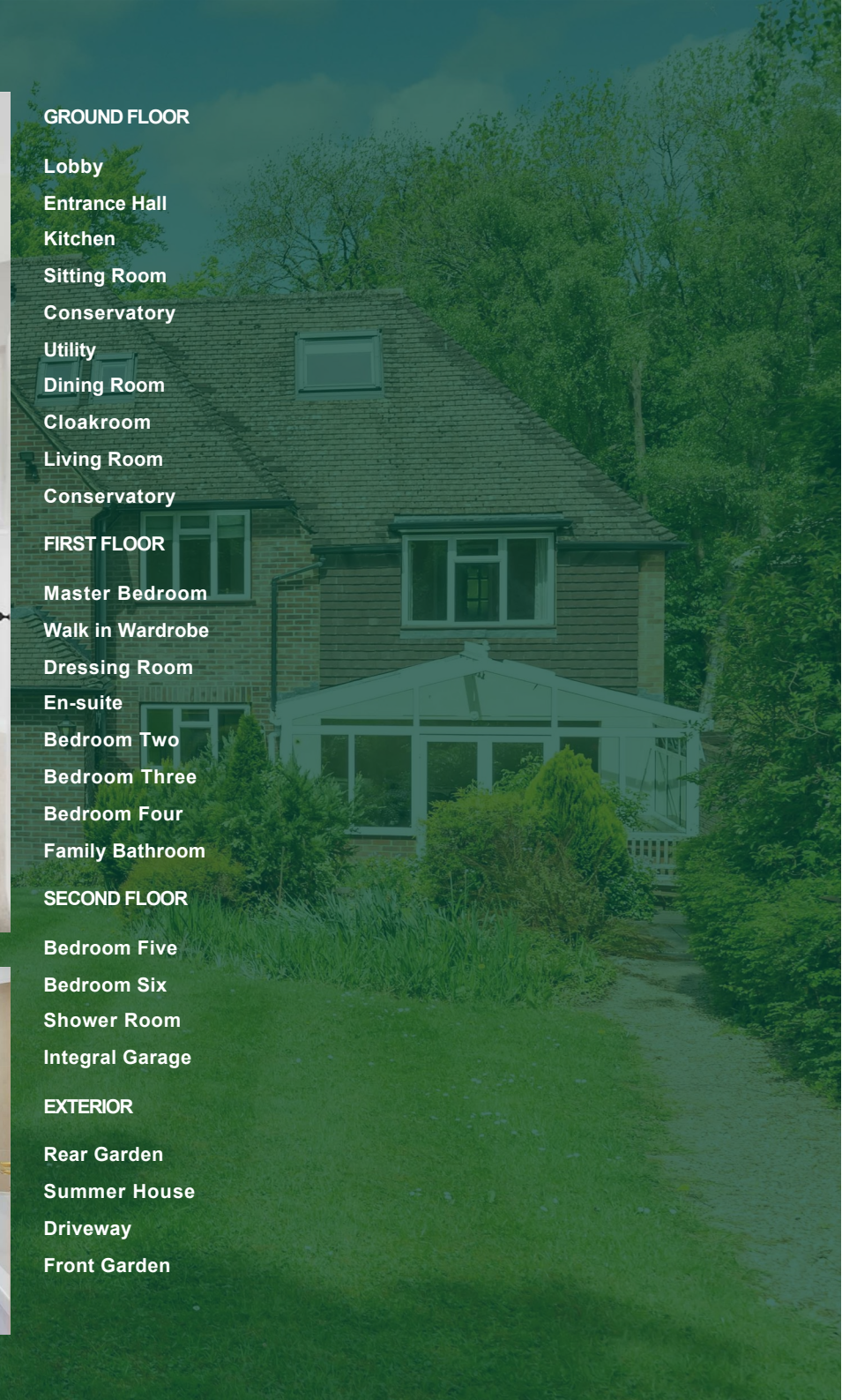
- Master Bedroom
- Walk in Wardrobe
- Dressing Room
- En-suite
- Bedroom Two
- Bedroom Three
- Bedroom Four
- Family Bathroom

SECOND FLOOR

- Bedroom Five
- Bedroom Six
- Shower Room
- Integral Garage

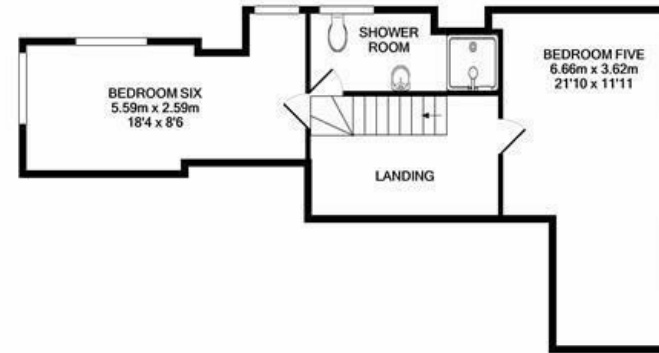
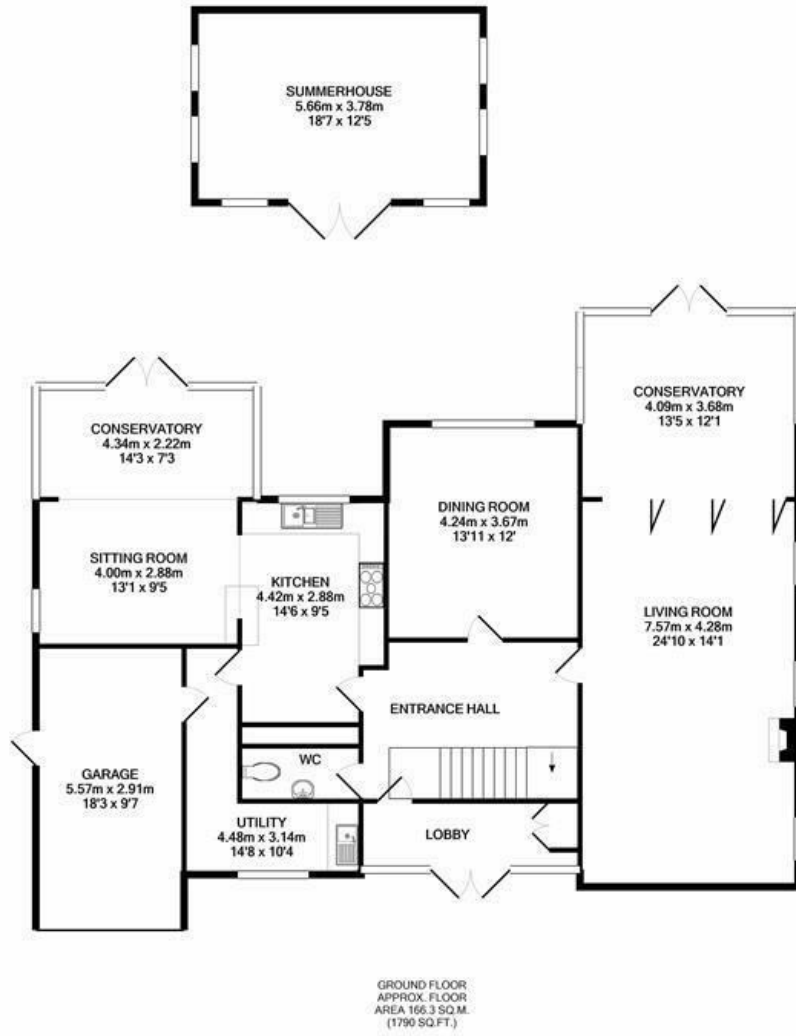
EXTERIOR

- Rear Garden
- Summer House
- Driveway
- Front Garden





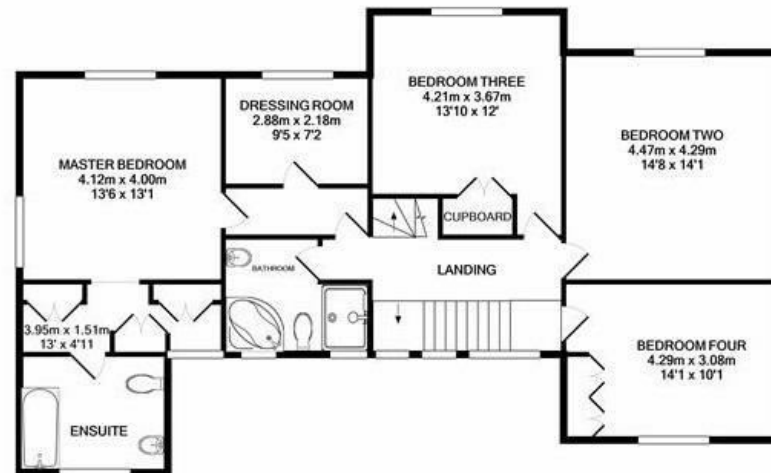




2ND FLOOR
APPROX. FLOOR
AREA 49.5 SQ.M.
(533 SQ.FT.)

TOTAL APPROX. FLOOR AREA 318.3 SQ.M. (3427 SQ.FT.)

Whilst every attempt has been made to ensure the accuracy of the floor plan contained here, measurements of doors, windows, rooms and any other items are approximate and no responsibility is taken for any error, omission, or mis-statement. This plan is for illustrative purposes only and should be used as such by any prospective purchaser. The services, systems and appliances shown have not been tested and no guarantee as to their operability or efficiency can be given.
Made with Metropix 02022



1ST FLOOR
APPROX. FLOOR
AREA 102.5 SQ.M.
(1104 SQ.FT.)









Bryan Bishop
and partners

6a High Street | Welwyn | AL6 9EG | 01438 718877 | info@bryanbishop.co.uk | www.bryanbishop.co.uk Find us on

