



Bryan Bishop
and partners

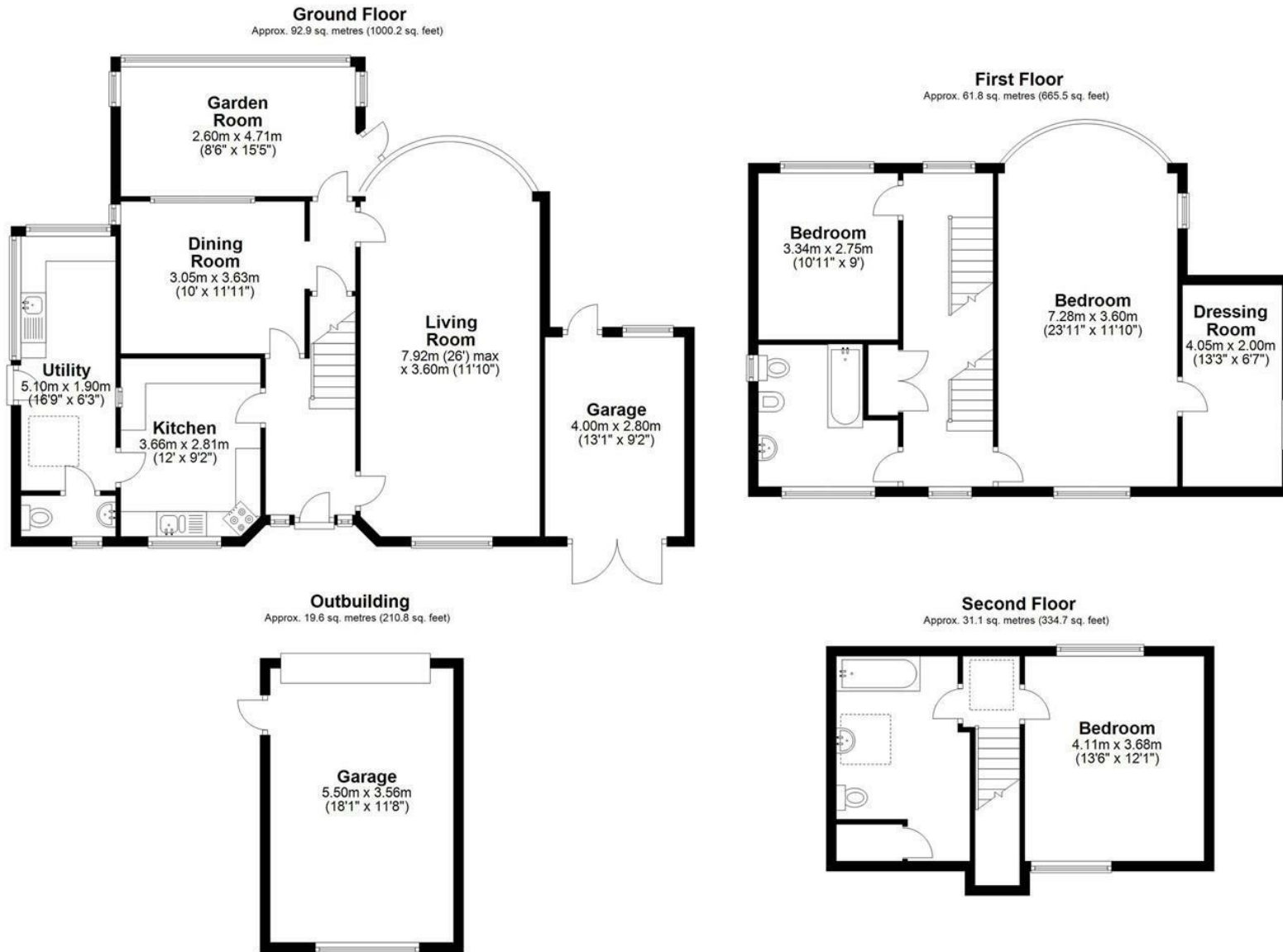
Water End Lane
Ayot St. Peter, AL6 9BB

Guide price £1,250,000

Water End Lane

Ayot St. Peter, AL6 9BB





Total area: approx. 205.4 sq. metres (2211.2 sq. feet)

FOR ILLUSTRATIVE PURPOSES ONLY. NOT TO SCALE

Whilst every attempt has been made to ensure the accuracy of the floor plan shown, all measurements, positioning, fixtures, features, fittings and any other data shown are an approximate interpretation for illustrative purposes only and are not to scale. No responsibility is taken for any error, omission, miss-statement or use of data shown.

Bryan Bishop
and partners

6a High Street | Welwyn | AL6 9EG | 01438 718877 | info@bryanbishop.co.uk | www.bryanbishop.co.uk Find us on

