



Bryan Bishop
and partners

**The Avenue
Welwyn**



The Avenue

Welwyn
Hertfordshire

An Immensely impressive, detached home with an eye catching interior and layout suited to modern day living, standing in gardens and grounds of 1.6 acres.

Property

27 The Avenue lies just one mile to the north east of Welwyn Village, it is by any standards an exceptional house, beautifully appointed throughout, at the centre of which is a huge, open plan living/dining/kitchen with central feature fireplace and bi fold doors opening onto a superb Limestone sun terrace which faces south. The kitchen has a wide range of high-gloss storage units, incorporating a range of Miele appliances to include, double oven, microwave, coffee maker, induction hob, fridge/freezer and dishwasher. There is a walk-in pantry, a drinks station with glass doors and two wine coolers. From the kitchen is access to a cloakroom with WC and sink and a separate utility room with plumbing for washing machine, space for tumble dryer and a door to outside.

Located off the kitchen is spectacular family room with vaulted, white beamed ceiling and full-length picture windows overlooking the garden. Throughout the property is underfloor central heating and high-quality replacement double glazed windows and doors, the flooring is a combination of limestone to the living areas and Karndean to bedrooms and hall. There are 4 bedrooms on the ground floor, two have en suite showers and there is a separate family bathroom serving the other bedrooms. The first floor is dedicated to a superb master bedroom suite with glazed sliding doors onto a large seating balcony with glass balustrade. There is a luxurious en suite bathroom, with double ended bath, WC, walk in shower stall, double width sink, walk in dressing area and a 2-berth sauna adjoining the bedroom.







Outside

The house lends itself to outdoor entertaining and the gardens have been professionally landscaped to include, a large limestone paved terrace providing ample space for this purpose, there are steps up to lawn, flanked by a well-stocked and terraced border and beyond this, a summerhouse and access to a fenced paddock of approximately one acre.

A detached, purpose-built annex is situated just below the sun terrace and comprises a kitchenette, living and dining area, bedroom and shower room. This makes an ideal space for a home office or guest accommodation. Beyond this is a lightly wooded area with pathways and play areas for children and it links up with the main lawn. To the front of the house is a large, paved driveway with parking for several cars and double entrance gates provide access from The Avenue. All mains services are connected.

Location

Oaklands is a highly regarded residential area, situated approx. 1 mile from Welwyn. There is a parade of shops, a JMI school and a good choice of independent and secondary schools with Coach pick-up point ready. Also, there is a popular pub/restaurant within walking distance of the property. More extensive facilities are to be found in Welwyn and Welwyn Garden City, 3 miles to the south. Major transportation links are close by at both the A1(M) junction 6 and Welwyn North mainline train station (London Kings Cross 29 minutes) and more extensive shopping and leisure facilities can be found a short drive away in Welwyn Garden City.

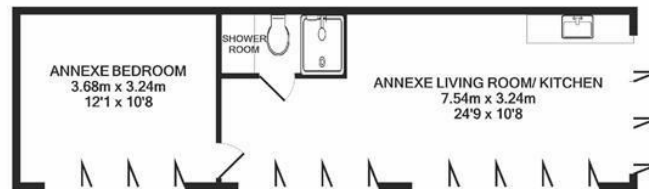








Ground floor and 1st floor total area approx 2189.6 sq. feet (203.4 sq.m.)

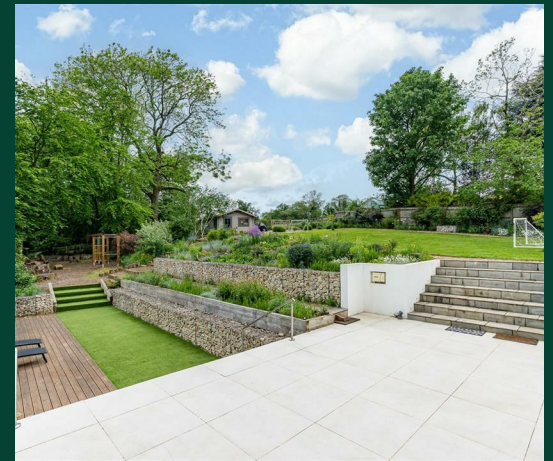


Annexe total approx floor area 391 sq. feet (36.4 sq.m.)

Whilst every attempt has been made to ensure the accuracy of the floor plan contained here, measurements of doors, windows, rooms and any other items are approximate and no responsibility is taken for any error, omission, or mis-statement. This plan is for illustrative purposes only and should be used as such by any prospective purchaser. The services, systems and appliances shown have not been tested and no guarantee as to their operability or efficiency can be given.
Made with Metropix ©2021

TOTAL FLOOR AREA APPROX 2580.6 SQ.FEET (239.8 SQ.M.)









Bryan Bishop
and partners

6a High Street | Welwyn | AL6 9EG | 01438 718877 | info@bryanbishop.co.uk | www.bryanbishop.co.uk Find us on

