



**Bryan Bishop**  
*and partners*

**Mill Lane**  
**Welwyn, AL6 9EY**  
**Price guide £450,000**



# Mill Lane

## Welwyn, AL6 9EY

### Summary

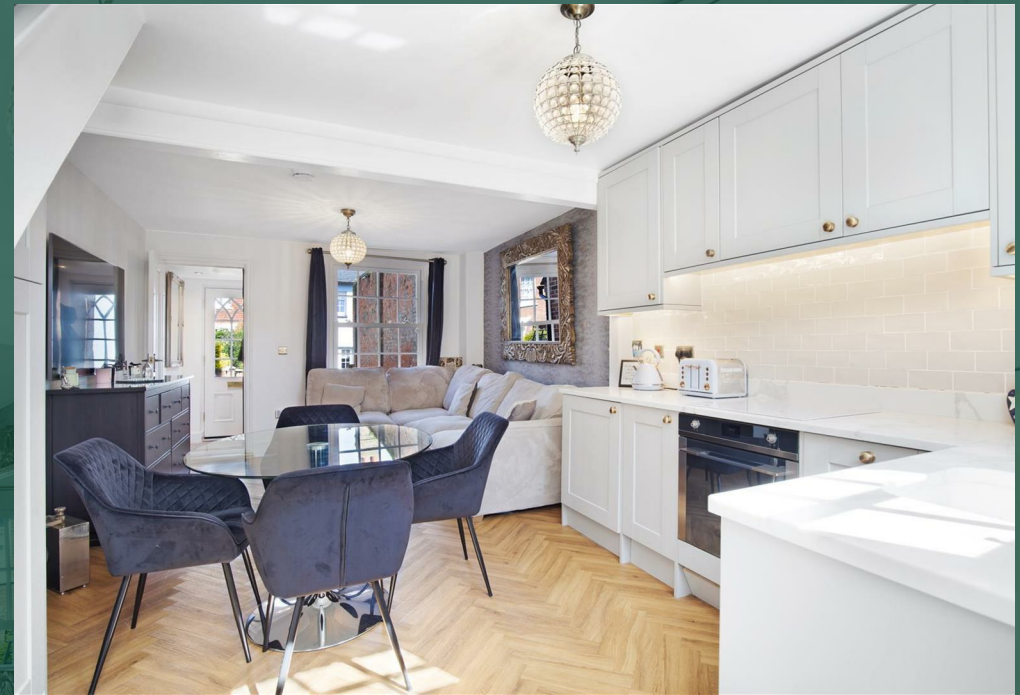
Sympathetically refurbished Victorian semi-detached cottage with a stunning feature wall lined two car driveway. Tucked away in a quiet side road within the heart of Welwyn Village. Built in the 1900s, this property provides the perfect combination of character and modern design. The accommodation comprises entrance hall, living room, refitted kitchen with a stable door leading to the rear courtyard.

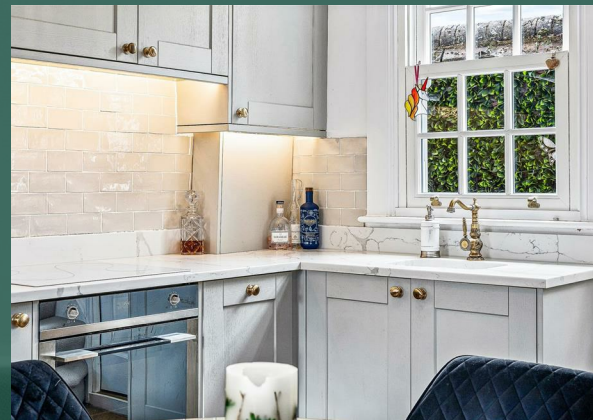
On the first floor lies the master bedroom and a luxury re-fitted four piece bathroom suite comprising a roll top bath, high level traditional WC and separate shower cubicle with exquisite detailed brass fittings.. On the top floor lies the second bedroom, which can be used as a double bedroom, and having advantage of useful eaves storage and exposed brick work.

The property was completely refurbished in 2019 by adding a new modern fully fitted kitchen, new four piece bathroom suite, new carpets, brand new double glazed sash windows and door, flooring and painting throughout. Externally, the property offers a courtyard garden to the front which can also be used as off street parking (two cars). There is also a small courtyard garden to the rear of the property.

### Location:

The Village boasts a fine range of boutique shops, three restaurants, six pub/restaurants, Tesco Express and a doctor's surgery. Transportation links are on hand with A1(M) junction 6 within half a mile and Welwyn North station 1.5 miles distant (London Kings Cross 20 minutes by fast train).





## GROUND FLOOR

Entrance

Kitchen/Diner/Living

Kitchen/Dining Area

Living Room

## FIRST FLOOR

Landing

Bedroom One

Family Bathroom

## SECOND FLOOR

Bedroom Two

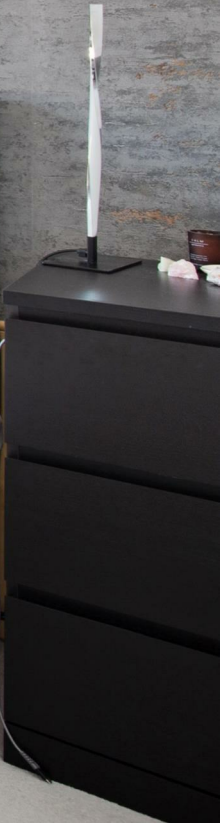
## EXTERIOR

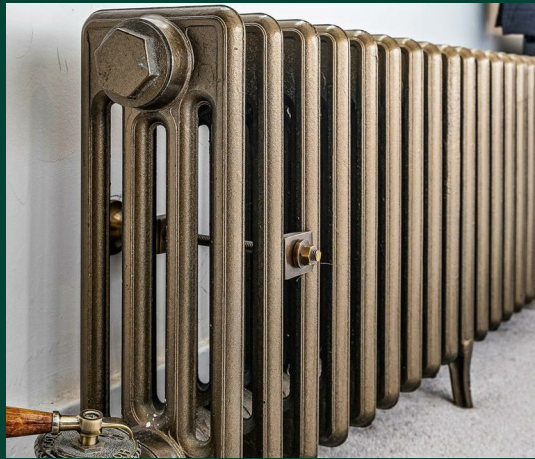
Back Courtyard

Front Courtyard

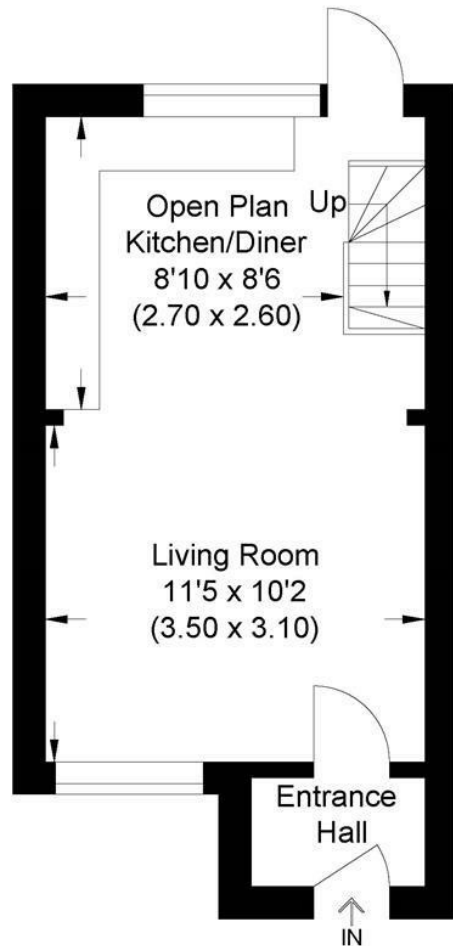
Two Car Driveway



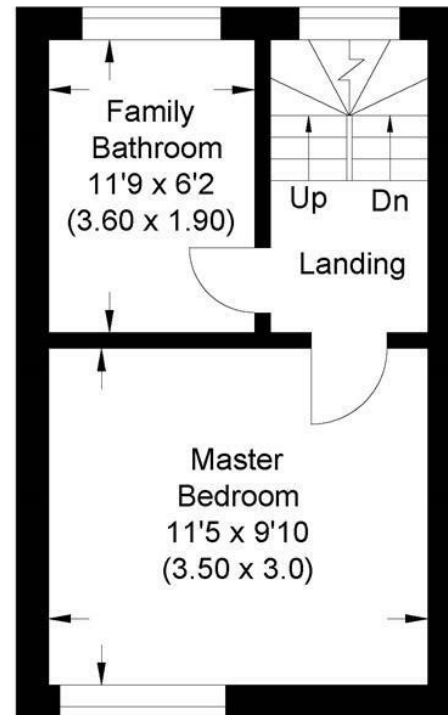




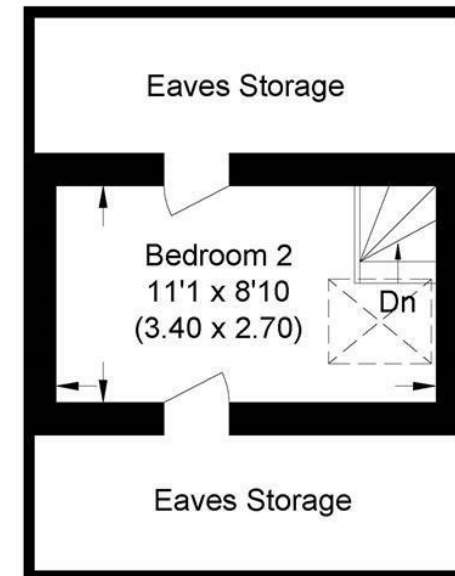
Approximate Gross Internal Area  
50.49 sq m / 543.46 sq ft  
(Excludes Eaves Storage)



Ground Floor



First Floor



Second Floor

Illustration for identification purposes only, measurements are approximate, not to scale.

# Bryan Bishop *and partners*

