

T AGREED



Bryan Bishop
and partners

Sevenacres
Tewin, AL6 0FD

£3,250 Per month



White kitchen cabinet with built-in oven and microwave.

Stainless steel range hood.

White upper kitchen cabinets.

Window with white blinds and a chrome faucet.

White lower kitchen cabinets and a tall white cabinet on the right.

White and grey patterned curtain hanging from a metal rod.

Wooden door with a silver handle.

Wooden door with a silver handle, partially open.

Built-in oven and microwave.

Gas cooktop.

White electric kettle on the countertop.

Electrical outlet on the wall.

Recessed ceiling light.

Recessed ceiling light.

Recessed ceiling light.

Recessed ceiling light.

Recessed ceiling light.

Sevenacres

Tewin, AL6 0FD

A wonderful five bedroom, three bathroom modern family home with two spacious reception rooms and a kitchen/breakfast room with a range of base and eye level units, complete with integrated dishwasher, washing machine, fridge/freezer and oven with hob. Further to the ground floor is a cloakroom, integral garage and large storage cupboard.

On the first floor there are four great sized rooms three of which are served by a family bathroom. The largest room has fitted wardrobes and an en-suite shower room. To the second floor is a Master suite with fitted/walk through wardrobe area and en-suite bathroom facilities.

The house is situated in a private gated development, walking distance to two pub restaurants and a village shop. There is an attractive village green and many idyllic countryside walks. Welwyn North train line is a 3 minute drive and has superb links into London's Kings Cross. There are two pleasant market towns within a 10 minute drive, Hertford and Welwyn Garden City.

The property is offered unfurnished and immediately available.







GROUND FLOOR

Entrance Hallway
Living Room
Kitchen/Dining Room
Family Room
Cloakroom
Integral Garage

FIRST FLOOR

First Floor
Landing
Bedroom Two
En-suite
Bedroom Three
Bedroom Four
Bedroom Five

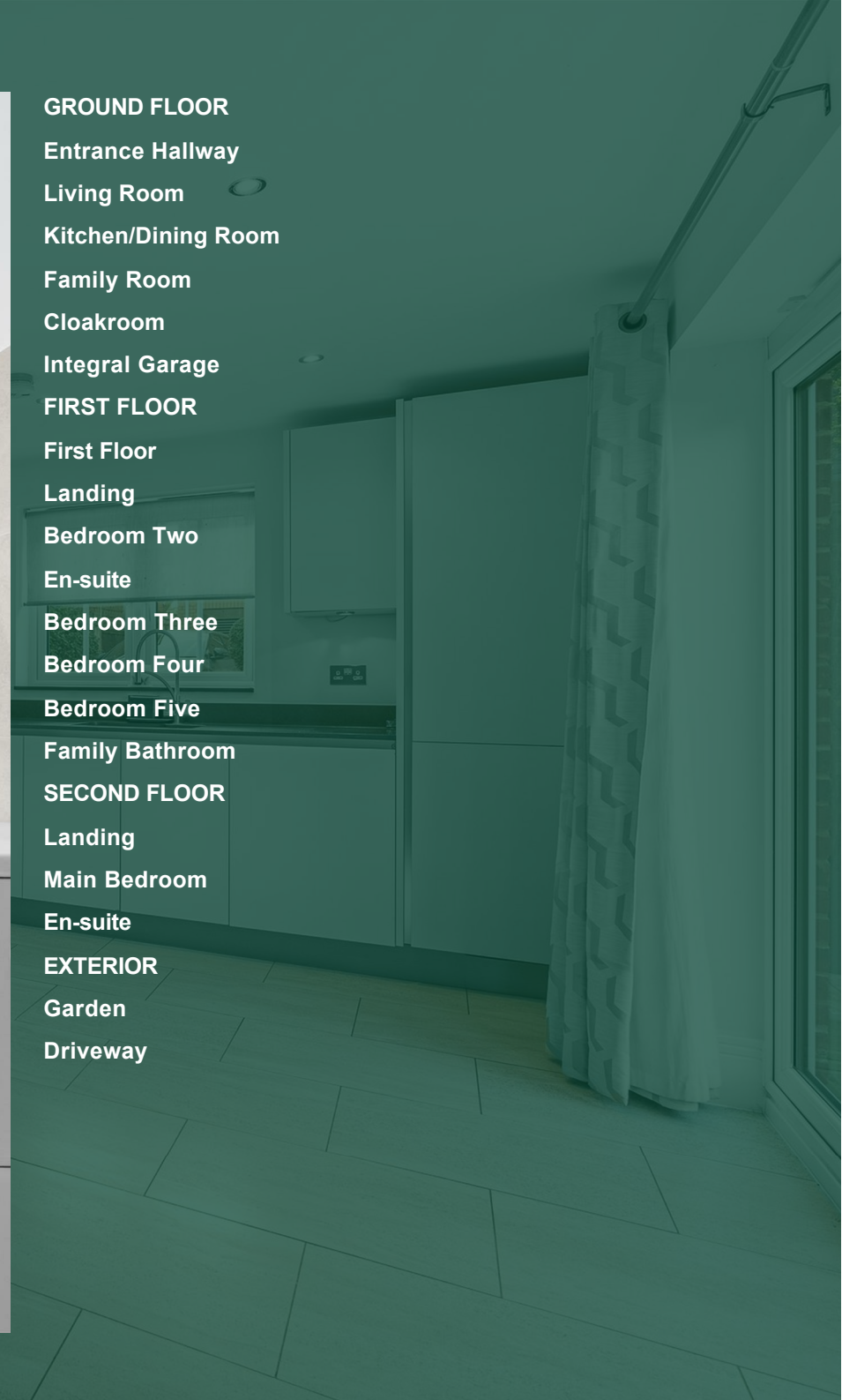
Family Bathroom

SECOND FLOOR

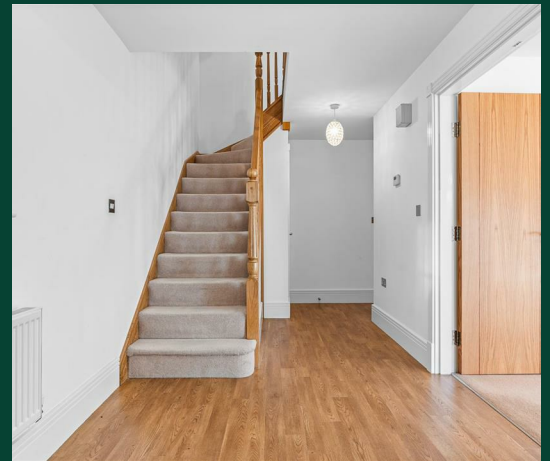
Landing
Main Bedroom
En-suite

EXTERIOR

Garden
Driveway









Total area: approx. 227.2 sq. metres (2445.5 sq. feet)

FOR ILLUSTRATIVE PURPOSES ONLY. NOT TO SCALE

Whilst every attempt has been made to ensure the accuracy of the floor plan shown, all measurements, positioning, fixtures, features, fittings and any other data shown are an approximate interpretation for illustrative purposes only and are not to scale. No responsibility is taken for any error, omission, miss-statement or use of data shown.







Bryan Bishop
and partners

