

LET AGREED



Bryan Bishop
and partners

New Road
Digswell, AL6 0AL

£4,500 Per month



New Road

Digswell, AL6 0AL

Bryan Bishop and Partners are pleased to bring to the market this immaculately finished no expense spared four double bedroom family home situated at the top of New Road, a sought-after road in Digswell. Offering 3620 square feet of living space and sitting on a half acre plot and is just a short five-minute walk to Welwyn North station which offers a quick line into London's Kings Cross.

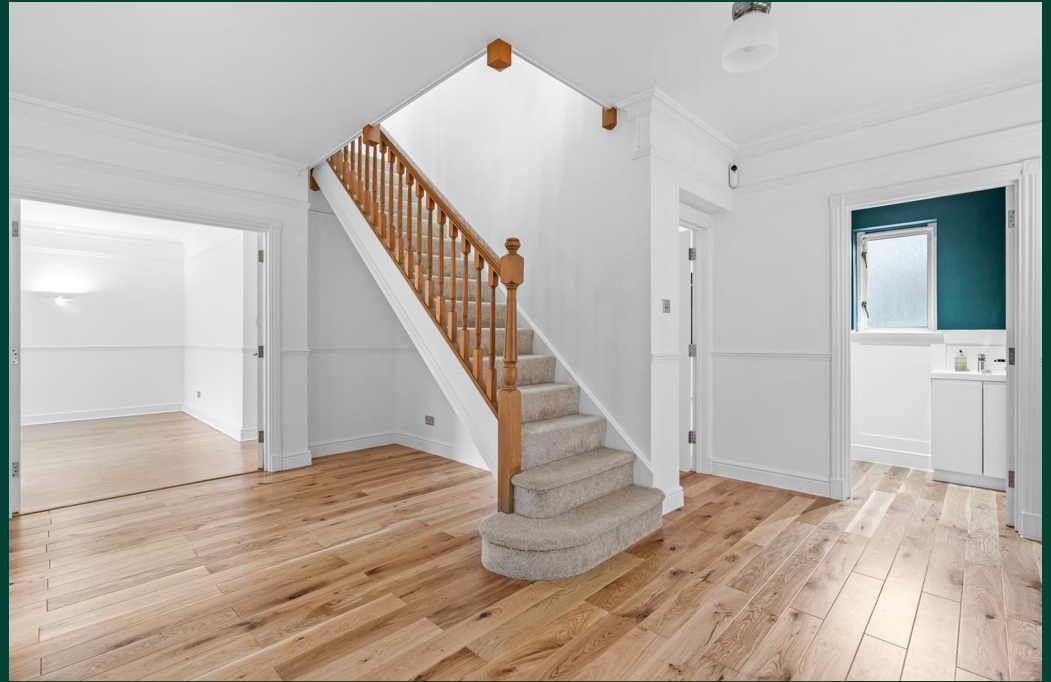
The ground floor welcomes you with a spacious open entrance hall, leading to a well-lit living room featuring a gas fire and French doors to the rear patio. Adjacent is a convenient office/study, and a downstairs cloakroom for added practicality. The large dining room effortlessly connects to the open-plan kitchen breakfast room, boasting ample natural light, integrated appliances, and abundant storage through the many base and eye level units.

Ascend to the first floor via a generously sized landing illuminated by Velux windows. Bedrooms Two and Three are generously proportioned, each enjoying three-piece En-Suites. With bedroom Three offering delightful views over the rear garden. The principal bedroom is flooded with natural light and provides views over the front and rear via the dual aspect windows, completing this space is a large four-piece En-Suite. A fourth bedroom, versatile in function, could serve as an additional study or office, featuring convenient eaves storage.

Outside, the property boasts a north-west orientated garden backing onto a charming woodland area. The private five-car driveway, accessible through electric gates, is complimented by the large three-car garage. This property harmoniously blends spacious living, natural light, and practical amenities for a comfortable and inviting home.

Digswell offers a local shop, café, two pub/restaurants within walking distance, Welwyn North station. Additional amenities are available from Welwyn Village and Welwyn Garden City, both within a 5-minute drive.







GROUND FLOOR

Entrance Hall	14'3" x 16'0"
Study	12'1" x 7'10"
Family Room	20'6" x 14'9"
Living Room	23'11" x 16'6"
Kitchen/Dining Room	21'0" x 24'2"
Utility	9'4" x 9'9"
W.C	

FIRST FLOOR

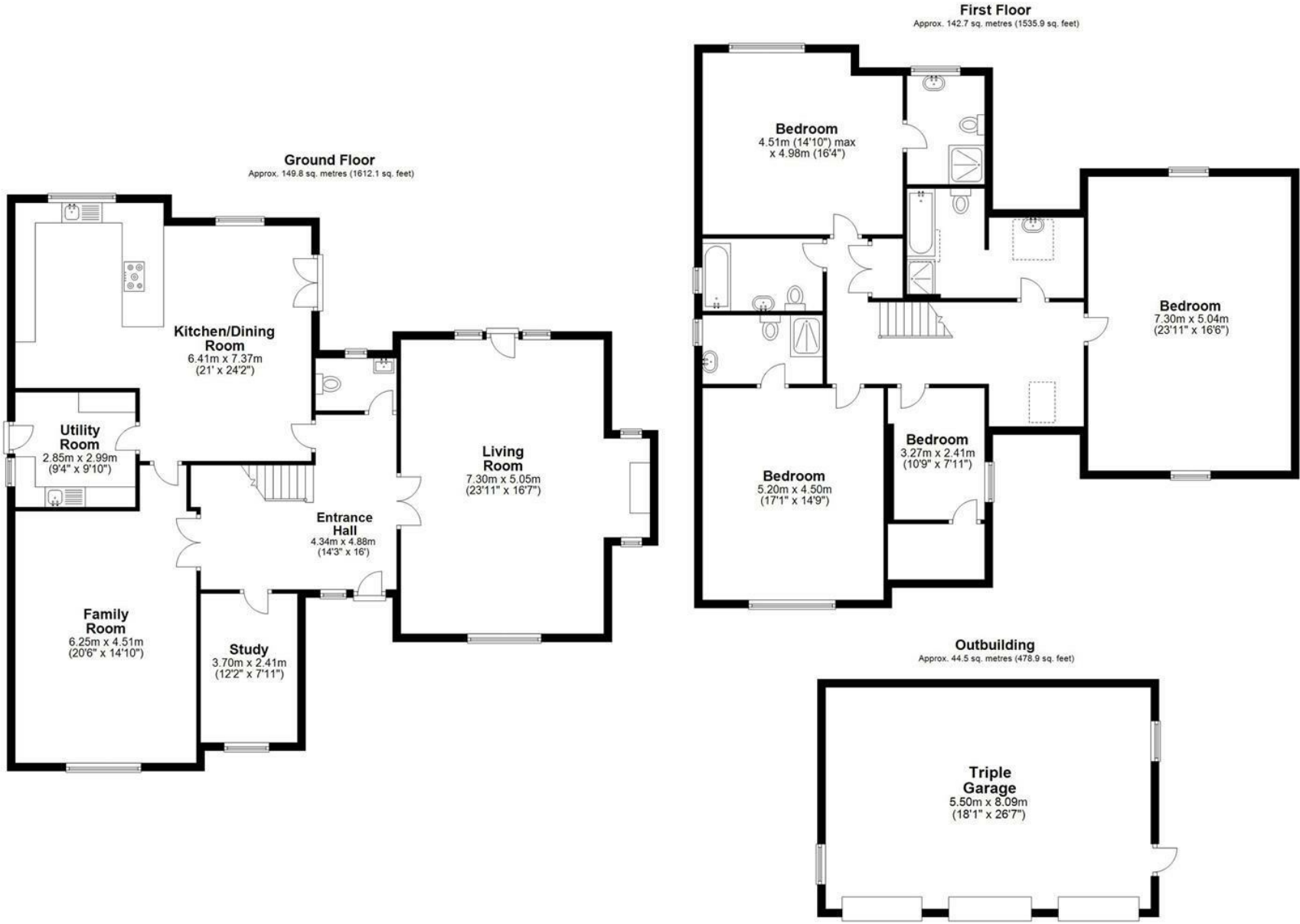
Landing	
Principal Bedroom	23'11" x 16'6"
En-Suite	
Bedroom Two	17'0" x 14'9"
En-Suite	
Bedroom Three	14'9" x 16'4"
En-Suite	
Bedroom Four	10'8" x 7'10"
Family Bathroom	

EXTERIOR

Triple Garage	18'0" x 26'6"
Front Driveway	
Rear Garden	







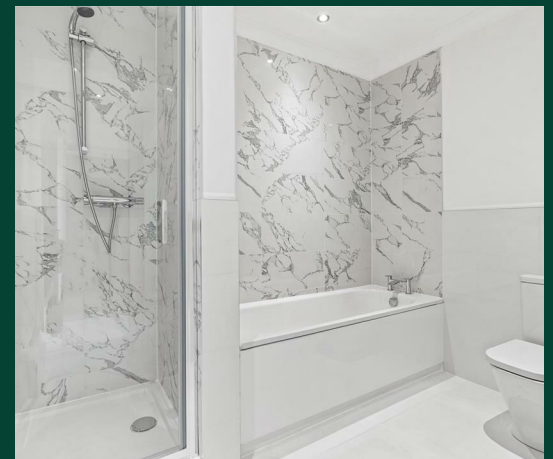
Total area: approx. 337.0 sq. metres (3627.0 sq. feet)

FOR ILLUSTRATIVE PURPOSES ONLY. NOT TO SCALE

Whilst every attempt has been made to ensure the accuracy of the floor plan shown, all measurements, positioning, fixtures, features, fittings and any other data shown are an approximate interpretation for illustrative purposes only and are not to scale. No responsibility is taken for any error, omission, miss-statement or use of data shown.

Energy Efficiency Rating		Current	Potential
Very energy efficient - lower running costs			
(92 plus) A			78
(81-91) B			
(69-80) C			
(55-68) D		65	
(39-54) E			
(21-38) F			
(1-20) G			
Not energy efficient - higher running costs			
England & Wales		EU Directive 2002/91/EC	









Bryan Bishop
and partners

6a High Street | Welwyn | AL6 9EG | 01438 718877 | info@bryanbishop.co.uk | www.bryanbishop.co.uk Find us on

