

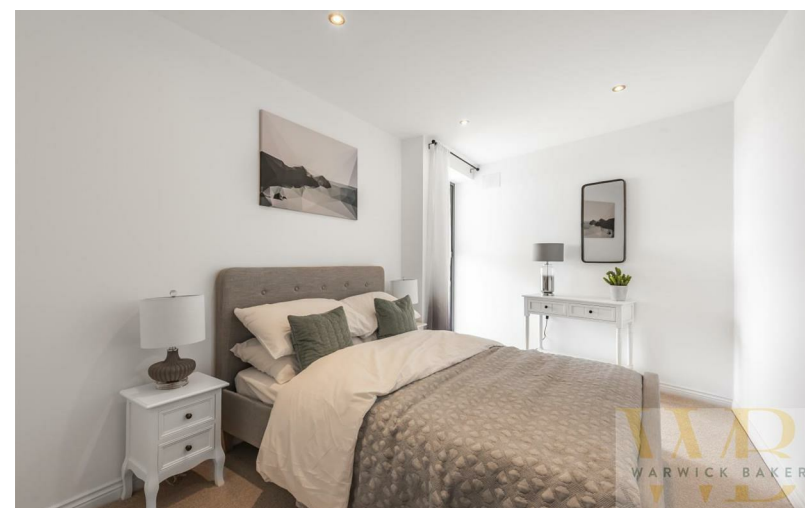


PHASE 3 - WEST TOWER - 68 MARINER POINT Brighton

Doon Lane, Brighton BN1 4QJ

**WB**  
WARWICK BAKER  
ESTATE AGENT





## PHASE 3 - WEST TOWER - 68 MARINER POINT Brighton Road | | Shoreham-

B - 1BN16 6DU

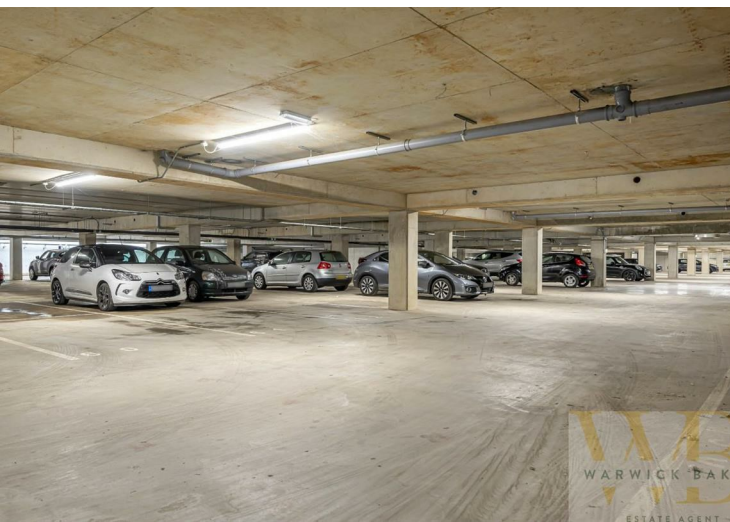
£375,000

PHASE 3 - WEST TOWER - VIEWS OF SHOREHAM, THE RIVER AND FOOTBRIDGE

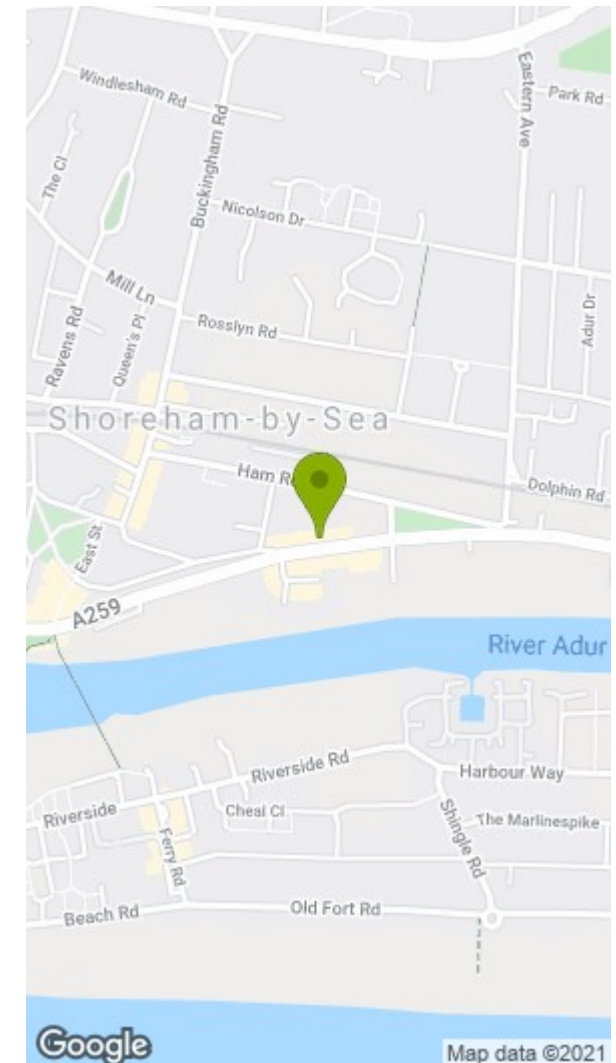
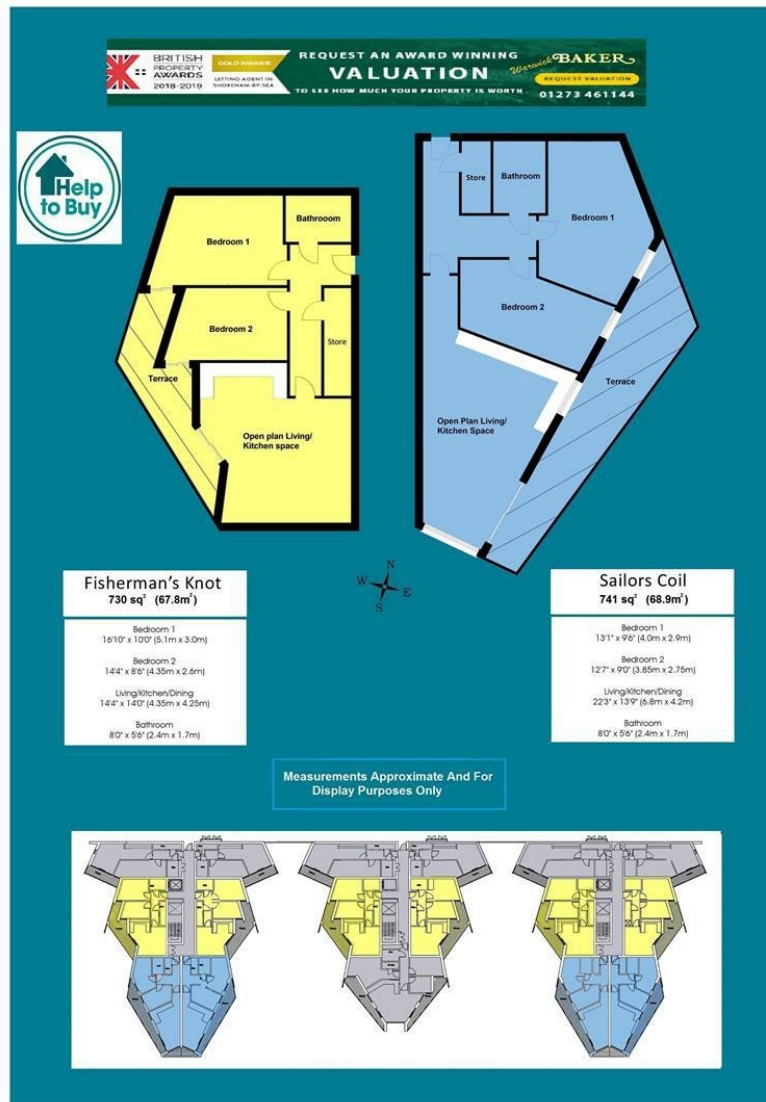
SAILORS COIL 741 SQ FT - 2 BEDROOMS - SIXTH FLOOR - EASTERLY ASPECT

HELP TO BUY SCHEME AVAILABLE - CALL NOW FOR MORE DETAILS 01273 461144

\*\*\* PLEASE NOTE THE PHOTOS ARE OF THE SHOW FLAT AND MAY NOT BE THIS PARTICULAR PLOT \*\*\*







## Disclaimer

\* These particulars are intended to give a fair and substantially correct overall description for the guidance of intending purchasers and do not constitute an offer or part of a contract. Prospective purchasers and/or lessees ought to seek their own independent professional advice.

\* All descriptions, dimensions, areas, references to condition and necessary permissions for use and occupation and other details are given in good faith and are believed to be correct, but any intending purchasers should not rely on them as statements or representations of fact, but must satisfy themselves by inspection or otherwise as to the correctness of each of them.

\* All measurements are approximate

Energy Efficiency Rating		Current	Potential
Very energy efficient - lower running costs			
(92 plus)	A		
(81-91)	B		
(69-80)	C		
(55-68)	D		
(39-54)	E		
(21-38)	F		
(1-20)	G		
Not energy efficient - higher running costs			
England & Wales		EU Directive 2002/91/EC	

Environmental Impact (CO <sub>2</sub> ) Rating		Current	Potential
Very environmentally friendly - lower CO <sub>2</sub> emissions			
(92 plus)	A		
(81-91)	B		
(69-80)	C		
(55-68)	D		
(39-54)	E		
(21-38)	F		
(1-20)	G		
Not environmentally friendly - higher CO <sub>2</sub> emissions			
England & Wales		EU Directive 2002/91/EC	