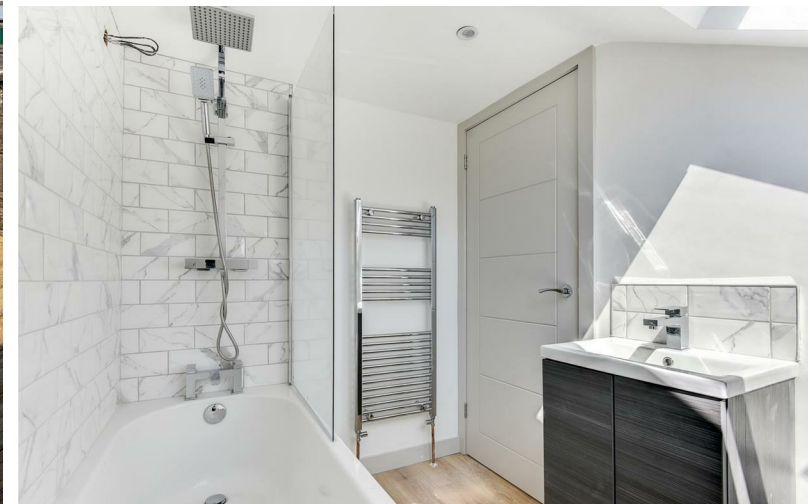




16 Stoney Lane | | Shoreham-By-Sea | BN43 6LA





16 Stoney Lane | | Shoreham-By-Sea | BN43 6LA

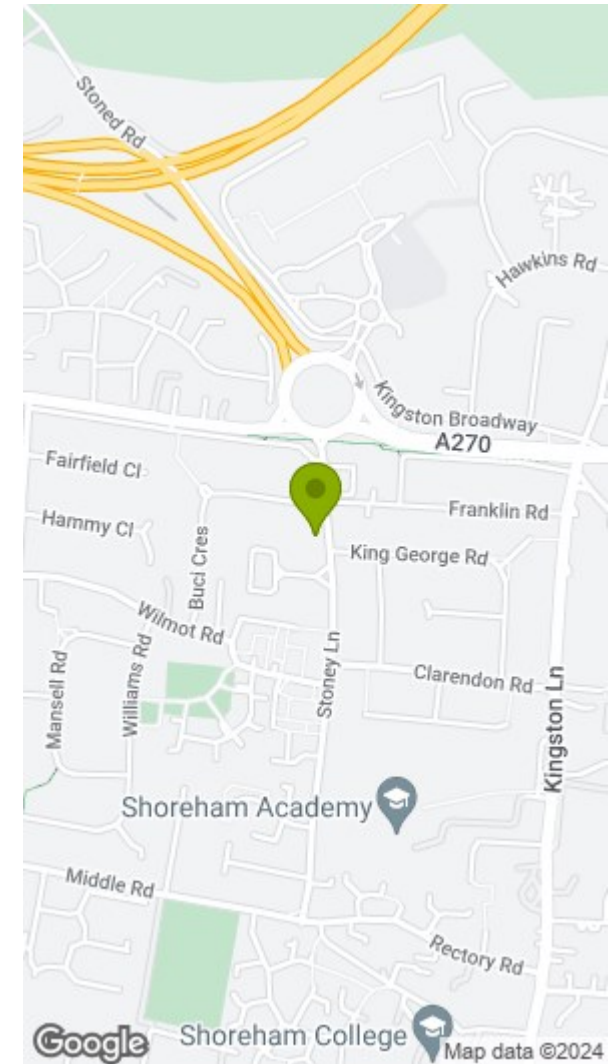
£499,995

\*\*\* PRICE GUIDE £499,995 \*\*\*

WARWICK BAKER ESTATE AGENTS ARE DELIGHTED TO OFFER TO THE MARKET THIS FULLY REFUBISHED SEMI-DETACHED BUNGALOW.

THE CURRENT OWNERS HAVE NOW BENEFITTING FROM 4 BEDROOMS THE BUNGALOW HAS A LARGE L-SHAPED WESTERLY FACING OPEN PLAN LIVING/DINING/ KITCHEN WITH BI-FOLDING DOORS OUT ONTO A LANDSCAPED SECLUDED REAR GARDEN, TWO BEDROOMS AND A CLOAKROOM ON THE GROUND FLOOR.





**Disclaimer**

\* These particulars are intended to give a fair and substantially correct overall description for the guidance of intending purchasers and do not constitute an offer or part of a contract. Prospective purchasers and/or lessees ought to seek their own independent professional advice.

\* All descriptions, dimensions, areas, references to condition and necessary permissions for use and occupation and other details are given in good faith and are believed to be correct, but any intending purchasers should not rely on them as statements or representations of fact, but must satisfy themselves by inspection or otherwise as to the correctness of each of them.

\* All measurements are approximate

Energy Efficiency Rating		Environmental Impact (CO <sub>2</sub> ) Rating			
	Current	Potential		Current	Potential
Very energy efficient - lower running costs			Very environmentally friendly - lower CO <sub>2</sub> emissions		
(92 plus) <b>A</b>			(92 plus) <b>A</b>		
(81-91) <b>B</b>			(81-91) <b>B</b>		
(69-80) <b>C</b>			(69-80) <b>C</b>		
(54-68) <b>D</b>			(54-68) <b>D</b>		
(39-53) <b>E</b>			(39-53) <b>E</b>		
(21-38) <b>F</b>			(21-38) <b>F</b>		
(1-20) <b>G</b>			(1-20) <b>G</b>		
Not energy efficient - higher running costs			Not environmentally friendly - higher CO <sub>2</sub> emissions		
<b>England &amp; Wales</b>	EU Directive 2002/91/EC		<b>England &amp; Wales</b>	EU Directive 2002/91/EC	